

Dane techniczne:

Kubatura:	363 m ³
Powierzchnia zabudowy:	67.2 m ²
Powierzchnia całkowita:	110.8 m ²
Powierzchnia netto:	93.6 m ²
Powierzchnia użytkowa:	89.2 m ²
Wymiary domu:	7 x 9.6 m
Minimalne wymiary działki:	15 x 17.65 m
Wysokość do kalenicy:	7,40 m / 24,70 ft
Powierzchnia dachu:	134 m ²
Kąt nachylenia dachu:	42 degrees

Koszty realizacji:

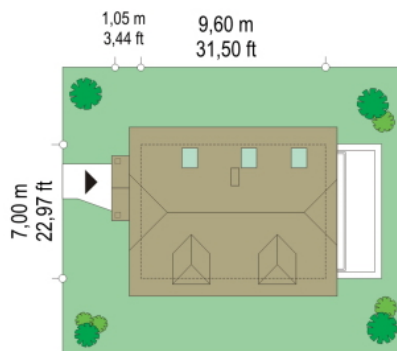
Realizacja stanu surowego otwartego:	24 000
Realizacja stanu surowego zamkniętego:	36 100
Koszt robót wykończeniowych:	41 900
Realizacja domu pod klucz:	78 000

Koszty są podane w cenach netto, należy doliczyć podatek VAT

Materiały:

Materials:

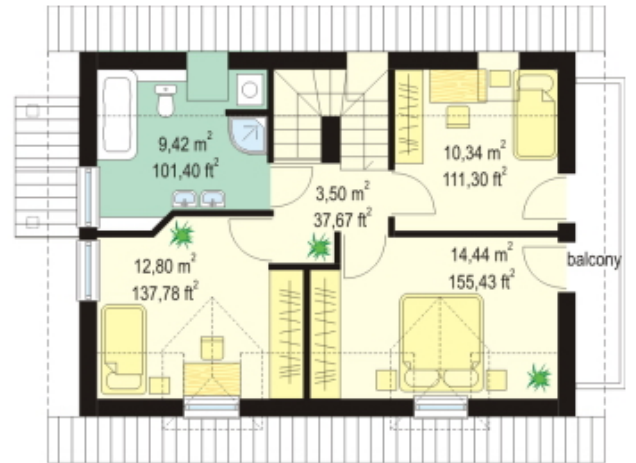
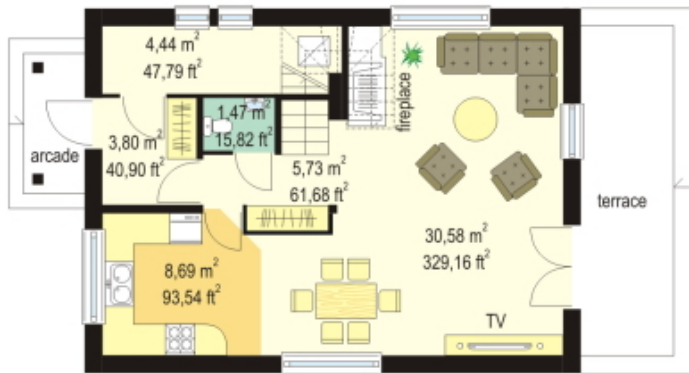
- Foundations - Concrete benches and foundation walls of concrete blocks
- Exterior walls - brick walls - aerated concrete + polystyrene + thin-layer plaster
- Ceiling - reinforced concrete TERIVA
- Elevation - thin-layer plaster on polystyrene
- Roof - metal roofing tile, tile

**CENA PROJEKTU: 830.00 \$**

	Energy-saving package	bezpl.
	Ventilation and fireplace package	90
	Central vacuum package	70
	The electronic version of the project	120
	Solar installation package	70
	Underfloor heating package	80
	Heat pump package	70
	Water jacket package	70
	Boiler for solid fuel package	80
	Air conditioning package	80
	Fencing projects	140
	Septic tanks sealed package	bezpl.

Adam house plan is ideal for a family of four. This house has been design with the pediment roof. The interior is formed with the division on the general, living part with the living room, a private part and a night part with three bedrooms and a bathroom. There is available a mirror version of this house plan. Adam's house plan is available in the variant version with a garage built on the side of the house or with the garage in the front elevation (D03 with garage) - a proposal for a very narrow plot.

Rzuty:



Elewacje:

