

### Dane techniczne:

Kubatura:	1412 m <sup>3</sup>
Powierzchnia zabudowy:	205.54 m <sup>2</sup>
Powierzchnia całkowita:	487.81 m <sup>2</sup>
Powierzchnia netto:	328.61 m <sup>2</sup>
Powierzchnia użytkowa:	276.54 m <sup>2</sup>
Wymiary domu:	13.56 x 16.38 m
Minimalne wymiary działki:	26.45 x 24.38 m
Wysokość do kalenicy:	8,46 m / 27,75 ft
Powierzchnia dachu:	288 m <sup>2</sup>
Kąt nachylenia dachu:	35 degrees

### Koszty realizacji:

Realizacja stanu surowego otwartego:	79 000
Realizacja stanu surowego zamkniętego:	109 000
Koszt robót wykończeniowych:	113 400
Realizacja domu pod klucz:	222 400

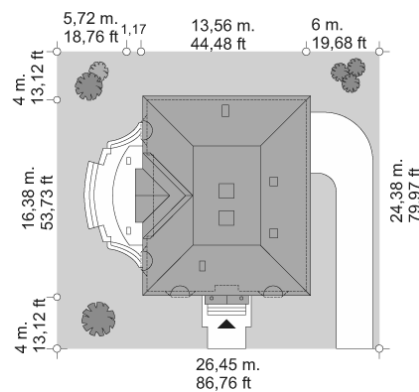
Koszty są podane w cenach netto, należy doliczyć podatek VAT

### Materiały:

- Foundations - Concrete benches, walls of concrete blocks
- External walls - bilayer porothermu
- Ceiling - Teriva
- Elevation - thin-layer plaster
- Roof - ceramic tile or tar roofing



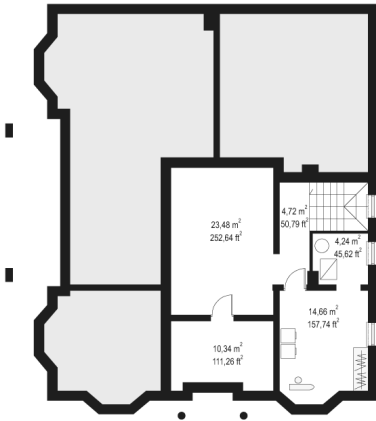
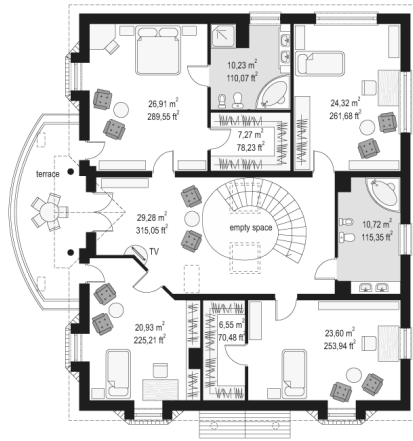
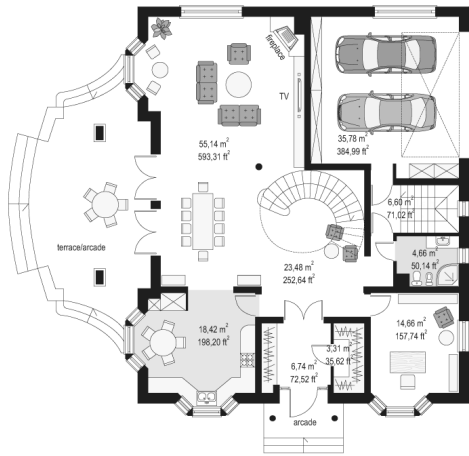
## CENA PROJEKTU: 1350.00 \$



	Energy-saving package	bezpł.
	Ventilation and fireplace package	90
	Central vacuum package	70
	The electronic version of the project	120
	Solar installation package	70
	Underfloor heating package	80
	Heat pump package	70
	Water jacket package	70
	Boiler for solid fuel package	80
	Air conditioning package	80
	Fencing projects	140
	Septic tanks sealed package	bezpł.

Ambassador 2 house plan is a representative, big house perfect for a plot with a garden located on the side. Front elevation of the house was designed as a symmetrical, with bay windows on the sides an interesting entrance portico. In this house plan a garage has been placed in the back part of the house in order not to disturb with the mood of the villa. Garden elevation was decorated with bay windows and an elegant terrace with balusters on the floor, creating at the same time a large arcade available from the living room on the ground floor. The interior of the house is a large room, additionally connecting spatially hall with a classic stair and high lobby-gallery on the first floor with skylights in the roof. The space designed in this way creates an elegant, comfortable place to live. Ambassador 2 house plan has a partial basement. Ambassador 2 house plan is also available in a mirror version.

Rzuty:



Elewacje:





MG Projekt Pracownia Architektoniczna s.c. ul. Uczniowska 14 03-112 Warszawa  
tel.: 22 676 66 83, 22 676 66 88, fax: 22 676 66 82, mob.: 600 392 884,  
tylko przedstawiciele 606 200 136, [www.mgprojekt.com.pl](http://www.mgprojekt.com.pl),  
[mgprojekt@mgprojekt.com.pl](mailto:mgprojekt@mgprojekt.com.pl)

MG Projekt