

Dane techniczne:

Kubatura:	627 m ³
Powierzchnia zabudowy:	129.26 m ²
Powierzchnia całkowita:	210.93 m ²
Powierzchnia netto:	146.99 m ²
Powierzchnia użytkowa:	130.96 m ²
Wymiary domu:	14.46 x 10.81 m
Minimalne wymiary działki:	21.93 x 18.96 m
Wysokość do kalenicy:	8,39 m / 27,52 ft
Powierzchnia dachu:	219.38 m ²
Kąt nachylenia dachu:	40 degrees

Koszty realizacji:

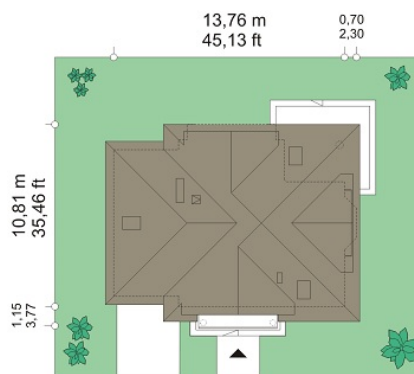
Realizacja stanu surowego otwartego:	43 700
Realizacja stanu surowego zamkniętego:	66 700
Koszt robót wykończeniowych:	59 300
Realizacja domu pod klucz:	126 000

Koszty są podane w cenach netto, należy doliczyć podatek VAT

Materiały:

- Foundations - concrete benches and foundation walls with concrete blocks
- Exterior walls - brick walls - airbricks porotherm 25 + polystyrene + plaster thin
- Ceiling - TERIVA
- Elevation - thin-layer plaster on polystyrene
- Roof - tile

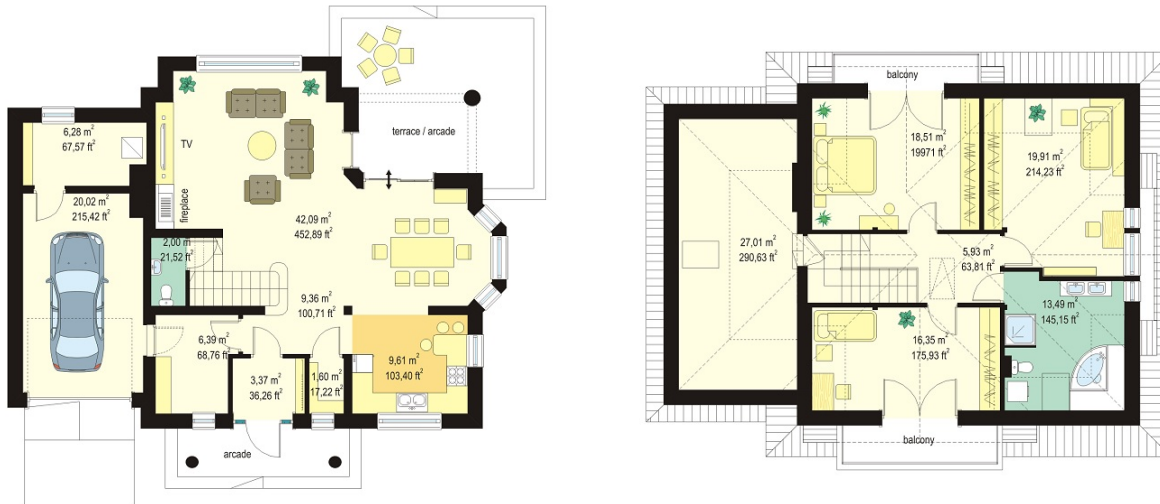
C

CENA PROJEKTU: 1110.00 \$

	Energy-saving package	bezpł.
	Ventilation and fireplace package	90
	Central vacuum package	70
	The electronic version of the project	120
	Solar installation package	70
	Underfloor heating package	80
	Heat pump package	70
	Water jacket package	70
	Boiler for solid fuel package	80
	Air conditioning package	80
	Fencing projects	140
	Septic tanks sealed package	bezpł.

Julka 2 house plan is a reduced version of the Julka house plan - with a single garage and a smaller attic above the garage. House is an ideal proposition for the family of four to five people who dreams of your own four walls. The house plan was created on a square plan, with an extension garage. The ground floor and an attic covers the envelope roof, whose diversion are dormers with balconies. Exterior house architecture is a traditional Polish "dachshund", with interestingly matched windows and patio doors, bay windows and decorative garden arcades, allowing staying on the terrace in bad weather. Entrance to the house highlights two columns, which support a front dormers balcony. Inside the house is designed with division into a living part on the ground floor and night part - an intimate with bedrooms on the attic. Most of the ground floor area takes spacious - as on the scale of a house - living part with living room, dining room, foyer and semi-open kitchen. Stairs are a decorative element of the interior. The remaining space is a garage and utility rooms. It is possible to adapt a room at the entrance to the room for example for an office room (eliminating the connection to the garage). In the attic there is space for three comfortable bedrooms - each with its own large dormers, and a bathroom. Additionally, you can adapt the attic for extra room. Julka 2 is also available in a mirror version.

Rzuty:



Elewacje:

