

Dane techniczne:

Kubatura:	443 m ³
Powierzchnia zabudowy:	89.19 m ²
Powierzchnia całkowita:	131.48 m ²
Powierzchnia netto:	69.14 m ²
Powierzchnia użytkowa:	65.77 m ²
Wymiary domu:	10.24 x 8.71 m
Minimalne wymiary działki:	18.24 x 17.21 m
Wysokość do kalenicy:	6,70 m / 21,98 ft
Powierzchnia dachu:	142.67 m ²
Kąt nachylenia dachu:	33 degrees

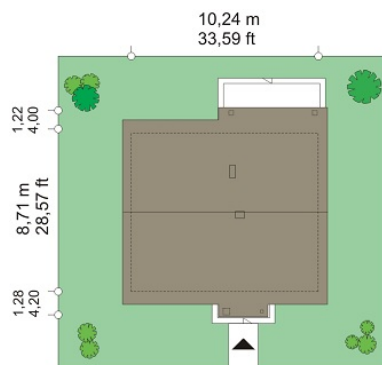
Koszty realizacji:

Realizacja stanu surowego otwartego:	26 800
Realizacja stanu surowego zamkniętego:	37 900
Koszt robót wykończeniowych:	43 600
Realizacja domu pod klucz:	81 400

Koszty są podane w cenach netto, należy doliczyć podatek VAT

Materiały:

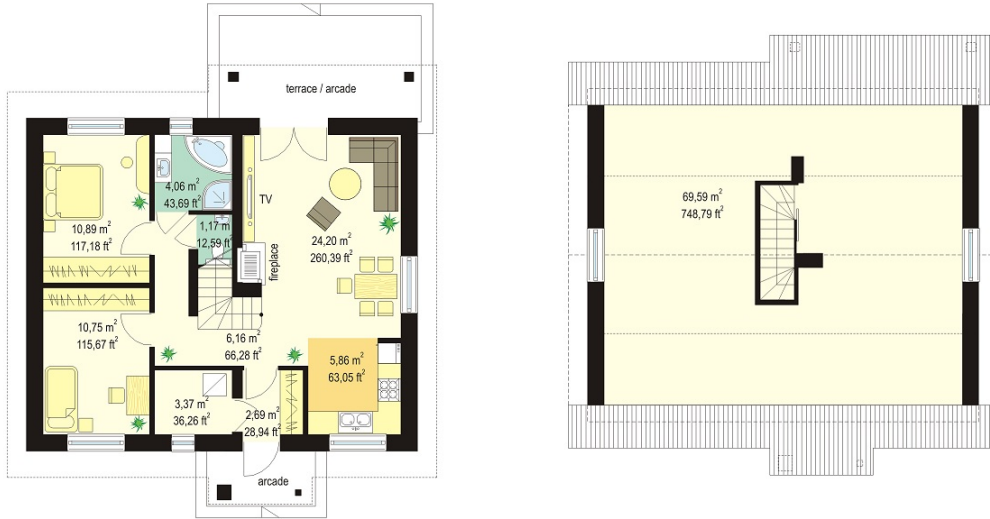
- Foundations - concrete benches and foundation walls with concrete blocks
- Exterior walls - brick walls - airbricks porotherm 25 + polystyrene + plaster thin
- Ceiling - TERIVA
- Elevation - thin-layer plaster on polystyrene
- Roof - tile

**CENA PROJEKTU: 870.00 \$**

	Energy-saving package	bezpł.
	Ventilation and fireplace package	90
	Central vacuum package	70
	The electronic version of the project	120
	Solar installation package	70
	Underfloor heating package	80
	Heat pump package	70
	Water jacket package	70
	Boiler for solid fuel package	80
	Air conditioning package	80
	Fencing projects	140
	Septic tanks sealed package	bezpł.

Kajtek house plan is a small house for a family of three - four people. This is one-storey building, covered by a gable roof. A simple shape of house combined with modern details and the materials used create a successful whole. Kajtek has unpretentious and original look. The interior of houses consist of a comfortable three-room apartment, with a living room, semi-open kitchen, two bedrooms, bathroom and boiler room accessible from the porch. Up the stairs you get to the attic, which - in house plan is treated as nonuse - very easily can be adapted to loft with additional rooms. In this house plan used separation the living part from the night part - with the bedrooms. In the living room the central element is a fireplace and stairs which adorning the interior. Wide balcony doors open the view on the partially covered terrace and a garden. There is also available a mirror version of this house plan.

Rzuty:



Elewacje:

