

## Dane techniczne:

Kubatura:	821 m <sup>3</sup>
Powierzchnia zabudowy:	152.23 m <sup>2</sup>
Powierzchnia całkowita:	295.4 m <sup>2</sup>
Powierzchnia netto:	247.43 m <sup>2</sup>
Powierzchnia użytkowa:	228.82 m <sup>2</sup>
Wymiary domu:	11 x 15.76 m
Minimalne wymiary działki:	19 x 23.76 m
Wysokość do kalenicy:	8,44 m / 27,68 ft
Powierzchnia dachu:	208 m <sup>2</sup>
Kąt nachylenia dachu:	35 degrees

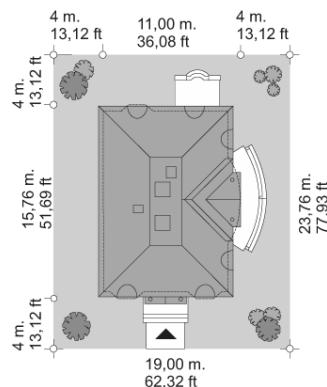
## Koszty realizacji:

Realizacja stanu surowego otwartego:	56 500
Realizacja stanu surowego zamkniętego:	80 900
Koszt robót wykończeniowych:	79 300
Realizacja domu pod klucz:	160 200

Koszty są podane w cenach netto, należy doliczyć podatek VAT

## Materiały:

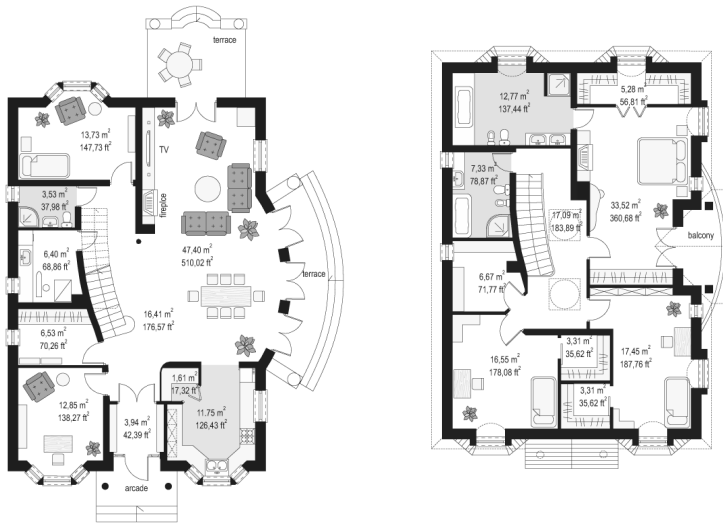
- Foundations - concrete benches, walls made of concrete blocks
- External walls - bilayer porotherm + wool
- Internal walls - porotherm
- Ceiling - monolithic reinforced concrete
- Elevation - thin-layer plaster
- Roof - tile

**CENA PROJEKTU: 1250.00 \$**

	Energy-saving package	bezpł.
	Ventilation and fireplace package	90
	Central vacuum package	70
	The electronic version of the project	120
	Solar installation package	70
	Underfloor heating package	80
	Heat pump package	70
	Water jacket package	70
	Boiler for solid fuel package	80
	Air conditioning package	80
	Fencing projects	140
	Septic tanks sealed package	bezpł.

Ambassador 3 house plan is a large detached house for the family of 4 to 6 people. This house plan has a classic architecture with interesting details of the facade. The house fits both to the plot with a garden located on the back and side. The interior of the house was divided on the living area on the ground floor and bedrooms on the top floor. Ambassador 3 house plan exists in two versions: with the planned garage on the ground floor and with no garage but with an extra room. There is also a mirror version of the this house plan.

## Rzuty:



## Elewacje:

