

Dane techniczne:

Kubatura:	843 m ³
Powierzchnia zabudowy:	236.74 m ²
Powierzchnia całkowita:	236.74 m ²
Powierzchnia netto:	202.45 m ²
Powierzchnia użytkowa:	165 m ²
Wymiary domu:	17.84 x 19.54 m
Minimalne wymiary działki:	24.84 x 27.54 m
Wysokość do kalenicy:	5,24 m (5,56 m with foundation)
Powierzchnia dachu:	323.1 m ²
Kąt nachylenia dachu:	24 degrees

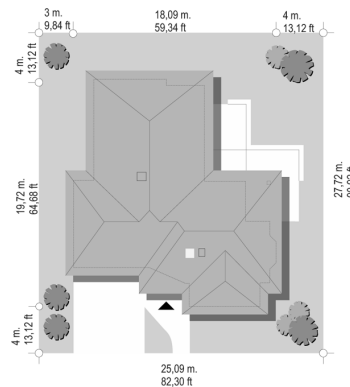
Koszty realizacji:

Realizacja stanu surowego otwartego:	43 000
Realizacja stanu surowego zamkniętego:	71 100
Koszt robót wykończeniowych:	79 200
Realizacja domu pod klucz:	150 300

Koszty są podane w cenach netto, należy doliczyć podatek VAT

Materiały:

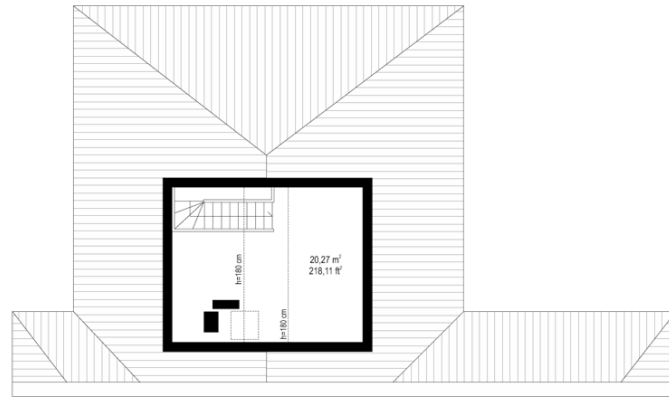
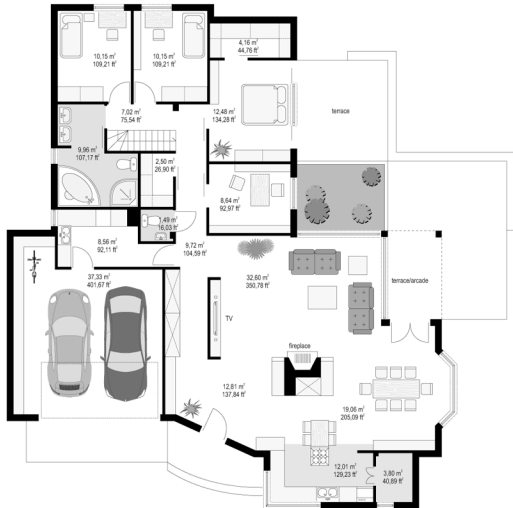
- Foundations - reinforced concrete
- External walls - bilayer: aerated concrete + polystyrene or ceramic airbricks + polystyrene
- Ceiling - construction of wooden roof truss
- Elevations - thin-layer plaster
- Roof - ceramic tile

**CENA PROJEKTU: 1110.00 \$**

	Energy-saving package	bezpł.
	Ventilation and fireplace package	90
	Central vacuum package	70
	The electronic version of the project	120
	Solar installation package	70
	Underfloor heating package	80
	Heat pump package	70
	Water jacket package	70
	Boiler for solid fuel package	80
	Air conditioning package	80
	Fencing projects	140
	Septic tanks sealed package	bezpł.

Comfortable house plan is a large, extensive house for a family of 4 to 6 people. It was designed for people who love contact with the plot, for people who don't like running up the stairs. This house has a ground floor with an extensive application program, consisting of a living area, private part with a bedrooms and utility part with a double garage. The house has an attractive appearance from all sides. Despite a large surface area by fragmentation of solids it does not create the impression of a very large from the outside. There is a possibility of partial development of an attic, and increasing in the ceiling above the living room. We also have this house plan in a mirror version.

Rzuty:



Elewacje:

