

Dane techniczne:

Kubatura:	915 m ³
Powierzchnia zabudowy:	279.07 m ²
Powierzchnia całkowita:	347.31 m ²
Powierzchnia netto:	236.29 m ²
Powierzchnia użytkowa:	202.11 m ²
Wymiary domu:	18.09 x 21.92 m
Minimalne wymiary działki:	26.09 x 29.92 m
Wysokość do kalenicy:	6,64 m / 21,78 ft
Powierzchnia dachu:	383.8 m ²
Kąt nachylenia dachu:	30 degrees

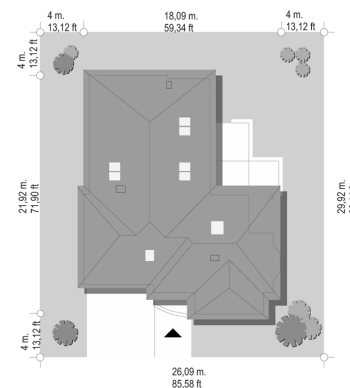
Koszty realizacji:

Realizacja stanu surowego otwartego:	61 600
Realizacja stanu surowego zamkniętego:	95 800
Koszt robót wykończeniowych:	86 400
Realizacja domu pod klucz:	182 100

Koszty są podane w cenach netto, należy doliczyć podatek VAT

Materiały:

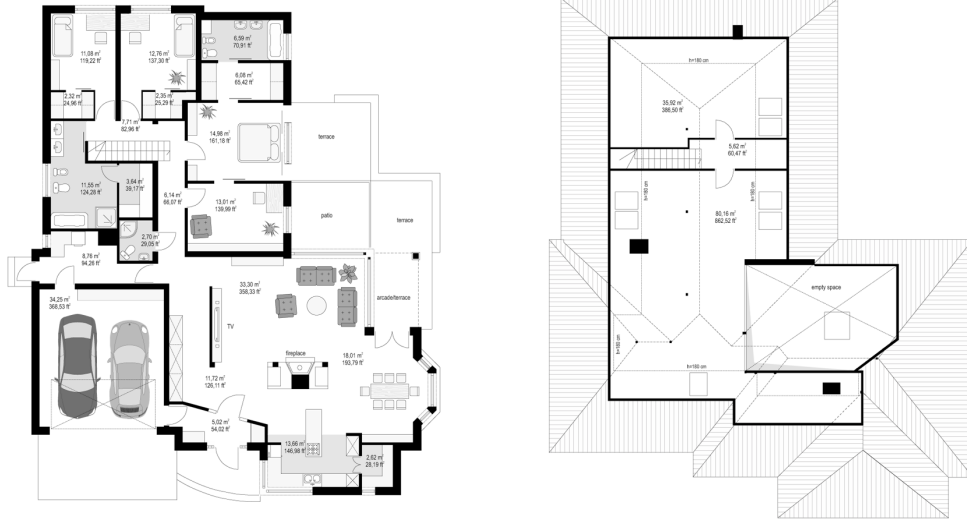
- Foundations - concrete
- Walls - bilayer: aerated concrete + polystyrene or mineral wool
- Ceiling - Teriva
- Roof - ceramic tile

**CENA PROJEKTU: 1180.00 \$**

	Energy-saving package	bezpł.
	Ventilation and fireplace package	90
	Central vacuum package	70
	The electronic version of the project	120
	Solar installation package	70
	Underfloor heating package	80
	Heat pump package	70
	Water jacket package	70
	Boiler for solid fuel package	80
	Air conditioning package	80
	Fencing projects	140
	Septic tanks sealed package	bezpł.

This house plan is an enlarged version of the house Comfortable. But it has a more extensive plan of a ground floor and a large attic that can be used as an usable attic. The building consists of two parts: a day - with a hall, living room, dining room and kitchen - forming undivided whole, and a night part - with parents' bedroom, office, two children's bedrooms and a bath room. Each bedroom has its own dressing room, master bedroom has a private bathroom. Some part of the house is separated by a garage and storage rooms. Attic can be adapted for additional rooms. A house is designed on L-shaped - so that terraces, glazed and arcade formed an interior patio. Comfortable 2 is a large, spacious house, which will provide the perfect place to live for 4-5 person family. We also have this house plan in a mirror version.

Rzuty:



Elewacje:

