

## Dane techniczne:

Kubatura:	868 m <sup>3</sup>
Powierzchnia zabudowy:	216.38 m <sup>2</sup>
Powierzchnia całkowita:	260.44 m <sup>2</sup>
Powierzchnia netto:	140.39 m <sup>2</sup>
Powierzchnia użytkowa:	134.81 m <sup>2</sup>
Wymiary domu:	16.66 x 17.75 m
Minimalne wymiary działki:	23.66 x 25.75 m
Wysokość do kalenicy:	6,45 m / 21,16 ft
Powierzchnia dachu:	323.06 m <sup>2</sup>
Kąt nachylenia dachu:	30 degrees

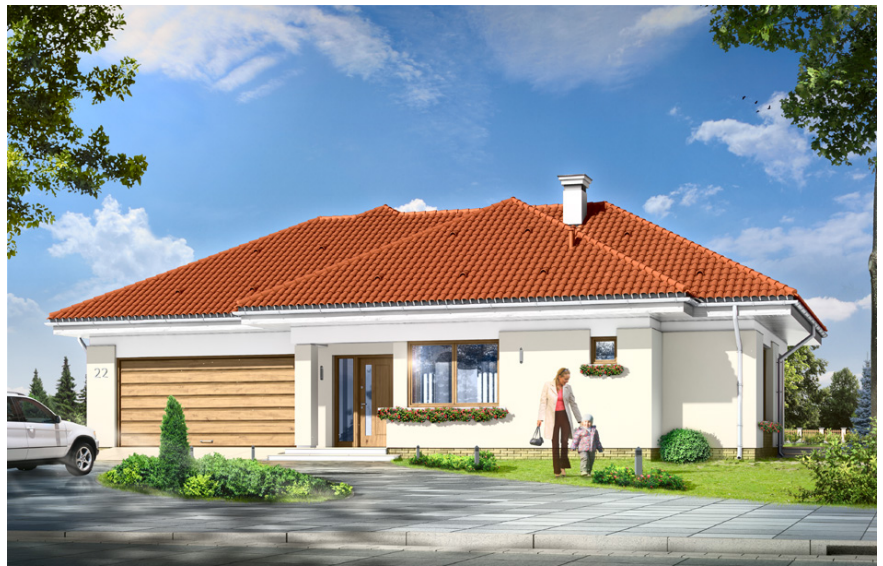
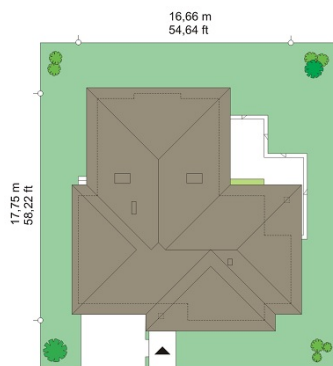
## Koszty realizacji:

Realizacja stanu surowego otwartego:	52 000
Realizacja stanu surowego zamkniętego:	86 600
Koszt robót wykończeniowych:	62 300
Realizacja domu pod klucz:	148 900

Koszty są podane w cenach netto, należy doliczyć podatek VAT

## Materiały:

- Foundations: concrete benches and foundation walls with concrete blocks
- External walls: brick walls - airbricks porotherm 25 + polystyrene + thin-layer plaster
- Ceiling: Teriva
- Elevations: thin-layer plaster on polystyrene
- Roofing: tile

**CENA PROJEKTU: 1070.00 \$**

	Energy-saving package	bezpł.
	Ventilation and fireplace package	90
	Central vacuum package	70
	The electronic version of the project	120
	Solar installation package	70
	Underfloor heating package	80
	Heat pump package	70
	Water jacket package	70
	Boiler for solid fuel package	80
	Air conditioning package	80
	Fencing projects	140
	Septic tanks sealed package	bezpł.

Comfortable 3 house plan is a single family house is for a 4 to 5 people. This is a one-storey building, covered by a hipped roof with the attic, which can be adapted for usable attic. The house is a smaller version of the popular house plan Comfortable. Exterior appearance of house combines modern and traditional elements. The traditional tiled roof combined with low-storey walls, with lots of glazing and corner floor-length windows, create successful combination. The house blends into the surrounding garden and retains a human scale. From all the rooms there is a direct view and contact with the garden. Because the house is a bungalow - all rooms are on one level, giving unparalleled ease for residents. The interior is divided into a day part - a living room, and the night part - with the bedrooms. In addition, the utility space was also isolated, with two cars garage and boiler room - accessible from the atrium. The living room, with a centrally located fireplace, and a beautiful corner glazing - with the opening to the garden, combined with the dining room, hall and kitchen, create a huge living space for your use. An additional decoration are undoubtedly the stairs to the attic. The attic can be closed as no usable, or adapt as an extra studio with the void above the living room. In the night part there are three bedrooms, master bedroom with its own dressing room and terrace, a large bathroom and an extra room - e.g. office. We also have this house plan in a mirror version.

