

## Dane techniczne:

Kubatura:	1252 m <sup>3</sup>
Powierzchnia zabudowy:	231.85 m <sup>2</sup>
Powierzchnia całkowita:	415.8 m <sup>2</sup>
Powierzchnia netto:	309.06 m <sup>2</sup>
Powierzchnia użytkowa:	291.76 m <sup>2</sup>
Wymiary domu:	16.72 x 16.15 m
Minimalne wymiary działki:	20.72 x 24.54 m
Wysokość do kalenicy:	9,38 m / 30,77 ft
Powierzchnia dachu:	284.88 m <sup>2</sup>
Kąt nachylenia dachu:	30 i 33 degrees

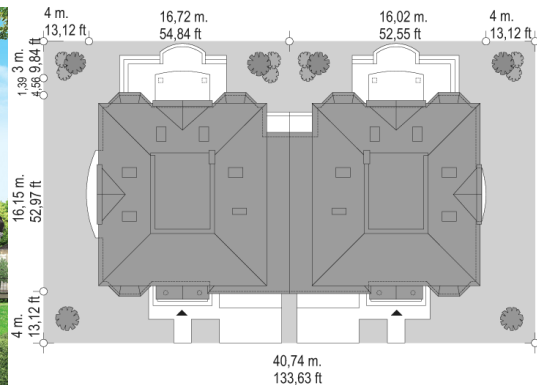
## Koszty realizacji:

Realizacja stanu surowego otwartego:	84 600
Realizacja stanu surowego zamkniętego:	117 800
Koszt robót wykończeniowych:	105 700
Realizacja domu pod klucz:	223 500

Koszty są podane w cenach netto, należy doliczyć podatek VAT

## Materiały:

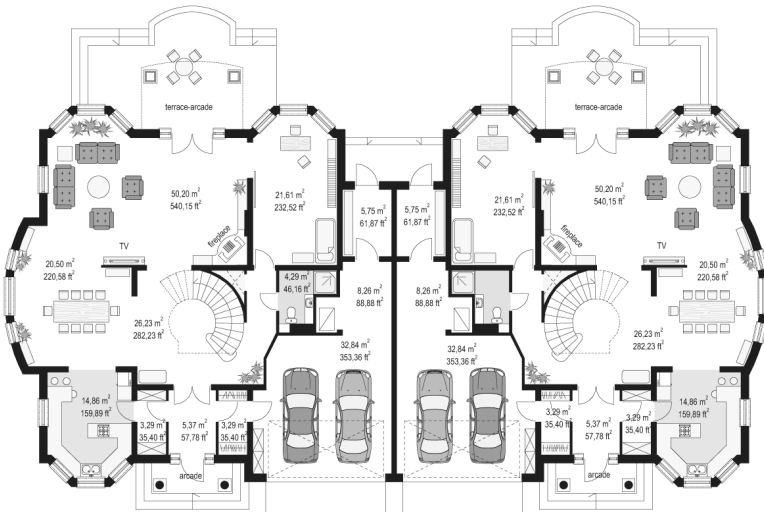
- Foundations - poured concrete
- External walls - bilayer wall blocks Optiroc 24 + 12 polystyrene (or mineral wool)
- Ceiling - reinforced concrete TERIVA
- Roof - tile and tar roofing
- Elevation - thin-layer plaster

**CENA PROJEKTU: 1900.00 \$**

	Energy-saving package	bezpł.
	Ventilation and fireplace package	90
	Central vacuum package	70
	The electronic version of the project	120
	Solar installation package	70
	Underfloor heating package	80
	Heat pump package	70
	Water jacket package	70
	Boiler for solid fuel package	80
	Air conditioning package	80
	Fencing projects	140
	Septic tanks sealed package	bezpł.

Comoros house plan is a rare combination of classical residential architecture with a form of a twin building. Comoros house is modeled on the urban villas of the interwar period, and partly also on US residences for the upper middle class. Storeyed block of each half is built on a plan similar to the square. Houses are connected by garages. Bay windows, balconies, columns, entrance pediment with columns and a garden terrace - all these elements adorn the block of house and create a harmonious whole. The interior of the house is designed around a central hall with beautiful staircase and open a spatial ceiling. On the ground floor there is a spacious living room, dining room and kitchen, plus office - library, which could also be a guest bedroom. In the economic part of the locker room available at the porch is a convenient garage for two cars and two utility room. On the ground floor a parents suite with dressing room and private terrace overlooking the garden, and three bedrooms with en-suite from the lobby. The lobby was enlarged by the evening annex - also with a terrace. If necessary, from the lobby, you can save an extra room.

## Rzuty:



## Elewacje:



MG Projekt Pracownia Architektoniczna s.c. ul. Uczniowska 14 03-112 Warszawa  
 tel.: 22 676 66 83, 22 676 66 88, fax: 22 676 66 82, mob.: 600 392 884,  
 tylko przedstawiciele 606 200 136, [www.mgprojekt.com.pl](http://www.mgprojekt.com.pl),  
[mgprojekt@mgprojekt.com.pl](mailto:mgprojekt@mgprojekt.com.pl)

MG Projekt