

Dane techniczne:

Kubatura:	331 m ³
Powierzchnia zabudowy:	102.08 m ²
Powierzchnia całkowita:	102.08 m ²
Powierzchnia netto:	84.03 m ²
Powierzchnia użytkowa:	81.49 m ²
Wymiary domu:	12.24 x 8.34 m
Minimalne wymiary działki:	20.24 x 16.67 m
Wysokość do kalenicy:	5,08 m / 16,66 ft
Powierzchnia dachu:	148.19 m ²
Kąt nachylenia dachu:	24 degrees

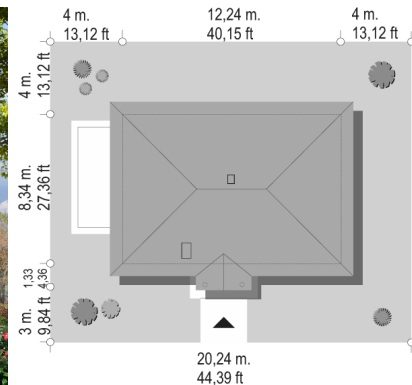
Koszty realizacji:

Realizacja stanu surowego otwartego:	17 200
Realizacja stanu surowego zamkniętego:	28 100
Koszt robót wykończeniowych:	36 600
Realizacja domu pod klucz:	64 700

Koszty są podane w cenach netto, należy doliczyć podatek VAT

Materiały:

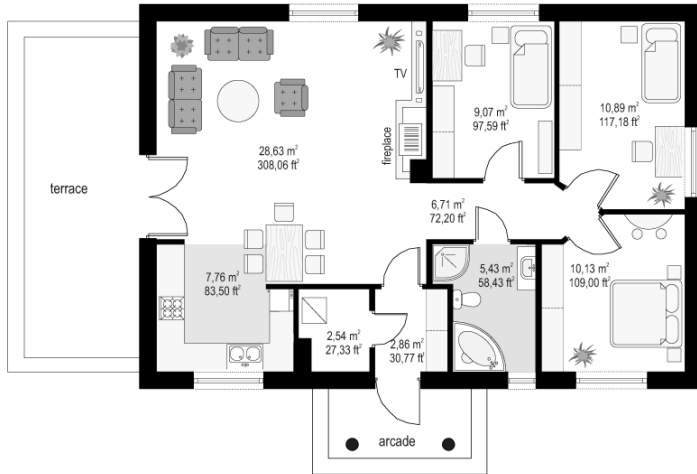
- Foundations - concrete bench and foundation walls with concrete blocks
- External walls - brick walls - aerated concrete blocks 24 + polystyrene + thin-layer plaster
- Ceiling - wooden truss
- Elevation - thin-layer plaster on polystyrene
- Roof - tile

**CENA PROJEKTU: 870.00 \$**

	Energy-saving package	bezpł.
	Ventilation and fireplace package	90
	Central vacuum package	70
	The electronic version of the project	120
	Solar installation package	70
	Underfloor heating package	80
	Heat pump package	70
	Water jacket package	70
	Boiler for solid fuel package	80
	Air conditioning package	80
	Fencing projects	140
	Septic tanks sealed package	bezpł.

Dot house plan is a small family house for a family of four. It is bungalow, built on a rectangular plan, covered by a hipped roof. The front of the house adorns entrance porch supported by two columns. External appearance refers to the architecture of Polish manor house, but in the modern sense. This house plan was designed to plot with a garden on the side - exit by the balcony door from the living room and terrace are from the side elevation. Inside the house is a spacious living room, with a partially open kitchen, three bedrooms, bathroom and utility room - boiler room accessible from the entrance vestibule. On a small area we managed to design a comfortable four-room apartment with a technical background. Walls inside can be freely adjusted - neither of is a construction wall. The construction of the roof was designed with wooden trusses. Dot house plan is also available in mirror image.

Rzuty:



Elewacje:

