

Dane techniczne:

Kubatura:	259 m ³
Powierzchnia zabudowy:	74.28 m ²
Powierzchnia całkowita:	85.29 m ²
Powierzchnia netto:	70.11 m ²
Powierzchnia użytkowa:	65.68 m ²
Wymiary domu:	8.78 x 8.46 m
Minimalne wymiary działki:	16.78 x 18.88 m
Wysokość do kalenicy:	5,9 m / 19,35 ft
Powierzchnia dachu:	155.89 m ²
Kąt nachylenia dachu:	30 degrees

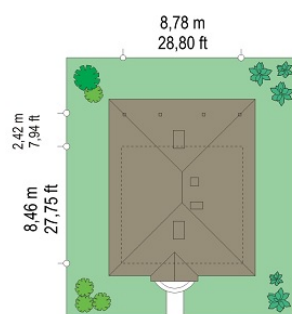
Koszty realizacji:

Realizacja stanu surowego otwartego:	21 600
Realizacja stanu surowego zamkniętego:	33 700
Koszt robót wykończeniowych:	40 600
Realizacja domu pod klucz:	74 200

Koszty są podane w cenach netto, należy doliczyć podatek VAT

Materiały:

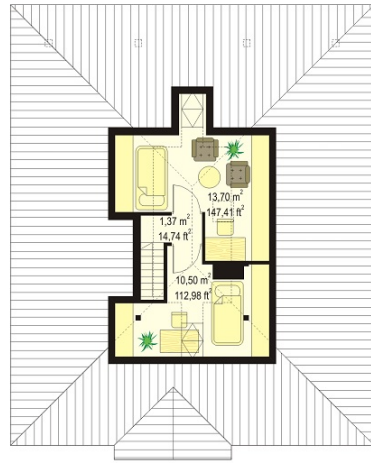
- Foundations - concrete benches, and foundation walls made of concrete blocks
- External walls - brick walls - aerated concrete + polystyrene + thin-layer plaster
- Internal walls - aerated concrete
- Ceiling - wood
- Elevation - thin-layer plaster
- Roof - metal roofing tile or tile

**CENA PROJEKTU: 830.00 \$**

	Energy-saving package	bezpł.
	Ventilation and fireplace package	90
	Central vacuum package	70
	The electronic version of the project	120
	Air conditioning package	80
	Fencing projects	140
	Septic tanks sealed package	bezpł.

Ambrosia house plan is a house for family of 3-4 people, which could serve both as a year-round house and summer house. The interior of the house was formed with the division into a general, living part - the living room with a private part, the night part with two bedrooms and a bathroom on the ground floor and two rooms on the top floor that could serve as a bedroom. There is a version of the Ambrosia with the boiler in the utility room, a variant with a garage on the side of the house, the version in the technology of the wood frame and the mirror version of the house plan.

Rzuty:



Elewacje:

