

Dane techniczne:

Kubatura:	880.8 m ³
Powierzchnia zabudowy:	193.3 m ²
Powierzchnia całkowita:	315.3 m ²
Powierzchnia netto:	242.38 m ²
Powierzchnia użytkowa:	227.64 m ²
Wymiary domu:	17.98 x 14.96 m
Minimalne wymiary działki:	25.98 x 22.96 m
Wysokość do kalenicy:	8,06 m / 26,44 ft
Powierzchnia dachu:	335 m ²
Kąt nachylenia dachu:	35, 36 i 40 degrees

Koszty realizacji:

Realizacja stanu surowego otwartego:	55 000
Realizacja stanu surowego zamkniętego:	84 500
Koszt robót wykończeniowych:	80 600
Realizacja domu pod klucz:	165 100

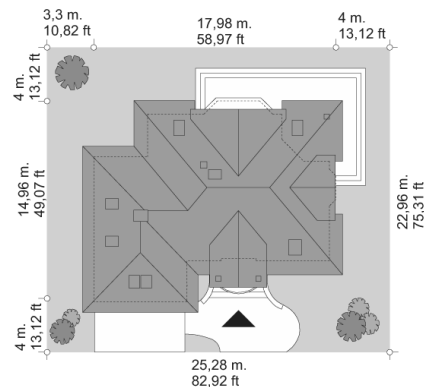
Koszty są podane w cenach netto, należy doliczyć podatek VAT

Materiały:

- Foundations - concrete bench and foundation walls with concrete blocks
- External walls - brick walls -porotherm 25 blocks + polystyrene + thin-layer plaster
- Ceiling - Teriva
- Elevation - thin-layer plaster on polystyrene
- Roof - tile



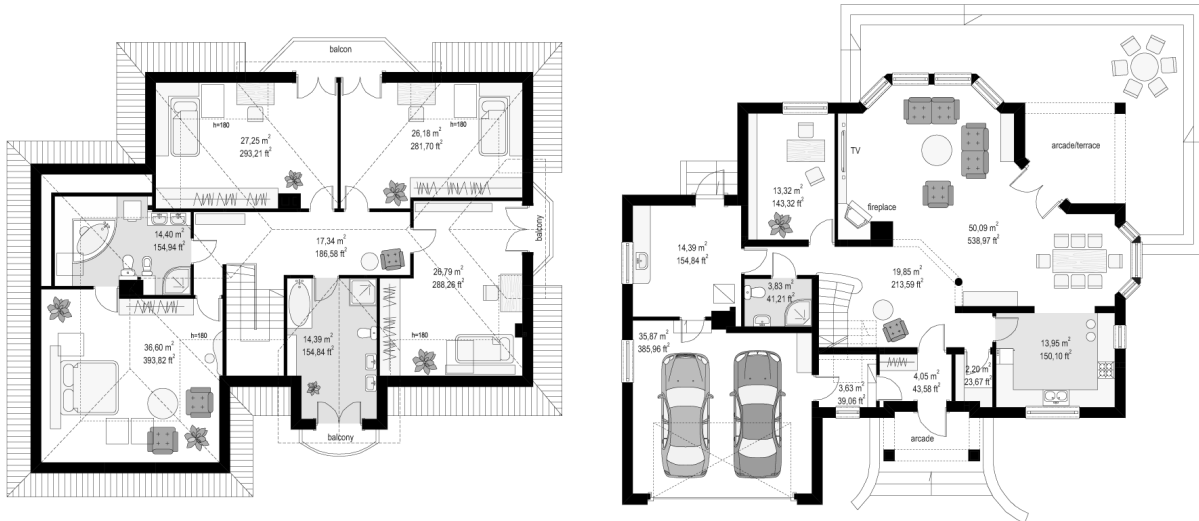
CENA PROJEKTU: 1040.00 \$



	Energy-saving package	bezpl.
	Ventilation and fireplace package	90
	Central vacuum package	70
	The electronic version of the project	120
	Solar installation package	70
	Underfloor heating package	80
	Heat pump package	70
	Water jacket package	70
	Boiler for solid fuel package	80
	Air conditioning package	80
	Fencing projects	140
	Septic tanks sealed package	bezpl.

Maja 4 house plan is another variant version of the popular house plan Maja. This project was enlarged in relation to its predecessors. The building was expanded, it was also raised elbow wall in the attic, which limited range squints in the bedrooms. The house has been designed for a family of four to six people. Rectangular main body of the building with an added part of the garage is covered with a hipped roof with dormers in the attic. Architecturally, the house Maja 4 is maintained in the style of a typical "Polish roofers", varied by many decorative details, such as bay windows, arcades with columns, dormers with balconies, arched windows on the first floor. The house has been open onto the garden - large glazed of the living room, a very nice terrace, and practical arcade result that the garden becomes an extension of the interior. Maja 4 house plan is an idea for a very convenient and comfortable house, even for a large family. On the ground floor besides the living area, which consists of: living room, dining room, lounge and partially open kitchen, also designed an additional, independent room and the technical part of the house with a garage for two cars. On the top floor are four bedrooms and a bathroom. There is also available mirror version of Maja 4 house plan.

Rzuty:



Elewacje:

