

## Dane techniczne:

Kubatura:	521 m <sup>3</sup>
Powierzchnia zabudowy:	90.25 m <sup>2</sup>
Powierzchnia całkowita:	146.28 m <sup>2</sup>
Powierzchnia netto:	122.6 m <sup>2</sup>
Powierzchnia użytkowa:	117.5 m <sup>2</sup>
Wymiary domu:	9.5 x 9.5 m
Minimalne wymiary działki:	17.5 x 17.5 m
Wysokość do kalenicy:	8.42 m / 27.62 ft
Powierzchnia dachu:	155.89 m <sup>2</sup>
Kąt nachylenia dachu:	45 degrees

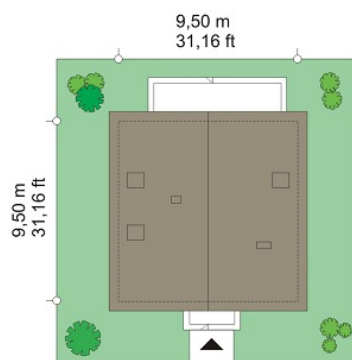
## Koszty realizacji:

Realizacja stanu surowego otwartego:	19 700
Realizacja stanu surowego zamkniętego:	33 400
Koszt robót wykończeniowych:	50 500
Realizacja domu pod klucz:	83 900

Koszty są podane w cenach netto, należy doliczyć podatek VAT

## Materiały:

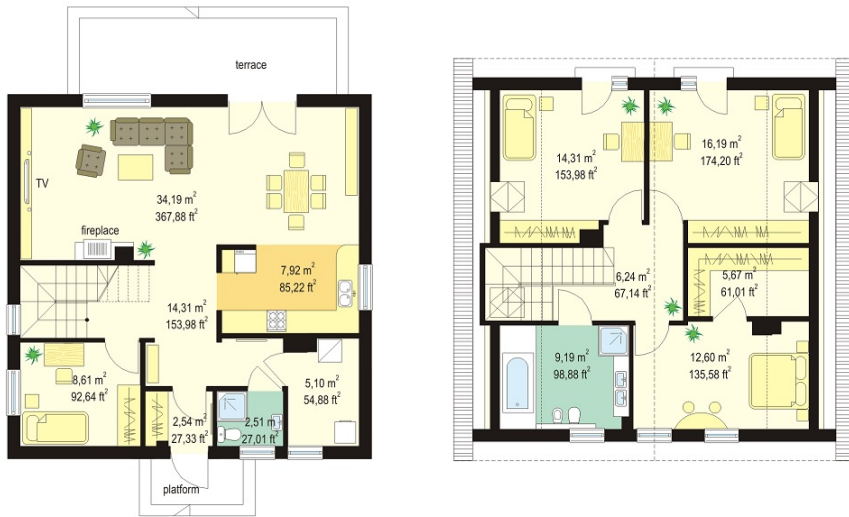
- Foundations - concrete bench and foundation walls with concrete blocks
- Exterior walls - brick walls - silicate blocks + polystyrene + thin-layer plaster
- Ceiling - wood or Teriva
- Elevation - thin-layer plaster on polystyrene
- Roof - tile

**CENA PROJEKTU: 970.00 \$**

	Energy-saving package	bezpl.
	Ventilation and fireplace package	90
	Central vacuum package	70
	The electronic version of the project	120
	Solar installation package	70
	Underfloor heating package	80
	Heat pump package	70
	Water jacket package	70
	Boiler for solid fuel package	80
	Air conditioning package	80
	Fencing projects	140
	Septic tanks sealed package	bezpl.

Margaret house plan is a family house with attic for a family of four to six people. House was built on a square plan 9,5 x 9,5 m and was covered by a gable roof. The essence of the project is simplicity solid in connection with well-chosen proportions and an interesting detail. House was designed in bricks technology. Inside, the building is divided into a living part on the ground floor and bedrooms in the attic. At the bottom, besides a large living room with dining area, lounge and open kitchen and an extra room was designed - study or bedroom, wc with shower, and a boiler room. In the attic there are three comfortable bedrooms and a large bathroom. Master bedroom has an additional dressing room..

## Rzuty:



## Elewacje:

