

Dane techniczne:

| | |
|----------------------------|-----------------------|
| Kubatura: | 502 m ³ |
| Powierzchnia zabudowy: | 121.48 m ² |
| Powierzchnia całkowita: | 178.42 m ² |
| Powierzchnia netto: | 139.33 m ² |
| Powierzchnia użytkowa: | 119.84 m ² |
| Wymiary domu: | 12.22 x 11.48 m |
| Minimalne wymiary działki: | 20.22 x 20.53 m |
| Wysokość do kalenicy: | 7,00 m / 22,96 ft |
| Powierzchnia dachu: | 189.9 m ² |
| Kąt nachylenia dachu: | 38 i 45 degrees |

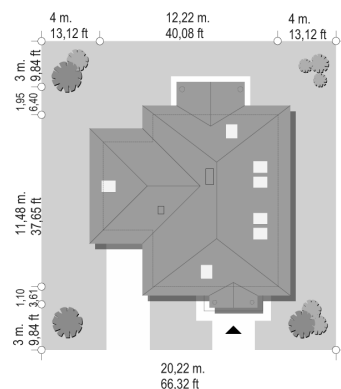
Koszty realizacji:

| | |
|--|---------|
| Realizacja stanu surowego otwartego: | 37 400 |
| Realizacja stanu surowego zamkniętego: | 55 700 |
| Koszt robót wykończeniowych: | 50 100 |
| Realizacja domu pod klucz: | 105 800 |

Koszty są podane w cenach netto, należy doliczyć podatek VAT

Materiały:

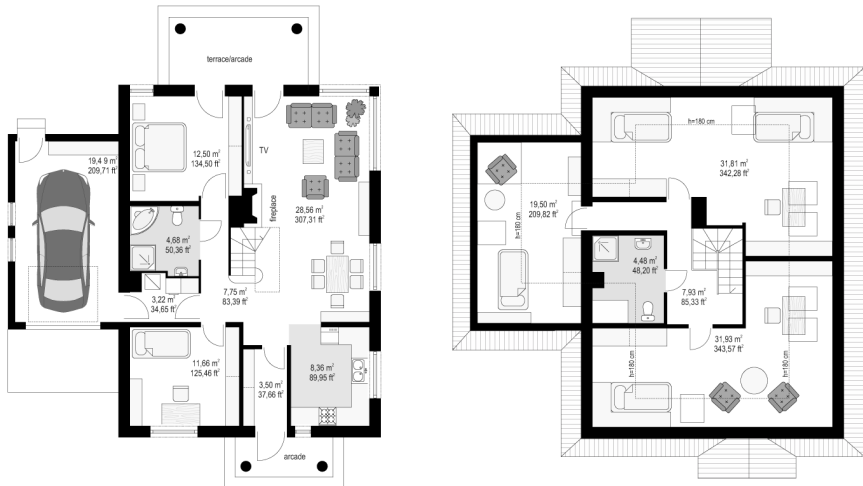
- Foundations - poured reinforced concrete
- External walls - bilayer walls - aerated concrete 24 + 12 polystyrene + thin-layer plaster
- Ceiling - reinforced concrete Teriva
- Elevation - thin-layer plaster
- Roof - tile or meatal roofing tile

**CENA PROJEKTU: 970.00 \$**

| | | |
|--|---------------------------------------|--------|
| | Energy-saving package | bezpł. |
| | Ventilation and fireplace package | 90 |
| | Central vacuum package | 70 |
| | The electronic version of the project | 120 |
| | Solar installation package | 70 |
| | Underfloor heating package | 80 |
| | Heat pump package | 70 |
| | Water jacket package | 70 |
| | Boiler for solid fuel package | 80 |
| | Air conditioning package | 80 |
| | Fencing projects | 140 |
| | Septic tanks sealed package | bezpł. |

Mazurka 2 house plan is a small house for a family of four to five people. The building was designed in such a way that the family could live having at its disposal only the ground floor - it is possible to finish the attic in the second stage of construction. On the ground floor besides the living room there are two additional bedrooms and a bathroom. In the attic you will find two additional large bedrooms with a second bathroom and an attic above the garage, which can be used as an extra room. In the ground floor next to the main body of the house an extra garage was designed. From the living room you can get to the garden through a large covered terrace. We have also a house plan Mazurka 2 in mirror version.

Rzuty:



Elewacje:

