

## Dane techniczne:

Kubatura:	797 m <sup>3</sup>
Powierzchnia zabudowy:	181.11 m <sup>2</sup>
Powierzchnia całkowita:	282.44 m <sup>2</sup>
Powierzchnia netto:	195.24 m <sup>2</sup>
Powierzchnia użytkowa:	180.49 m <sup>2</sup>
Wymiary domu:	13.45 x 16.44 m
Minimalne wymiary działki:	21.45 x 24.44 m
Wysokość do kalenicy:	8,21 m / 26,93 ft
Powierzchnia dachu:	326.26 m <sup>2</sup>
Kąt nachylenia dachu:	40 i 35 degrees

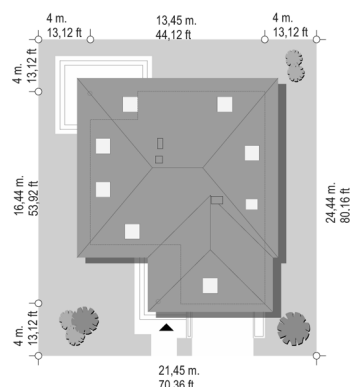
## Koszty realizacji:

Realizacja stanu surowego otwartego:	55 200
Realizacja stanu surowego zamkniętego:	79 000
Koszt robót wykończeniowych:	74 200
Realizacja domu pod klucz:	153 200

Koszty są podane w cenach netto, należy doliczyć podatek VAT

## Materiały:

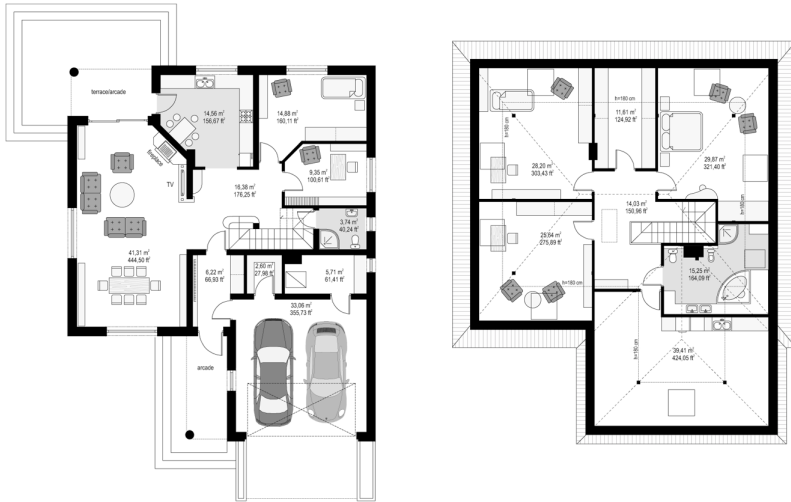
- Foundations - concrete bench and foundation walls with concrete blocks
- External walls - bilayer - porotherm blocks
- Ceiling - Teriva
- Roof - tile
- Elevation - thin-layer plaster

**CENA PROJEKTU: 1040.00 \$**

	Energy-saving package	bezpł.
	Ventilation and fireplace package	90
	Central vacuum package	70
	The electronic version of the project	120
	Solar installation package	70
	Underfloor heating package	80
	Heat pump package	70
	Water jacket package	70
	Boiler for solid fuel package	80
	Air conditioning package	80
	Fencing projects	140
	Septic tanks sealed package	bezpł.

Natalie 2 is a variant version of the Natalia house plan. In this version, the house is designed so that it also fit to plot with entering of adverse terms of the world. Living room at this house has been planned in such a way that it can be illuminated by the sun on both the front and back of the house. On the ground floor two additional rooms with private bathrooms and a garage for two cars has been designed. In the attic there are three nice bedrooms with a large bathroom and attic - laundry / dryer. Attic can be finished in the second stage. It can also be excluded from the usable area of the house, leaving the attic. There is also a mirror version of the Natalie 2 house plan.

## Rzuty:



## Elewacje:

