

Dane techniczne:

Kubatura:	718 m ³
Powierzchnia zabudowy:	186.32 m ²
Powierzchnia całkowita:	226.87 m ²
Powierzchnia netto:	128.03 m ²
Powierzchnia użytkowa:	121.27 m ²
Wymiary domu:	12.8 x 20.6 m
Minimalne wymiary działki:	20.8 x 28.6 m
Wysokość do kalenicy:	7,12 m / 23,35 ft
Powierzchnia dachu:	301.71 m ²
Kąt nachylenia dachu:	30 degrees

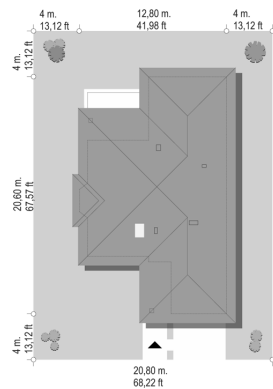
Koszty realizacji:

Realizacja stanu surowego otwartego:	52 200
Realizacja stanu surowego zamkniętego:	69 900
Koszt robót wykończeniowych:	63 200
Realizacja domu pod klucz:	133 000

Koszty są podane w cenach netto, należy doliczyć podatek VAT

Materiały:

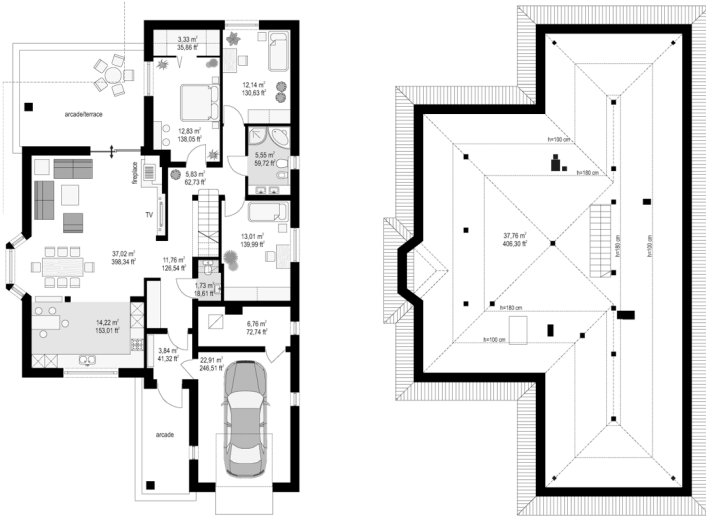
- Foundations - concrete bench and foundation walls with concrete blocks
- External walls - brick walls -porotherm 25 blocks + polystyrene + thin-layer plaster
- Ceiling - Teriva
- Elevation - thin-layer plaster on polystyrene
- Roof - tile

**CENA PROJEKTU: 1040.00 \$**

	Energy-saving package	bezpł.
	Ventilation and fireplace package	90
	Central vacuum package	70
	The electronic version of the project	120
	Solar installation package	70
	Underfloor heating package	80
	Heat pump package	70
	Water jacket package	70
	Boiler for solid fuel package	80
	Air conditioning package	80
	Fencing projects	140
	Septic tanks sealed package	bezpł.

Natalia 4 is a variant version of the popular house plan Natalia. This time the house is narrower, adapted to the narrow plot. This is a one storey building covered by an envelope roof with two build parts - garage from the front and bedrooms from the garden side. Above the ground floor is an attic that can be adapted in the second stage as usable attic. Outside architecture of Natalia 4 is unpretentious and it combines the traditional form of Polish "tile" with modern detail and materials. The whole thing is light and retains in a human scale. The house fits perfectly into the environment and maintains in contact with the garden. Inside is a single space of living area - with a living room, hall, large open kitchen and a night part - with three bedrooms and a bathroom, and utility part - with a garage and boiler room. Living room with dining area and bay window, corner fireplace, television exposed wall or wide glass doors to the partially covered terrace and garden, is a connector all the rooms and main living space of the household. From here we move to the bedroom or to attic, which can be adapted to usable attic. There is also a mirror version of the Natalie 4 house plan.

Rzuty:



Elewacje:

