

Dane techniczne:

Kubatura:	998 m ³
Powierzchnia zabudowy:	217.63 m ²
Powierzchnia całkowita:	417.16 m ²
Powierzchnia netto:	281.7 m ²
Powierzchnia użytkowa:	248.25 m ²
Wymiary domu:	22.86 x 12.25 m
Minimalne wymiary działki:	29.86 x 20.25 m
Wysokość do kalenicy:	9,24 m / 30,31 ft
Powierzchnia dachu:	348.35 m ²
Kąt nachylenia dachu:	32 degrees

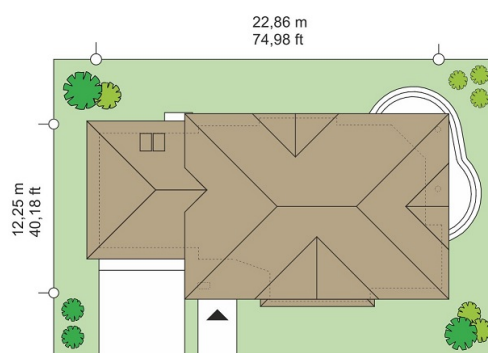
Koszty realizacji:

Realizacja stanu surowego otwartego:	65 900
Realizacja stanu surowego zamkniętego:	96 300
Koszt robót wykończeniowych:	105 200
Realizacja domu pod klucz:	201 400

Koszty są podane w cenach netto, należy doliczyć podatek VAT

Materiały:

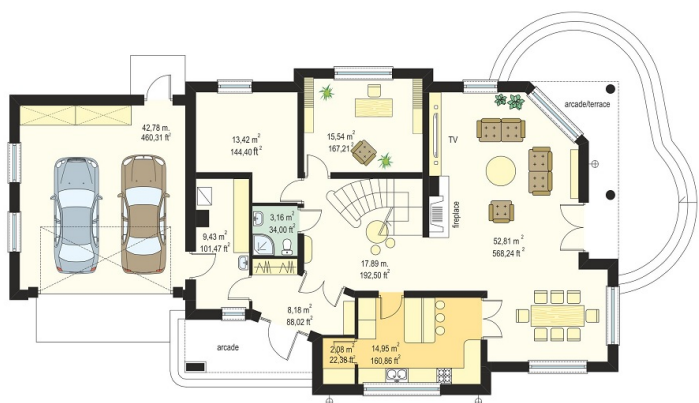
- Foundations - concrete
- External walls - bilayer: porotherm blocks + polystyrene or mineral wool
- Ceiling - monolithic reinforced concrete
- Roof - ceramic tile

**CENA PROJEKTU: 1250.00 \$**

	Energy-saving package	bezpł.
	Ventilation and fireplace package	90
	Central vacuum package	70
	The electronic version of the project	120
	Solar installation package	70
	Underfloor heating package	80
	Heat pump package	70
	Water jacket package	70
	Boiler for solid fuel package	80
	Air conditioning package	80
	Fencing projects	140
	Septic tanks sealed package	bezpł.

Stately house is a large, representative house for a family of 4-6 people. Storeyed block of the house creates a full-size rooms on the upper floor, without slants. On the ground floor there is large living room connected with hall and dining area. The living room has a beautiful lowered window in the angled corner, overlooking the garden. The dining room is partly connected to the spacious kitchen with a pantry. On the ground floor there was designed an extra room-study and additional utility room. On the first floor there are 4 bedrooms, including one - master bedroom - with its own bathroom and dressing room. In the attic over the garage an extra room was designed - which could serve e.g. as home cinema or exercise room. External appearance of house: front corner arcade with elegant front door, large kitchen window, curious rear garden arcade supported by columns, balconies to the garden - all these elements give a block finesse and elegance. There is also available a mirror version of this house plan.

Rzuty:



Elewacje:



MG Projekt Pracownia Architektoniczna s.c. ul. Uczniowska 14 03-112 Warszawa
 tel.: 22 676 66 83, 22 676 66 88, fax: 22 676 66 82, mob.: 600 392 884,
 tylko przedstawiciele 606 200 136, www.mgprojekt.com.pl,
mgprojekt@mgprojekt.com.pl

MG Projekt