

## Dane techniczne:

|                            |                      |
|----------------------------|----------------------|
| Kubatura:                  | 317 m <sup>3</sup>   |
| Powierzchnia zabudowy:     | 55.88 m <sup>2</sup> |
| Powierzchnia całkowita:    | 79.74 m <sup>2</sup> |
| Powierzchnia netto:        | 66.62 m <sup>2</sup> |
| Powierzchnia użytkowa:     | 66.62 m <sup>2</sup> |
| Wymiary domu:              | 9 x 7.55 m           |
| Minimalne wymiary działki: | 17.3 x 15.55 m       |
| Wysokość do kalenicy:      | 6,68 m / 21,91 ft    |
| Powierzchnia dachu:        | 122.5 m <sup>2</sup> |
| Kąt nachylenia dachu:      | 45 degrees           |

## Koszty realizacji:

|  |        |
|--|--------|
| Realizacja stanu surowego otwartego:   | 13 900 |
| Realizacja stanu surowego zamkniętego: | 22 000 |
| Koszt robót wykończeniowych:           | 26 800 |
| Realizacja domu pod klucz:             | 48 700 |

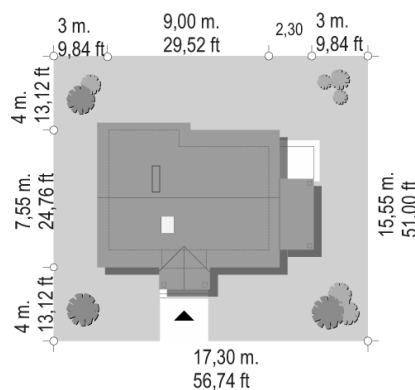
Koszty są podane w cenach netto, należy doliczyć podatek VAT

## Materiały:

- Foundations - poured concrete
- External walls - brick walls - aerated concrete + polystyrene or ceramic brick + polystyrene
- Ceiling - wood or reinforced concrete Teriva
- Elevation - thin-layer plaster
- Roof - tile or meatal roofing tile



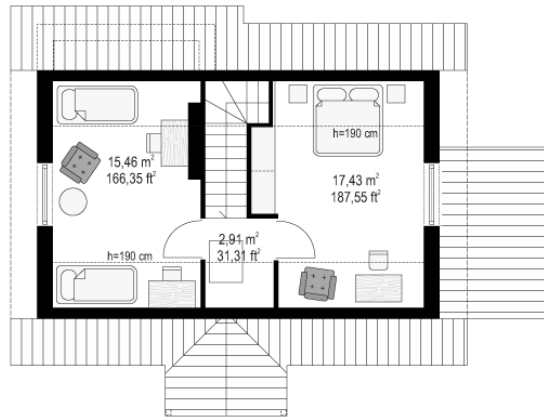
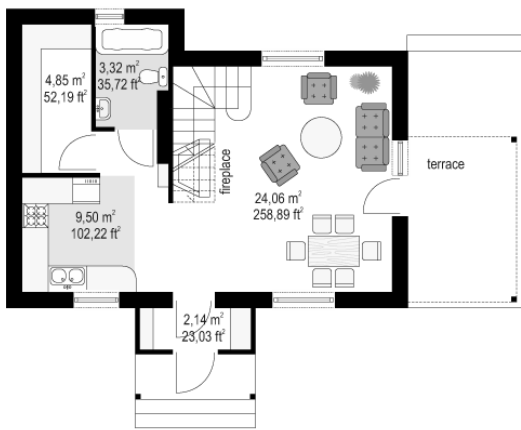
## CENA PROJEKTU: 870.00 \$



|  |                                       |        |
|--|---------------------------------------|--------|
|  | Energy-saving package                 | bezpł. |
|  | Ventilation and fireplace package     | 90     |
|  | Central vacuum package                | 70     |
|  | The electronic version of the project | 120    |
|  | Air conditioning package              | 80     |
|  | Fencing projects                      | 140    |
|  | Septic tanks sealed package           | bezpł. |

Crumb house plan is an extended version of Pine house plan. The building has been increased by utility room on the ground floor, porch with a visor before entering and partly covered terrace. Crumb house plan is a great option for a small family, it can serve both as a holiday house as well as year-round. The building is cheap in construction and subsequent operation. Its shape has been formed with a view to possible expansion. Partial basement can be helpful when you need to place in your home for example hydrovor. There is a large living room with fireplace on the ground floor, with access to a partially covered terrace. In the attic we designed two large bedrooms. Our studio has a mirror version of Crumb and the version without basement or with complete basement.

## Rzuty:



## Elewacje:

