

Dane techniczne:

Kubatura:	851 m ³
Powierzchnia zabudowy:	170.95 m ²
Powierzchnia całkowita:	293.78 m ²
Powierzchnia netto:	190.68 m ²
Powierzchnia użytkowa:	181.39 m ²
Wymiary domu:	14 x 15.6 m
Minimalne wymiary działki:	21.6 x 23.6 m
Wysokość do kalenicy:	9,45 m / 30,99 ft
Powierzchnia dachu:	235.98 m ²
Kąt nachylenia dachu:	25 degrees

Koszty realizacji:

Realizacja stanu surowego otwartego:	60 000
Realizacja stanu surowego zamkniętego:	86 600
Koszt robót wykończeniowych:	76 000
Realizacja domu pod klucz:	162 600

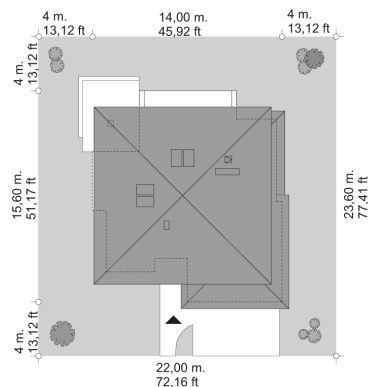
Koszty są podane w cenach netto, należy doliczyć podatek VAT

Materiały:

- Foundations - concrete bench and foundation walls with concrete blocks
- External walls - brick walls -porotherm 25 blocks + polystyrene + thin-layer plaster
- Ceiling - Teriva
- Roof - tile
- Elevation - thin-layer plaster on polystyrene



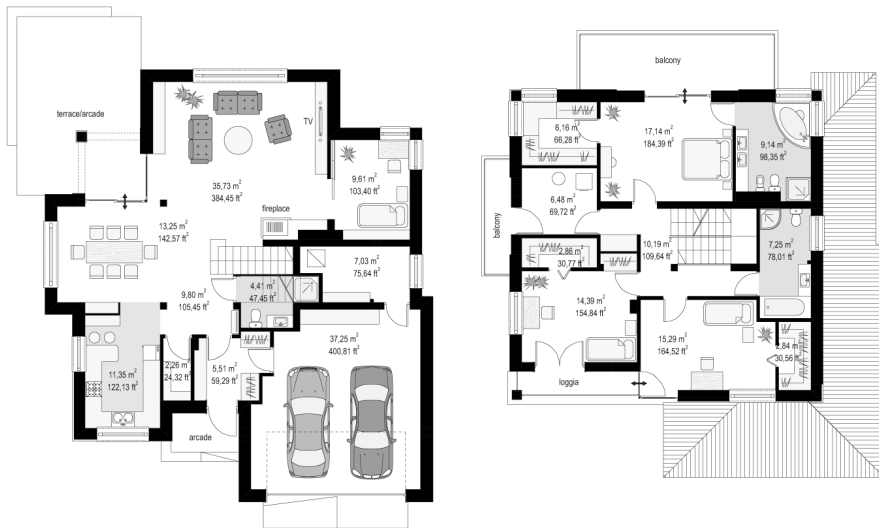
CENA PROJEKTU: 1140.00 \$



	Energy-saving package	bezpł.
	Ventilation and fireplace package	90
	Central vacuum package	70
	The electronic version of the project	120
	Solar installation package	70
	Underfloor heating package	80
	Heat pump package	70
	Water jacket package	70
	Boiler for solid fuel package	80
	Air conditioning package	80
	Fencing projects	140
	Septic tanks sealed package	bezpł.

Opal house plan has been created for a family of four to five people. House is storey urban villa with modern architecture, covered by a hipped roof. The compact body of the building with a built garage and an arcade from the garden, was curiously decorated with clinker and wooden cladding façade and loggias, arcade entrance and large balcony behind the house. All elements form a coherent and calm whole. On the ground floor there was designed a large room in a shape similar to a square, with dining room and hall, with a partially open kitchen and an extra room - study or a guest bedroom. The location of the stairs in a central place will provide additional interior decoration of open ground. On the first floor there are bedrooms with a separate apartment parents, with its own bathroom, dressing room and large balcony-terrace overlooking the garden. On the first floor, if necessary, you can save an additional fourth bedroom - instead laundry and wardrobe. There is also available a mirror version of this house plan.

Rzuty:



Elewacje:

