

# 199.79 m<sup>2</sup>

# Under oak tree

## Dane techniczne:

Kubatura:	984 m <sup>3</sup>
Powierzchnia zabudowy:	194.22 m <sup>2</sup>
Powierzchnia całkowita:	338.1 m <sup>2</sup>
Powierzchnia netto:	209.12 m <sup>2</sup>
Powierzchnia użytkowa:	199.79 m <sup>2</sup>
Wymiary domu:	20.2 x 12.68 m
Minimalne wymiary działki:	27.84 x 20.68 m
Wysokość do kalenicy:	8,24 m / 27,03 ft
Powierzchnia dachu:	357.5 m <sup>2</sup>
Kąt nachylenia dachu:	36 i 38 degrees

## Koszty realizacji:

Realizacja stanu surowego otwartego:	57 800
Realizacja stanu surowego zamkniętego:	87 100
Koszt robót wykończeniowych:	76 600
Realizacja domu pod klucz:	163 600

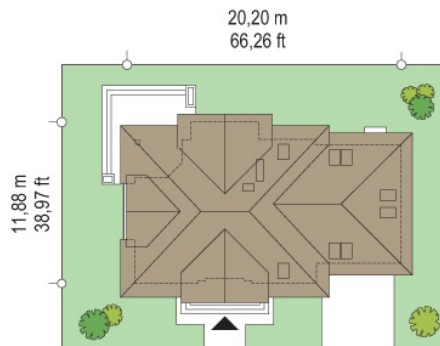
Koszty są podane w cenach netto, należy doliczyć podatek VAT

## Materiały:

- Foundations - concrete bench and foundation walls with concrete blocks
- External walls - bilayer wall porotherm blocks
- Ceiling - Teriva
- Roof - tile
- Elevation - thin-layer plaster



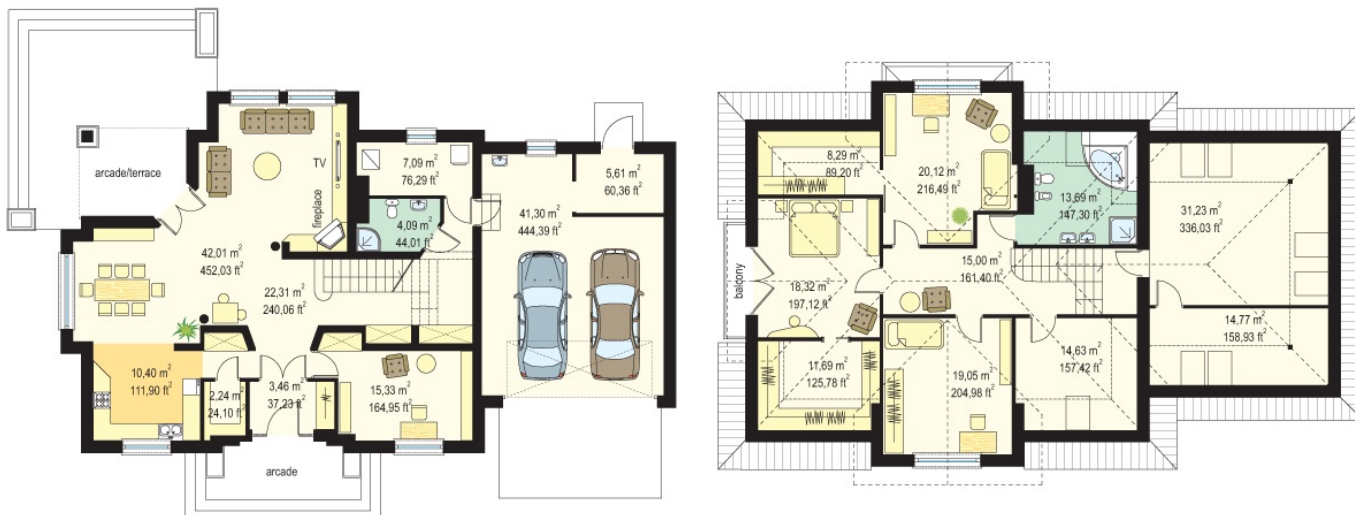
**CENA PROJEKTU: 1070.00 \$**



	Energy-saving package	bezpł.
	Ventilation and fireplace package	90
	Central vacuum package	70
	The electronic version of the project	120
	Solar installation package	70
	Underfloor heating package	80
	Heat pump package	70
	Water jacket package	70
	Boiler for solid fuel package	80
	Air conditioning package	80
	Fencing projects	140
	Septic tanks sealed package	bezpł.

House plan under oak tree is a comprehensive storey villa with attic. It is designed for a family of 4 to 5 people. The building structure was covered with a hipped roof with large dormers on each elevation it makes the house look attractive from all sides. External appearance is diversified by bay windows, and balcony and a garden arcade. Front of the building will appeal to customers who appreciate traditional architecture, but not necessarily wanting to have columns at the entrance to his home. The interior of the ground floor is the combined area of the hall, living room, dining room and kitchen, and an additional room. In the attic are designed four rooms and an attic over the garage that you can freely use. There is also available mirror version of this house plan.

## Rzuty:



## Elewacje:

