

Dane techniczne:

Kubatura:	1760 m ³
Powierzchnia zabudowy:	365.5 m ²
Powierzchnia całkowita:	581.37 m ²
Powierzchnia netto:	433.49 m ²
Powierzchnia użytkowa:	402.65 m ²
Wymiary domu:	24.2 x 23.12 m
Minimalne wymiary działki:	32.2 x 30.12 m
Wysokość do kalenicy:	8,47 / 27,78 ft
Powierzchnia dachu:	424.12 m ²
Kąt nachylenia dachu:	22 degrees

Koszty realizacji:

Realizacja stanu surowego otwartego:	102 500
Realizacja stanu surowego zamkniętego:	144 700
Koszt robót wykończeniowych:	132 700
Realizacja domu pod klucz:	277 300

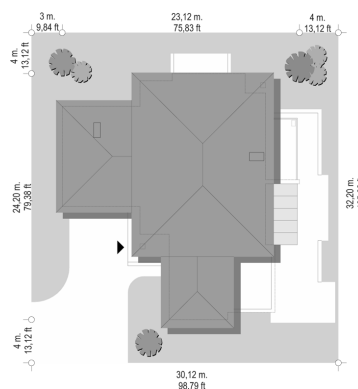
Koszty są podane w cenach netto, należy doliczyć podatek VAT

Materiały:

- Foundations - poured concrete
- External walls - bilayer walls - porotherm 25 blocks + polystyrene (or mineral wool)
- Ceiling - monolithic reinforced concrete
- Roof - tile
- Elevation - thin-layer plaster



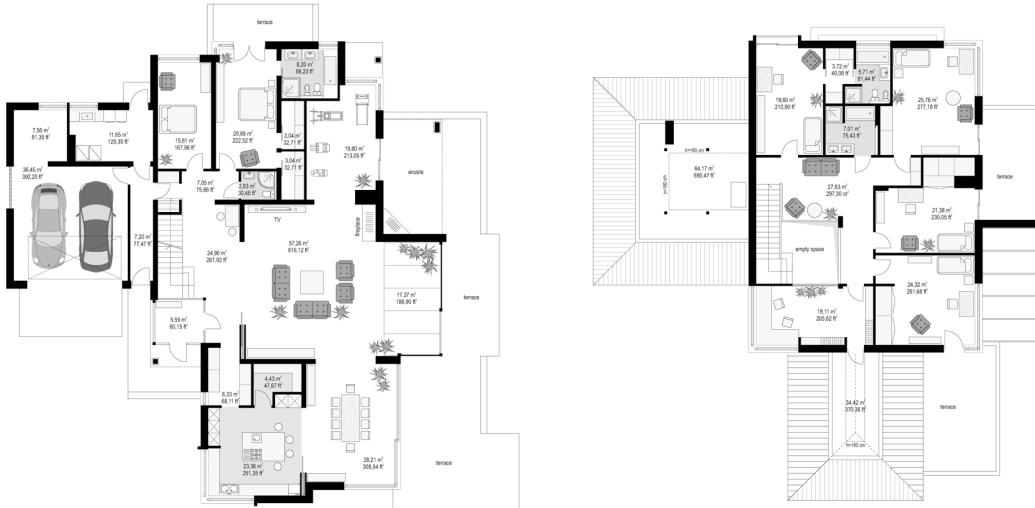
CENA PROJEKTU: 2140.00 \$



	Energy-saving package	bezpł.
	Ventilation and fireplace package	90
	Central vacuum package	70
	The electronic version of the project	120
	Solar installation package	70
	Underfloor heating package	80
	Heat pump package	70
	Water jacket package	70
	Boiler for solid fuel package	80
	Air conditioning package	80
	Fencing projects	140
	Septic tanks sealed package	bezpł.

Luxury house plan is one of the largest and most comfortable houses in our offer. Designed as a modern, two-storey villa, with fragmented, expanded block. House is provided for a large family of 4 to 7 people. The outer body is a combination of two-story house with added storey wings and a winter garden and a covered terrace on the garden side. Modernist design details such as fragments of flat roofs, terraces on the first floor, large glass or corner windows give the house a very elegant, timeless character. Luxury house interior was designed by separated living area on the ground floor from the intimate part with bedrooms. On the ground floor was placed a large living room open to the garden conservatory, combined with beautifully lit dining room and a lobby with representational staircase and opening space to the mezzanine on the first floor, as well as a sports room combined with a covered arcade with outdoor fireplace. From the lobby and dining we reach to the comfortable kitchen with island and pantry. From the corner kitchen window you can watch the entrance to the building. Entrance vestibule is completely glazed - so that the entrance to the house had a maximum representative character. In the house plan Luxury on the ground floor there is a master bedroom with a dressing room, a bathroom, its own terrace, and an additional guest room. In a separate part of the house was placed utility rooms and a garage. First floor is the kingdom of children - there are four bedrooms, including one with its own bathroom, and a study-library, with a lovely corner window overlooking the front of the plot. There is also available mirror version of this house plan.

Rzuty:



Elewacje:

