

Dane techniczne:

Kubatura:	2240 m ³
Powierzchnia zabudowy:	390.59 m ²
Powierzchnia całkowita:	728.65 m ²
Powierzchnia netto:	610.12 m ²
Powierzchnia użytkowa:	486.57 m ²
Wymiary domu:	25.09 x 27.08 m
Minimalne wymiary działki:	33.09 x 37.83 m
Wysokość do kalenicy:	9,76 m / 32,013 ft
Powierzchnia dachu:	453.76 m ²
Kąt nachylenia dachu:	30 degrees

Koszty realizacji:

Realizacja stanu surowego otwartego:	122 800
Realizacja stanu surowego zamkniętego:	168 500
Koszt robót wykończeniowych:	149 300
Realizacja domu pod klucz:	317 700

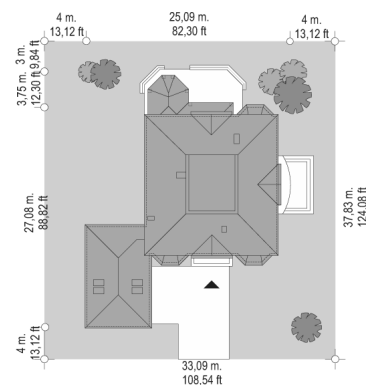
Koszty są podane w cenach netto, należy doliczyć podatek VAT

Materiały:

- Foundations - concrete bench and foundation walls with concrete blocks
- External walls - brick walls porotherm + mineral wool
- Interior walls - porotherm
- Ceiling - monolithic reinforced concrete and teriva
- Roof - tile
- Elevation - thin-layer plaster



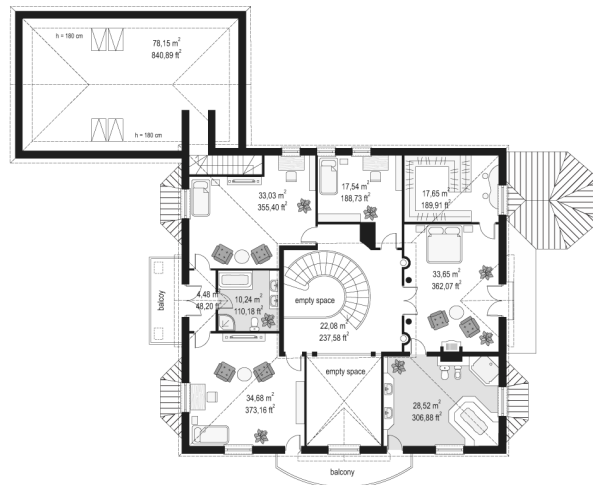
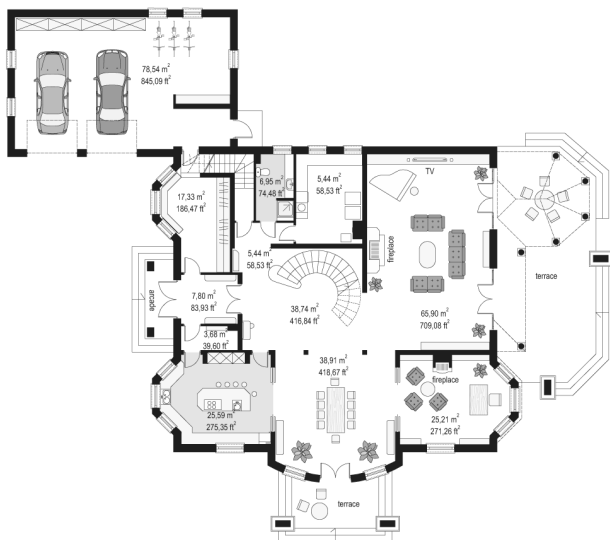
CENA PROJEKTU: 2450.00 \$



	Energy-saving package	bezpł.
	Ventilation and fireplace package	90
	Central vacuum package	70
	The electronic version of the project	120
	Solar installation package	70
	Underfloor heating package	80
	Heat pump package	70
	Water jacket package	70
	Boiler for solid fuel package	80
	Air conditioning package	80
	Fencing projects	140
	Septic tanks sealed package	bezpł.

Regent house plan is an elegant, extended residence for the lucky ones with a beautiful plot. Regent has all the necessary functions: representative hall with a beautiful staircase, large dining room and living room, an extensive library and a beautiful kitchen. At the entrance was designed large, comfortable dressing room. On the first floor was planned parents' apartment with bathroom and dressing room, and two additional bedrooms - with private bathroom (alternatively can also be two bathrooms - separately for each room). On the first floor there is also one spare room. In a separate wing of the house is a large garage with utility space. Above the garage in the attic room was designed sport and recreation room accessible from the ground floor separate staircase. Regent house is designed in such a way as to avoid frequent in large houses accumulation of smaller spaces - there is not much room, but they are large. Of course, a house can be freely arranged inside - in accordance with the clients wishes. There is also available mirror version of this house plan.

Rzuty:



Elewacje:

