

## Dane techniczne:

Kubatura:	456 m <sup>3</sup>
Powierzchnia zabudowy:	104.33 m <sup>2</sup>
Powierzchnia całkowita:	158.22 m <sup>2</sup>
Powierzchnia netto:	133.85 m <sup>2</sup>
Powierzchnia użytkowa:	113.02 m <sup>2</sup>
Wymiary domu:	13.6 x 7.8 m
Minimalne wymiary działki:	20.6 x 17 m
Wysokość do kalenicy:	7,76 m / 25,45 ft
Powierzchnia dachu:	178 m <sup>2</sup>
Kąt nachylenia dachu:	45 degrees

## Koszty realizacji:

Realizacja stanu surowego otwartego:	34 900
Realizacja stanu surowego zamkniętego:	48 200
Koszt robót wykończeniowych:	48 800
Realizacja domu pod klucz:	97 000

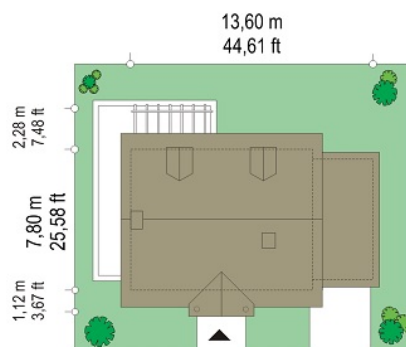
Koszty są podane w cenach netto, należy doliczyć podatek VAT

## Materiały:

- Foundations - Concrete
- External walls - aerated concrete + polystyrene
- Ceiling - wood truss girders
- Elevation - thin-layer plaster
- Roof - ceramic tile or metal roofing tile



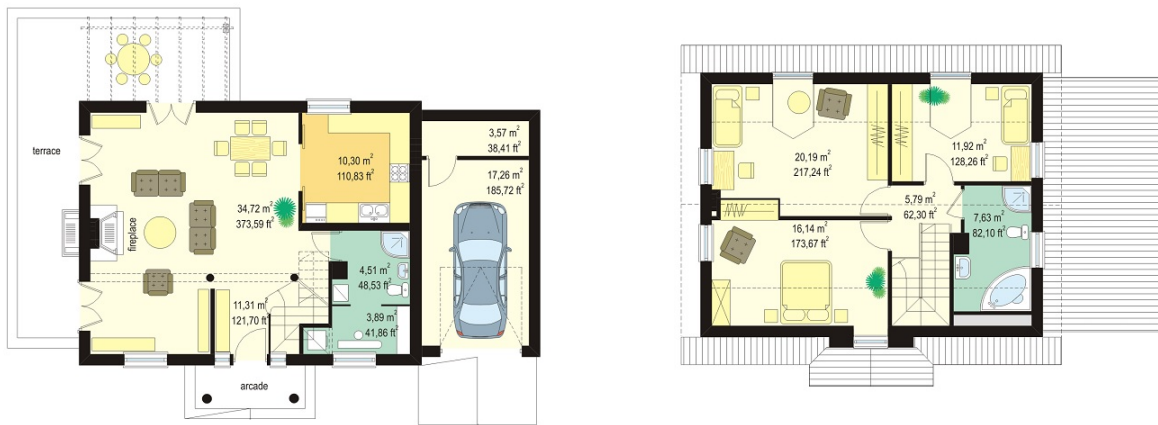
## CENA PROJEKTU: 900.00 \$



	Energy-saving package	bezpł.
	Ventilation and fireplace package	90
	Central vacuum package	70
	The electronic version of the project	120
	Solar installation package	70
	Underfloor heating package	80
	Heat pump package	70
	Water jacket package	70
	Boiler for solid fuel package	80
	Air conditioning package	80
	Fencing projects	140
	Septic tanks sealed package	bezpł.

Fairytale 2 house plan is extended version of the Fairytale. The original house plan was expanded, the extra room on the ground floor has been removed to enlarge the living room and the kitchen. Spacious living room with a central fireplace and lighting of the three sides is very attractive. In the Fairytale 2 house plan, the bathroom with the usable annex with a place on the boiler and washing machine was planned. In the attic of the building there are three bedrooms and a second bathroom. Body of the building refers to the traditional architecture. The advantage of this house plan is the universal position and lighting the living room, making the house suitable for a different plot. There is also a mirror version of Fairytale 2 house plan.

## Rzuty:



## Elewacje:

