

Dane techniczne:

Kubatura:	1096 m ³
Powierzchnia zabudowy:	158.85 m ²
Powierzchnia całkowita:	364.5 m ²
Powierzchnia netto:	238.51 m ²
Powierzchnia użytkowa:	204.31 m ²
Wymiary domu:	13.09 x 16.08 m
Minimalne wymiary działki:	19.99 x 24.08 m
Wysokość do kalenicy:	8,55 m / 28,04 ft
Powierzchnia dachu:	249.57 m ²
Kąt nachylenia dachu:	24 i 20 degrees

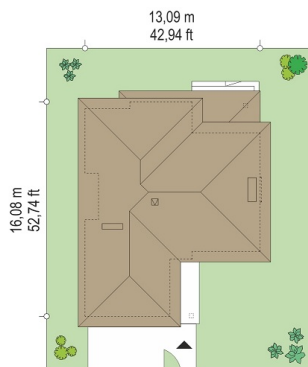
Koszty realizacji:

Realizacja stanu surowego otwartego:	67 900
Realizacja stanu surowego zamkniętego:	96 800
Koszt robót wykończeniowych:	93 000
Realizacja domu pod klucz:	189 800

Koszty są podane w cenach netto, należy doliczyć podatek VAT

Materiały:

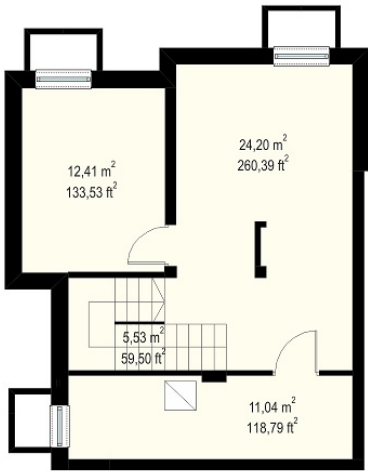
- Foundations - concrete bench and foundation walls with concrete blocks
- External walls - brick walls -porotherm 25 blocks + polystyrene + thin-layer plaster
- Ceiling - Teriva
- Roof - tile
- Elevation - thin-layer plaster on polystyrene

**CENA PROJEKTU: 1250.00 \$**

	Energy-saving package	bezpł.
	Ventilation and fireplace package	90
	Central vacuum package	70
	The electronic version of the project	120
	Solar installation package	70
	Underfloor heating package	80
	Heat pump package	70
	Water jacket package	70
	Boiler for solid fuel package	80
	Air conditioning package	80
	Fencing projects	140
	Septic tanks sealed package	bezpł.

Riviera house is the original one-story house designed for a family of four to six people.. The building is designed as a one-storey body in the T-shaped covered by mild hipped roof. House with its style is trying to establish to the nature of the urban villa, combining elements of modernist architecture with modern details and materials. As a result of this combination we succeeded obtained an elegant form. Building has been designed in such way that it can be located also at unfavorable in relation to the world side plot. Even at the entrance on the south side in the living room will be a lot of light - thanks to large glazing. From the garden side was designed cozy terrace covered by the partly roof arcades. Riviera house plan inside is divided on functional zones. On the ground floor most of the space it occupies by living space with a beautiful two-storey living room - with an entresol on the first floor, dining room, lobby with representational staircase and partly open kitchen. In addition, on the ground floor provides room - office or spare bedroom and a garage. By stairs we go down to the basement, where are technical rooms. On the ground floor there are three bedrooms with wardrobes, two bathrooms (one belonging to an isolated parents' apartment with terrace) and a laundry room. Large hall - entresol of is natural extension of the living room. There is also available mirror version of this house plan.

Rzuty:



Elewacje:



