

Dane techniczne:

Kubatura:	751 m ³
Powierzchnia zabudowy:	188.72 m ²
Powierzchnia całkowita:	231.48 m ²
Powierzchnia netto:	130.23 m ²
Powierzchnia użytkowa:	123.75 m ²
Wymiary domu:	16.96 x 15.5 m
Minimalne wymiary działki:	24.16 x 23.5 m
Wysokość do kalenicy:	6,65 m / 21,81 ft
Powierzchnia dachu:	300.34 m ²
Kąt nachylenia dachu:	30 degrees

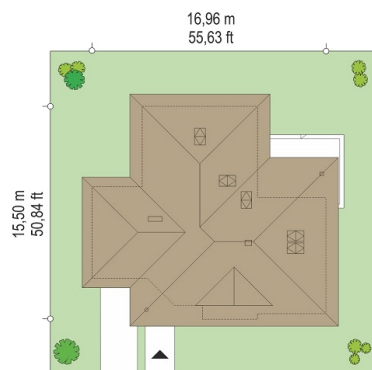
Koszty realizacji:

Realizacja stanu surowego otwartego:	51 200
Realizacja stanu surowego zamkniętego:	75 000
Koszt robót wykończeniowych:	61 000
Realizacja domu pod klucz:	135 900

Koszty są podane w cenach netto, należy doliczyć podatek VAT

Materiały:

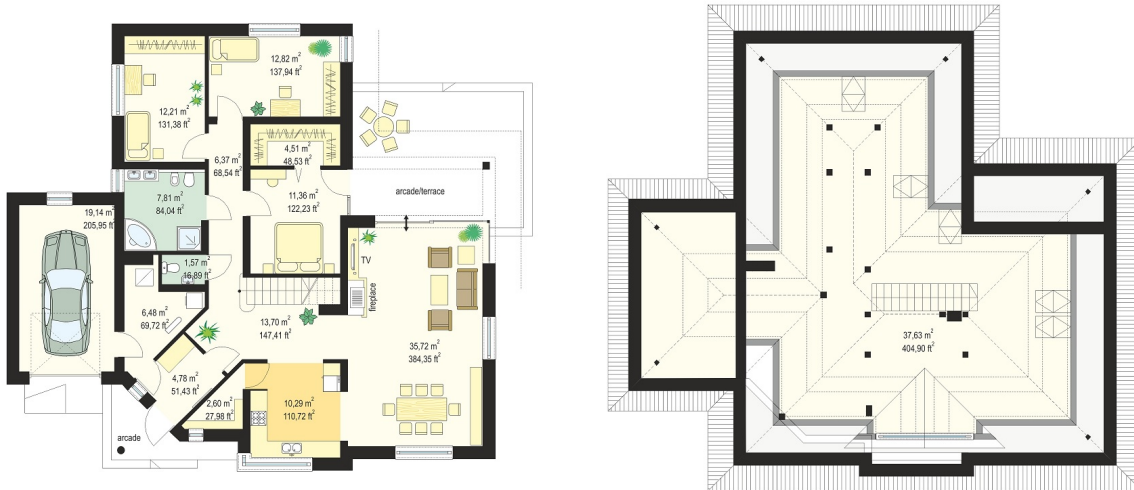
- Foundations - concrete bench and foundation walls with concrete blocks
- External walls - brick walls -porotherm 25 blocks + polystyrene + thin-layer plaster
- Ceiling - Teriva
- Elevation - thin-layer plaster on polystyrene
- Roof - tile

**CENA PROJEKTU: 1040.00 \$**

	Energy-saving package	bezpł.
	Ventilation and fireplace package	90
	Central vacuum package	70
	The electronic version of the project	120
	Solar installation package	70
	Underfloor heating package	80
	Heat pump package	70
	Water jacket package	70
	Boiler for solid fuel package	80
	Air conditioning package	80
	Fencing projects	140
	Septic tanks sealed package	bezpł.

Development house is a proposal for a modern, storey house for a family of four-five people. Development is built on the L-shaped, with built another garage. The entire functional program of the house is located on the ground floor, plus above was designed as a large attic that can be adapted for the a usable attic. Concept of Development is possibility of enlarging the interior of the house with extra space after years of living - without a lot of complications. House will be growing with your family, with growing up children, who need more space. Interior of the building consists of three separate parts: the day - with a living room, night - with the bedrooms, and technical - with garage and boiler room. The living area is large living room with exposed fireplace and beautiful glass wall - opening for the partly covered terrace and garden, semi-open kitchen, and a hall with stairs. Sleeping area is three bedrooms with en suite - including the master bedroom with dressing room and exit to the terrace. Large techno-economic space is composed of: a large boiler room, garage and pantry accessible from the kitchen. External architecture of Development house is a combination of classical form of gable, symmetrical roof with a modern line of walls and windows - with corner windows, bay windows, parts of walls clad with wood. The whole creates a varied interesting whole, with good proportions and leaves the human scale of the building. House will fits perfectly with the surrounding land, giving the investor a unique pleasure of being close to nature. There is also available mirror version of this house plan.

Rzuty:



Elewacje:

