

Dane techniczne:

Kubatura:	798 m ³
Powierzchnia zabudowy:	157.43 m ²
Powierzchnia całkowita:	276.78 m ²
Powierzchnia netto:	211.8 m ²
Powierzchnia użytkowa:	187.05 m ²
Wymiary domu:	16.39 x 11.39 m
Minimalne wymiary działki:	25.32 x 19.45 m
Wysokość do kalenicy:	8,55 / 28,04 ft
Powierzchnia dachu:	297.13 m ²
Kąt nachylenia dachu:	34, 39 i 45 degrees

Koszty realizacji:

Realizacja stanu surowego otwartego:	49 500
Realizacja stanu surowego zamkniętego:	76 600
Koszt robót wykończeniowych:	67 800
Realizacja domu pod klucz:	144 300

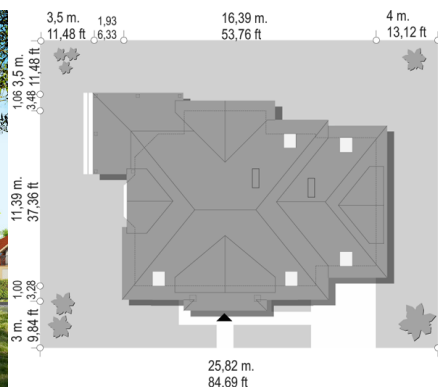
Koszty są podane w cenach netto, należy doliczyć podatek VAT

Materiały:

- Foundations - concrete bench and foundation walls with concrete blocks
- External walls - brick walls -porotherm blocks + polystyrene + thin-layer plaster
- Ceiling - Teriva
- Elevation - thin-layer plaster on polystyrene
- Roof - tile



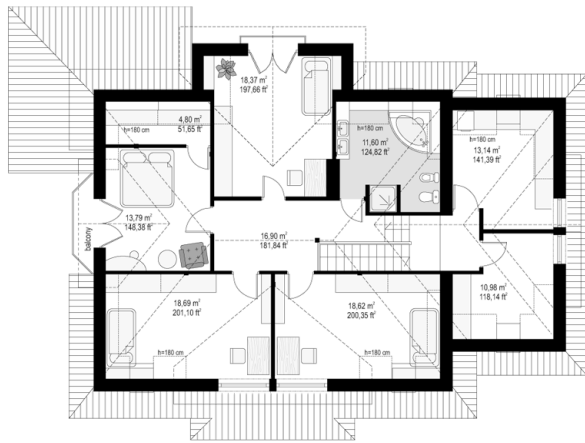
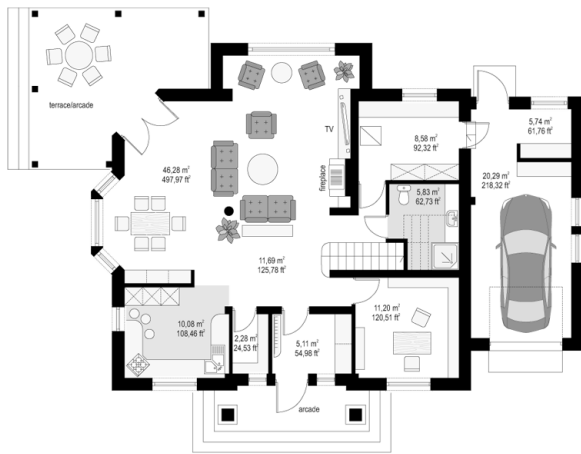
CENA PROJEKTU: 1070.00 \$



	Energy-saving package	bezpł.
	Ventilation and fireplace package	90
	Central vacuum package	70
	The electronic version of the project	120
	Solar installation package	70
	Underfloor heating package	80
	Heat pump package	70
	Water jacket package	70
	Boiler for solid fuel package	80
	Air conditioning package	80
	Fencing projects	140
	Septic tanks sealed package	bezpł.

House Ruby 3 is a variant version of the popular house Ruby. In relation to the basic version house Ruby 3 is reduced, has single garage and built-emptiness of the living room in the attic. House is designed for a family of five - to six people. Storey block with usable attic, consists of residential part and built another on the side garage. The entire house of the building is covered with a hipped roof with large dormers on each elevation. Quiet suburban architecture of house interesting details, such as bay windows, porches with columns and arched windows, balconies, connects with functionally designed interior of the building. A special attraction is a large front dormer with entrance porch and columns. From the garden and a large arcade, where under the roofed you can shelter from the rain or hot sun. Interior of the ground floor house Ruby 3 is primarily open daily space, with living room, dining room and hall. On the ground floor was designed kitchen and extra room which could serve as office or bedroom or for example, a guest bedroom. They fit also utility rooms - a boiler room and a garage with facilities garden. In the attic there are was planned five bedrooms with dressing rooms and built-in wardrobes, a large bathroom and a laundry-drying. House is ideal for a large family with many children. There is also available mirror version of this house plan.

Rzuty:



Elewacje:

