

Dane techniczne:

Kubatura:	623 m ³
Powierzchnia zabudowy:	131.33 m ²
Powierzchnia całkowita:	219.53 m ²
Powierzchnia netto:	185.1 m ²
Powierzchnia użytkowa:	143.14 m ²
Wymiary domu:	15.21 x 10.65 m
Minimalne wymiary działki:	22.21 x 19.29 m
Wysokość do kalenicy:	8,13 m / 26,65 ft
Powierzchnia dachu:	226.8 m ²
Kąt nachylenia dachu:	42 degrees

Koszty realizacji:

Realizacja stanu surowego otwartego:	44 300
Realizacja stanu surowego zamkniętego:	66 700
Koszt robót wykończeniowych:	59 100
Realizacja domu pod klucz:	125 700

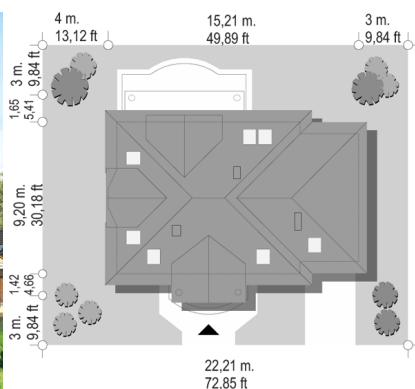
Koszty są podane w cenach netto, należy doliczyć podatek VAT

Materiały:

- Foundations - concrete
- External walls - bilayer wall aerated concrete 24 cm + polystyrene or mineral wool
- Ceiling - Teriva
- Roof - ceramic tile



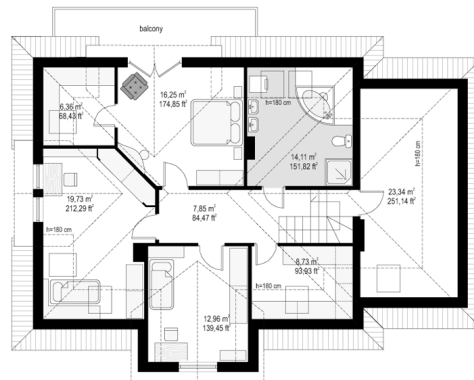
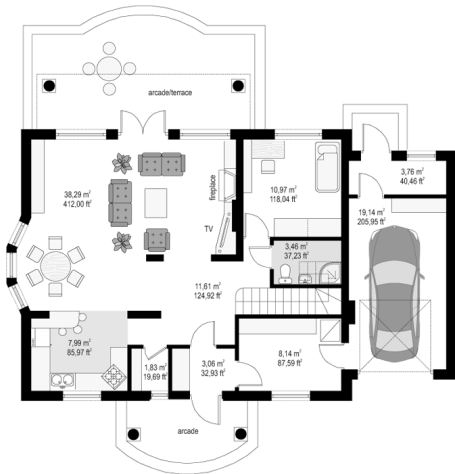
CENA PROJEKTU: 970.00 \$



	Energy-saving package	bezpł.
	Ventilation and fireplace package	90
	Central vacuum package	70
	The electronic version of the project	120
	Solar installation package	70
	Underfloor heating package	80
	Heat pump package	70
	Water jacket package	70
	Boiler for solid fuel package	80
	Air conditioning package	80
	Fencing projects	140
	Septic tanks sealed package	bezpł.

Saga house plan is a building of classic architecture, referring to the Polish manor house. This is a detached house for a family of 4-5 people. The project has a hipped roof attached to the dormer windows, the original entrance portico with columns and a circular window give the block a curious expression. Details - such as the dining room bay window, large balcony with arcade from the garden diversified whole. Inside the house was designed spacious living room with dining area accented by gentle bay window. House has large glazing which the interior opening to the terrace and garden. Partially open kitchen with hall increase the surface area. On the ground floor there also was designed an extra room, garage and boiler room. In the attic there are three bedrooms with wardrobes and a bathroom. In addition, the project gives the possibility of utilizing the attic above the garage for the room. There is also available mirror version of this house plan.

Rzuty:



Elewacje:

