

Dane techniczne:

Kubatura:	623 m ³
Powierzchnia zabudowy:	131.33 m ²
Powierzchnia całkowita:	219.53 m ²
Powierzchnia netto:	185.1 m ²
Powierzchnia użytkowa:	143.14 m ²
Wymiary domu:	15.21 x 10.65 m
Minimalne wymiary działki:	22.21 x 19.29 m
Wysokość do kalenicy:	8,13 m / 26,67 ft
Powierzchnia dachu:	226.8 m ²
Kąt nachylenia dachu:	42 degrees

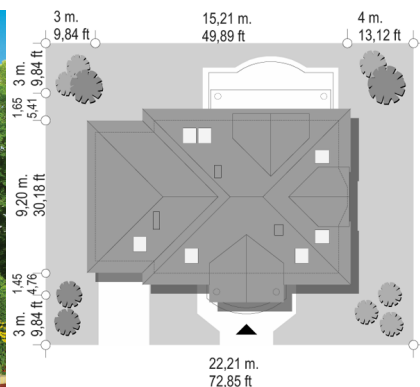
Koszty realizacji:

Realizacja stanu surowego otwartego:	42 700
Realizacja stanu surowego zamkniętego:	65 100
Koszt robót wykończeniowych:	65 700
Realizacja domu pod klucz:	130 800

Koszty są podane w cenach netto, należy doliczyć podatek VAT

Materiały:

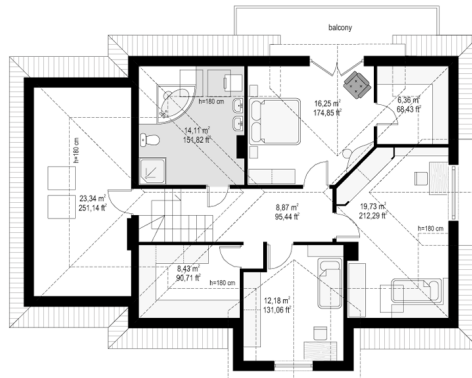
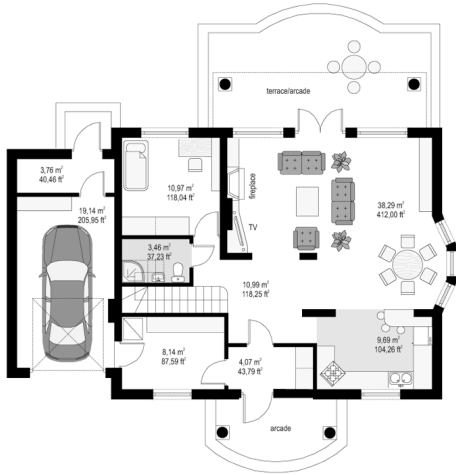
- Foundations - concrete bench and foundation walls with concrete blocks
- External walls - bilayer aerated concrete
- Ceiling - Teriva
- Roof - tile
- Elevation - thin-layer plaster

**CENA PROJEKTU: 1000.00 \$**

	Energy-saving package	bezpł.
	Ventilation and fireplace package	90
	Central vacuum package	70
	The electronic version of the project	120
	Solar installation package	70
	Underfloor heating package	80
	Heat pump package	70
	Water jacket package	70
	Boiler for solid fuel package	80
	Air conditioning package	80
	Fencing projects	140
	Septic tanks sealed package	bezpł.

Saga 2 house plan is a variant version of house Saga. Detached house for a family of 4-5 people, with classic architecture, which refers to the Polish manor house. Inside the building, like in the Saga has a large lounge with dining area accented by with extensive glazed bay window opening the interior to the patio and garden. The spacious, partially open kitchen with hall increase the surface area. On the ground floor was designed an extra room, garage and boiler room. In the attic there are three bedrooms with wardrobes and a bathroom. In house Saga 2 the attic above the garage can be exploited for the room. There is also available mirror version of this house plan.

Rzuty:



Elewacje:

