

Dane techniczne:

Kubatura:	357 m ³
Powierzchnia zabudowy:	85.06 m ²
Powierzchnia całkowita:	85.06 m ²
Powierzchnia netto:	64.96 m ²
Powierzchnia użytkowa:	62.75 m ²
Wymiary domu:	9.29 x 9.29 m
Minimalne wymiary działki:	17.29 x 17.29 m
Wysokość do kalenicy:	6,21 m / 20,37 ft
Powierzchnia dachu:	138.93 m ²
Kąt nachylenia dachu:	30 degrees

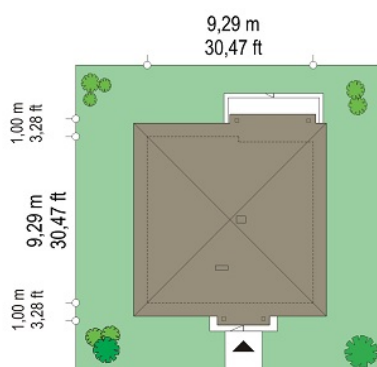
Koszty realizacji:

Realizacja stanu surowego otwartego:	24 700
Realizacja stanu surowego zamkniętego:	36 400
Koszt robót wykończeniowych:	33 000
Realizacja domu pod klucz:	69 400

Koszty są podane w cenach netto, należy doliczyć podatek VAT

Materiały:

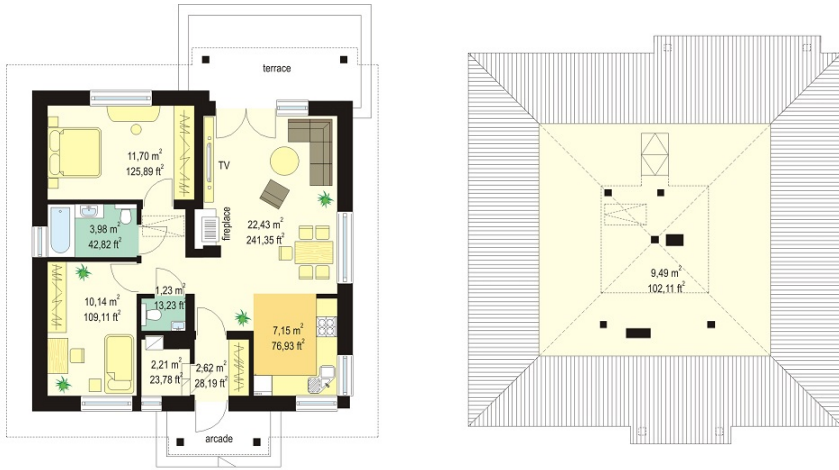
- Foundations - Concrete benches and foundation walls of concrete blocks
- External walls - brick walls - aerated concrete blocks 24 cm + polystyrene + thin-layer plaster
- Ceiling - Teriva
- Elevation - thin-layer plaster on polystyrene
- Roof - ceramic tile

**CENA PROJEKTU: 870.00 \$**

	Energy-saving package	bezpł.
	Ventilation and fireplace package	90
	Central vacuum package	70
	The electronic version of the project	120
	Solar installation package	70
	Underfloor heating package	80
	Heat pump package	70
	Water jacket package	70
	Boiler for solid fuel package	80
	Air conditioning package	80
	Fencing projects	140
	Septic tanks sealed package	bezpł.

Bambi house plan is a small, one -storey house for the family of 3 - 4 people. The building has a been covered by a hipped, envelope roof. Very simple body of building, based on a square plan and envelope roof, combined with a well-chosen proportions and interesting architectural details form a cohesive, attractive whole. Bambi house is easy to build, thanks to the compact body of building it is also inexpensive in heating. In this project the floor space was divided into an open living area with kitchen, living room and hall, and the night part with two bedrooms and a bathroom. From the living room wide patio doors lead to the terrace and garden. The terrace is partly covered. In the center of the house the fireplace was located, which alternatively can warm the entire interior. From the hall stairs lead to the big attic above the ground floor, which alternatively can be adapted to a small room in the attic. Bambi can be both a single-family house, but also can be summer. There is a mirror version of Bambi house plan.

Rzuty:



Elewacje:

