

Dane techniczne:

Kubatura:	724 m ³
Powierzchnia zabudowy:	149.89 m ²
Powierzchnia całkowita:	251.73 m ²
Powierzchnia netto:	215.73 m ²
Powierzchnia użytkowa:	164.18 m ²
Wymiary domu:	17.61 x 9.2 m
Minimalne wymiary działki:	24.61 x 19.26 m
Wysokość do kalenicy:	8,13 m / 26,67 ft
Powierzchnia dachu:	253.77 m ²
Kąt nachylenia dachu:	42 degrees

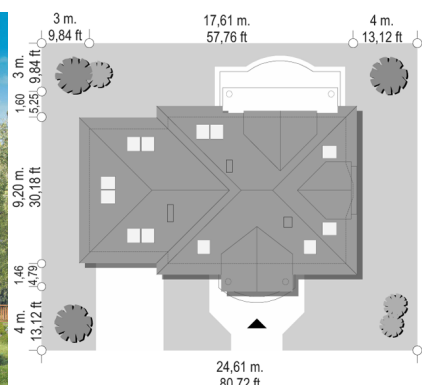
Koszty realizacji:

Realizacja stanu surowego otwartego:	47 000
Realizacja stanu surowego zamkniętego:	74 200
Koszt robót wykończeniowych:	72 100
Realizacja domu pod klucz:	146 200

Koszty są podane w cenach netto, należy doliczyć podatek VAT

Materiały:

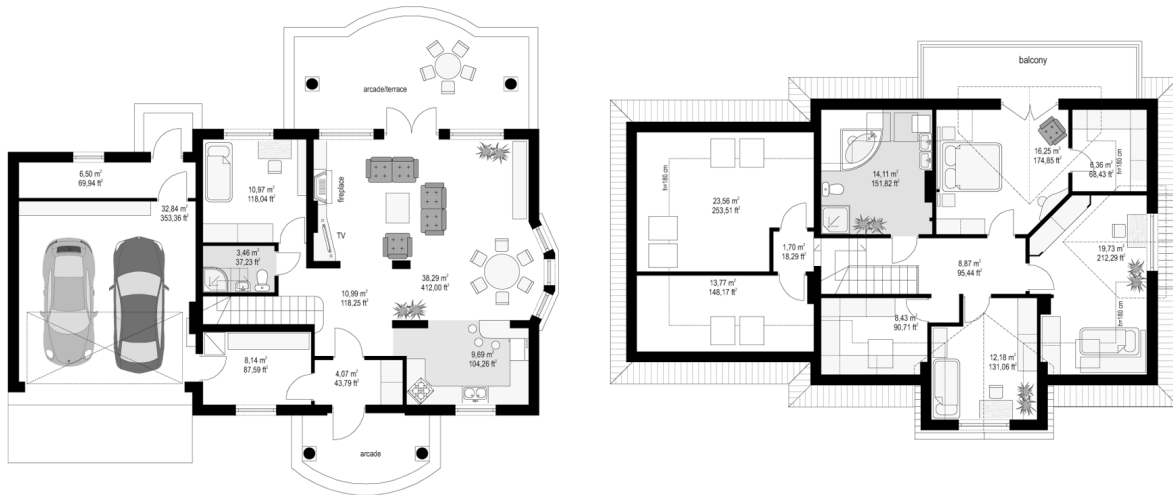
- Foundations - poured concrete
- External walls - brick walls - aerated concrete 24 + polystyrene or mineral wool + thin-layer plaster
- Ceiling - reinforced concrete Teriva
- Roof - tile or metal roofing tile
- Elevation - thin-layer plaster

**CENA PROJEKTU: 1040.00 \$**

	Energy-saving package	bezpl.
	Ventilation and fireplace package	90
	Central vacuum package	70
	The electronic version of the project	120
	Solar installation package	70
	Underfloor heating package	80
	Heat pump package	70
	Water jacket package	70
	Boiler for solid fuel package	80
	Air conditioning package	80
	Fencing projects	140
	Septic tanks sealed package	bezpl.

Saga 3 house plan, is the answer on request of many of our clients who wanted to see this house with a garage for two cars. Saga is very popular, however, some people abandon it due to a single garage. Now you can choose between projects Saga with a single and double garage. House has a very slim body, the main part of the building is covered with a hipped roof, with an elegant pediment supported by columns of input, and a lovely balcony and dormers from the garden. Built another wider garage has beneficial effect on proportions of house, Saga 3 looks even more dignified in this version. Interior of the house has not changed - the ground floor is a single-space living room, connected to the lobby, dining room and part with kitchen. On the ground floor was designed an extra room, bathroom and boiler room. In the double garage is a utility room. At the attic, by enlarging the space above the garage we fit four rooms with private bathroom, walk-in closets and an extra attic. There is also available mirror version of this house plan.

Rzuty:



Elewacje:

