

## Dane techniczne:

|                            |                       |
|----------------------------|-----------------------|
| Kubatura:                  | 1218 m <sup>3</sup>   |
| Powierzchnia zabudowy:     | 173.28 m <sup>2</sup> |
| Powierzchnia całkowita:    | 413.71 m <sup>2</sup> |
| Powierzchnia netto:        | 232.14 m <sup>2</sup> |
| Powierzchnia użytkowa:     | 215.41 m <sup>2</sup> |
| Wymiary domu:              | 12.9 x 15.53 m        |
| Minimalne wymiary działki: | 18.9 x 24.63 m        |
| Wysokość do kalenicy:      | 11,73 m / 38,47 ft    |
| Powierzchnia dachu:        | 301 m <sup>2</sup>    |
| Kąt nachylenia dachu:      | 40 degree             |

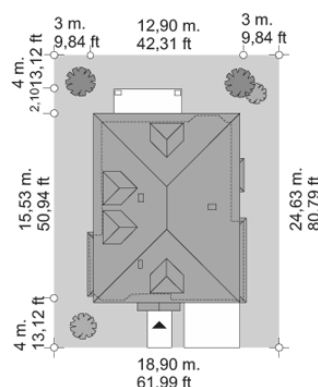
## Koszty realizacji:

|  |         |
|--|---------|
| Realizacja stanu surowego otwartego:   | 65 400  |
| Realizacja stanu surowego zamkniętego: | 94 200  |
| Koszt robót wykończeniowych:           | 93 600  |
| Realizacja domu pod klucz:             | 187 700 |

Koszty są podane w cenach netto, należy doliczyć podatek VAT

## Materiały:

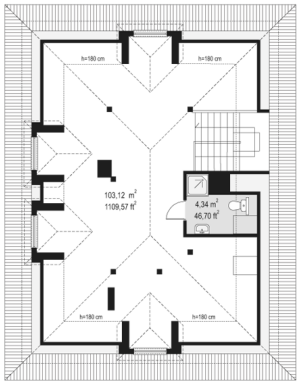
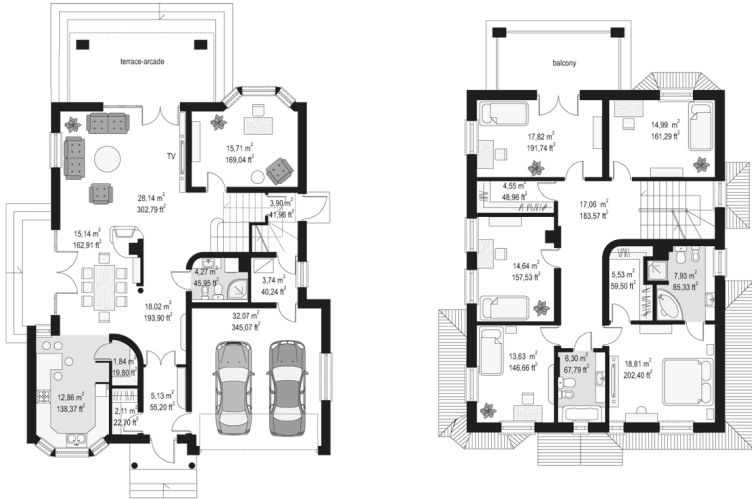
- Foundations - Concrete benches and foundation walls of concrete blocks
- External walls - bilayer: porotherm + wool
- Internal walls - porotherm
- Ceiling - Teriva
- Elevation - thin-layer plaster
- Roof - tile

**CENA PROJEKTU: 1250.00 \$**

|  |                                       |        |
|--|---------------------------------------|--------|
|  | Energy-saving package                 | bezpł. |
|  | Ventilation and fireplace package     | 90     |
|  | Central vacuum package                | 70     |
|  | The electronic version of the project | 120    |
|  | Solar installation package            | 70     |
|  | Underfloor heating package            | 80     |
|  | Heat pump package                     | 70     |
|  | Water jacket package                  | 70     |
|  | Boiler for solid fuel package         | 80     |
|  | Air conditioning package              | 80     |
|  | Fencing projects                      | 140    |
|  | Septic tanks sealed package           | bezpł. |

Agate house plan is particularly suited to small plots with a small possible building surface. Agate is a project of urban villa having architecture similar to prewar residence with classical details. The interior of house is an open living space on the ground floor and bedrooms on the first floor. The house has a large attic, which could serve as a utility attic. Noteworthy is in particular separate service entrance, which due to the proximity of the stairs can be used as a separate entrance to a separate apartment on the first floor. Agate house plan is also available in mirror versions.

## Rzuty:



## Elewacje:





MG Projekt Pracownia Architektoniczna s.c. ul. Uczniowska 14 03-112 Warszawa  
tel.: 22 676 66 83, 22 676 66 88, fax: 22 676 66 82, mob.: 600 392 884,  
tylko przedstawiciele 606 200 136, [www.mgprojekt.com.pl](http://www.mgprojekt.com.pl),  
[mgprojekt@mgprojekt.com.pl](mailto:mgprojekt@mgprojekt.com.pl)

MG Projekt