

## Dane techniczne:

Kubatura:	962 m <sup>3</sup>
Powierzchnia zabudowy:	199.12 m <sup>2</sup>
Powierzchnia całkowita:	324.09 m <sup>2</sup>
Powierzchnia netto:	273.74 m <sup>2</sup>
Powierzchnia użytkowa:	213.45 m <sup>2</sup>
Wymiary domu:	21.23 x 12.2 m
Minimalne wymiary działki:	28.23 x 20.2 m
Wysokość do kalenicy:	8,41 m / 27,59 ft
Powierzchnia dachu:	371 m <sup>2</sup>
Kąt nachylenia dachu:	36 degrees

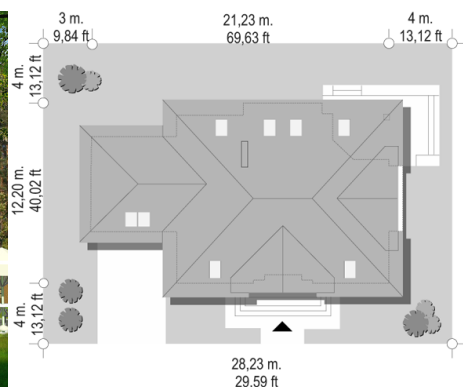
## Koszty realizacji:

Realizacja stanu surowego otwartego:	56 800
Realizacja stanu surowego zamkniętego:	85 900
Koszt robót wykończeniowych:	85 100
Realizacja domu pod klucz:	170 900

Koszty są podane w cenach netto, należy doliczyć podatek VAT

## Materiały:

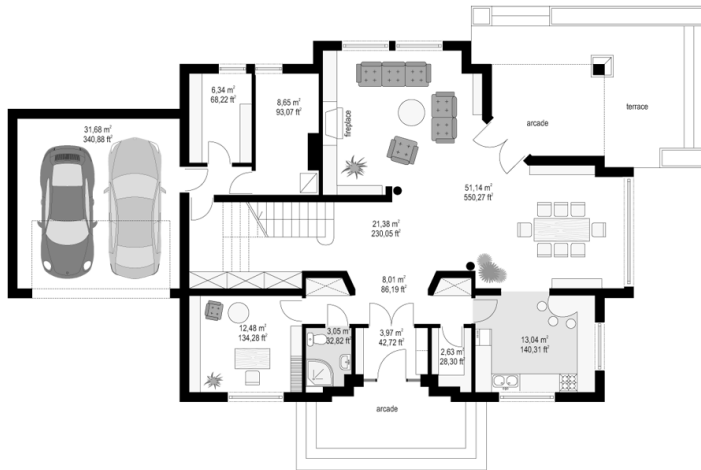
- Foundations - poured concrete
- External walls - aerated concrete 24or brick blocks of porotherm 25 or U220 + polystyrene 12 cm
- Ceiling - reinforced concrete Teriva
- Elevation - thin-layer plaster on polystyrene
- Roof - ceramic tile, metal roofing tile

**CENA PROJEKTU: 1110.00 \$**

	Energy-saving package	bezpł.
	Ventilation and fireplace package	90
	Central vacuum package	70
	The electronic version of the project	120
	Solar installation package	70
	Underfloor heating package	80
	Heat pump package	70
	Water jacket package	70
	Boiler for solid fuel package	80
	Air conditioning package	80
	Fencing projects	140
	Septic tanks sealed package	bezpł.

Benedict house plan is a large, elegant family house referring to the residence architecture - but in more modern terms. Broad, centrally located home entrance emphasize axial division of the front facade. The body of building was covered with large, hip roof, interesting dormer windows cut by great balconies. Inside the Benedict house a large lobby with a lounge, separate dining room and a large lockable kitchen was planned. On the ground floor there is a study and a technical room and a garage for two cars. In the attic you can find the parents' bedroom with its own dressing room and bathroom as well as three children bedrooms and a bathroom. In this house plan the attic above the garage can be adapted for additional storage room. We have also a mirror version of this project. There is also a version of the Benedict house plan with the facade on the columns instead of the balcony.

## Rzuty:



## Elewacje:

