

## Dane techniczne:

Kubatura:	193 m <sup>3</sup>
Powierzchnia zabudowy:	44.07 m <sup>2</sup>
Powierzchnia całkowita:	67.55 m <sup>2</sup>
Powierzchnia netto:	53.43 m <sup>2</sup>
Powierzchnia użytkowa:	53.43 m <sup>2</sup>
Wymiary domu:	7.8 x 5.65 m
Minimalne wymiary działki:	15.8 x 13.65 m
Wysokość do kalenicy:	6,56 m / 21,52 ft
Powierzchnia dachu:	96.96 m <sup>2</sup>
Kąt nachylenia dachu:	45 degrees

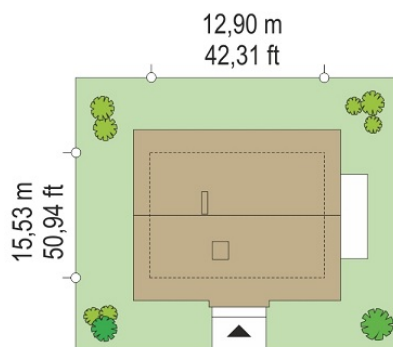
## Koszty realizacji:

Realizacja stanu surowego otwartego:	10 800
Realizacja stanu surowego zamkniętego:	18 100
Koszt robót wykończeniowych:	24 100
Realizacja domu pod klucz:	42 100

Koszty są podane w cenach netto, należy doliczyć podatek VAT

## Materiały:

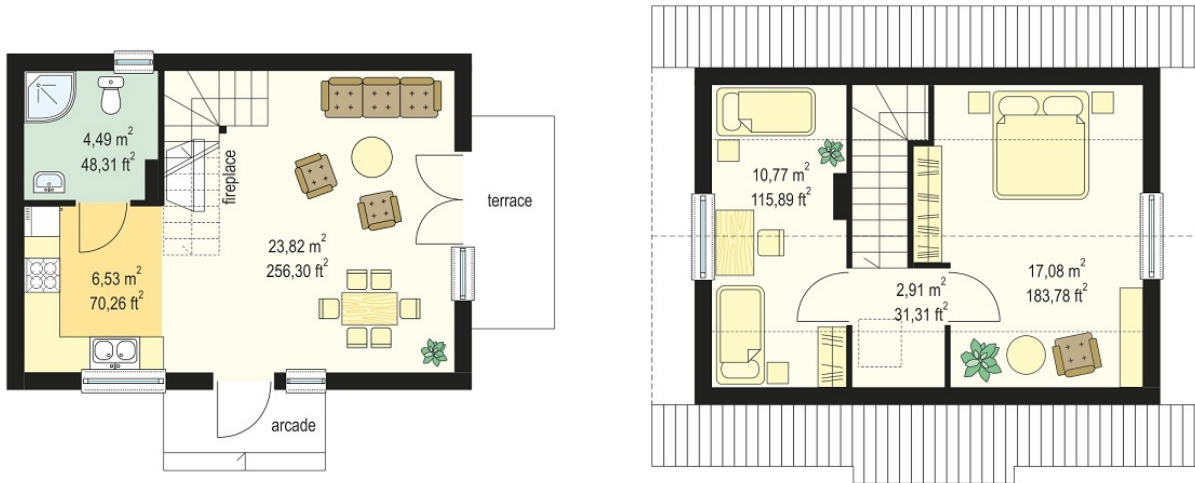
- Foundations - monolithic concrete
- External walls - aerated concrete + polystyrene or wooden skeleton
- Interior walls - aerated concrete or wooden
- Ceiling - wooden
- Elevation - thin-layer plaster or shutter
- Roof - tile or metal roofing tile

**CENA PROJEKTU: 820.00 \$**

	Energy-saving package	bezpł.
	Ventilation and fireplace package	90
	Central vacuum package	70
	The electronic version of the project	120
	Air conditioning package	80
	Fencing projects	140
	Septic tanks sealed package	bezpł.

Pine house plan is a small, shapely house, which could serve as a holiday or a year-round house. Its advantages are the right proportions, fit the esthetic appearance of the building, functional interior and a simple, inexpensive in build construction. We have developed several versions of the Pine house plan: increased by 1 meter, with a later extension of a garage or carport, with a porch entrance, with a balcony and an arcade above the terrace, or with utility room. We have this house in the versions of brick and frame technology. Pine house plan is also available in the mirror.

## Rzuty:



## Elewacje:

