

## Dane techniczne:

Kubatura:	259 m <sup>3</sup>
Powierzchnia zabudowy:	52.39 m <sup>2</sup>
Powierzchnia całkowita:	80.22 m <sup>2</sup>
Powierzchnia netto:	63.51 m <sup>2</sup>
Powierzchnia użytkowa:	58.33 m <sup>2</sup>
Wymiary domu:	8.8 x 6.65 m
Minimalne wymiary działki:	16.8 x 14.65 m
Wysokość do kalenicy:	6,68 m / 21,91 ft
Powierzchnia dachu:	106.6 m <sup>2</sup>
Kąt nachylenia dachu:	45 degrees

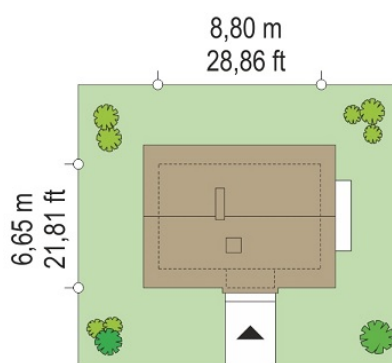
## Koszty realizacji:

Realizacja stanu surowego otwartego:	12 300
Realizacja stanu surowego zamkniętego:	21 200
Koszt robót wykończeniowych:	30 700
Realizacja domu pod klucz:	51 900

Koszty są podane w cenach netto, należy doliczyć podatek VAT

## Materiały:

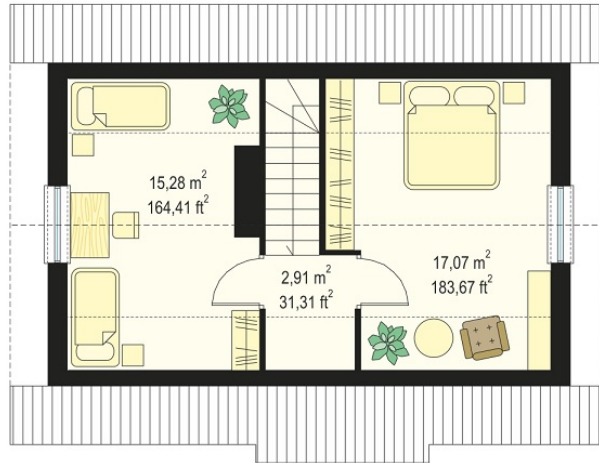
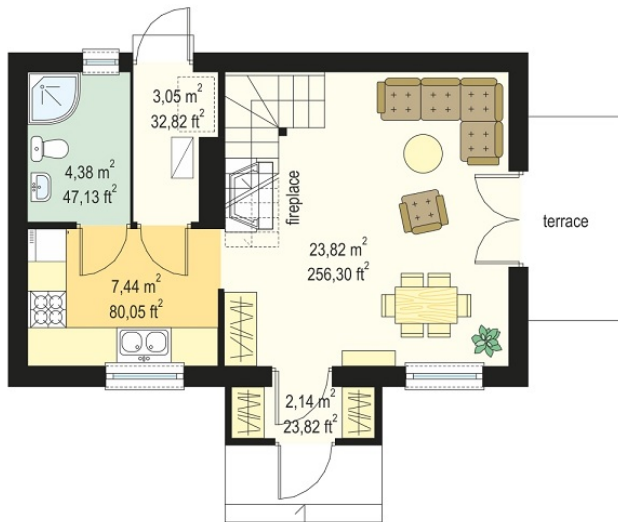
- Foundations - concrete bench and foundation walls with concrete blocks
- External walls - aerated concrete + foamed polystyrene
- Interior walls - aerated concrete
- Ceiling - wooden beams
- Roof - tile
- Elevation - thin-layer plaster

**CENA PROJEKTU: 870.00 \$**

	Energy-saving package	bezpł.
	Ventilation and fireplace package	90
	Central vacuum package	70
	The electronic version of the project	120
	Solar installation package	70
	Underfloor heating package	80
	Heat pump package	70
	Water jacket package	70
	Boiler for solid fuel package	80
	Air conditioning package	80
	Fencing projects	140
	Septic tanks sealed package	bezpł.

Pine 3 house plan is the next version of the Pine house. This is single-family house can be a holiday or year-round house. This time, we present a house with a porch entrance, and a utility room with a separate entrance. Pine 3 house is suitable for heating boiler or fireplace. On the ground floor there is a living room with stairs, fireplace, exit to the terrace, a kitchen and a bathroom. On the top floor there are two bedrooms of similar size. Thanks to the simple construction house is easy and inexpensive to build. House will perfectly fulfill the role of holiday house or a small family house. We have a mirror version of the Pine 3 house plan.

## Rzuty:



## Elewacje:

