

Dane techniczne:

Kubatura:	1382 m ³
Powierzchnia zabudowy:	174.25 m ²
Powierzchnia całkowita:	451.38 m ²
Powierzchnia netto:	220.47 m ²
Powierzchnia użytkowa:	218.98 m ²
Wymiary domu:	14.3 x 14.05 m
Minimalne wymiary działki:	21.3 x 22.05 m
Wysokość do kalenicy:	9,80 m / 32,14 ft
Powierzchnia dachu:	215.13 m ²
Kąt nachylenia dachu:	35 i 27,5 degrees

Koszty realizacji:

Realizacja stanu surowego otwartego:	88 300
Realizacja stanu surowego zamkniętego:	116 900
Koszt robót wykończeniowych:	128 600
Realizacja domu pod klucz:	245 500

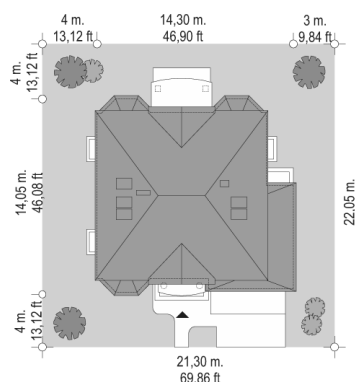
Koszty są podane w cenach netto, należy doliczyć podatek VAT

Materiały:

- Foundations - poured concrete
- External walls - brick walls - porotherm 25 blocks + 15 mineral wool
- Ceiling - reinforced concrete Teriva
- Roof - tile
- Elevation - thin-layer plaster



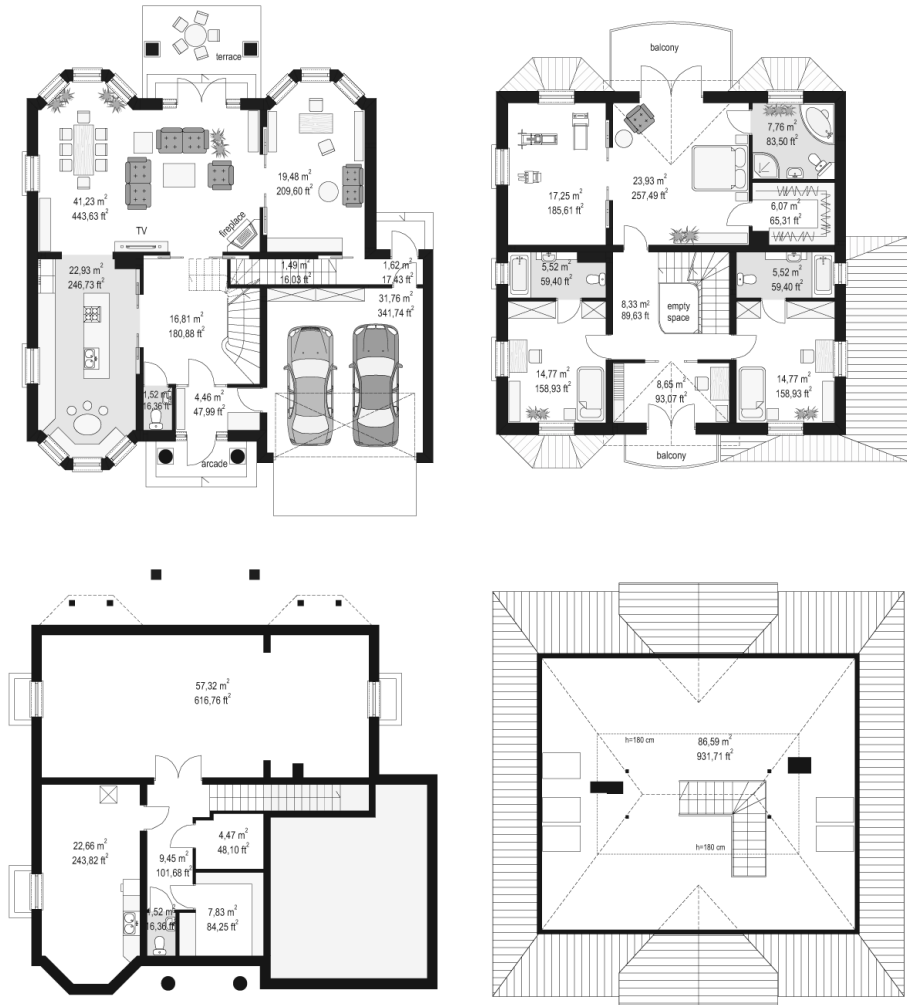
CENA PROJEKTU: 1250.00 \$



	Energy-saving package	bezpł.
	Ventilation and fireplace package	90
	Central vacuum package	70
	The electronic version of the project	120
	Solar installation package	70
	Underfloor heating package	80
	Heat pump package	70
	Water jacket package	70
	Boiler for solid fuel package	80
	Air conditioning package	80
	Fencing projects	140
	Septic tanks sealed package	bezpł.

Stylish house plan is a charming detached house, in a series of our storey buildings. This time with a little less space - unless not counting the basement. Is designed for a family of 4-6 people. Stylish was designed on the plan close to a square, with garage built another to the main block the house. Bay windows, balconies on the columns (entrance and garden), pediments, or arc terminated beautiful windows with divisions. It all gives the house a nice classical appearance. Inside the apartment has been also traditionally divided symmetrically and with visual axes. From the central hall with stairs we go to a large living room, or to a truly great kitchen - with the island and dining area. From the living room we can go to the office-library (library can be simply connected with the living room). An interesting solution in the project is the ability to access the basement stairs from two parts: technical from the garage and from the living area (part of the basement is designed for recreation). On the first floor of the Stylish was designed the parents apartment - with bathroom, dressing room, garden terrace and additional room (e. g. for fitness), and two children's bedrooms with bathrooms. Additional room can be used for an extra bedroom providing with the entrance from the lobby. There is also a small room to work - office (combined with glass walls of the hall and having exit to the front balcony). In the basement was designed the technical rooms and leisure facilities. The house has a large attic, which can also be adapted. There is also available mirror version of this house plan.

Rzuty:



Elewacje:



