

Dane techniczne:

Kubatura:	811 m ³
Powierzchnia zabudowy:	179.08 m ²
Powierzchnia całkowita:	281.34 m ²
Powierzchnia netto:	194.52 m ²
Powierzchnia użytkowa:	183.06 m ²
Wymiary domu:	20.14 x 11.34 m
Minimalne wymiary działki:	27.14 x 19.34 m
Wysokość do kalenicy:	8,38 m / 27,49 ft
Powierzchnia dachu:	301 m ²
Kąt nachylenia dachu:	38 degrees

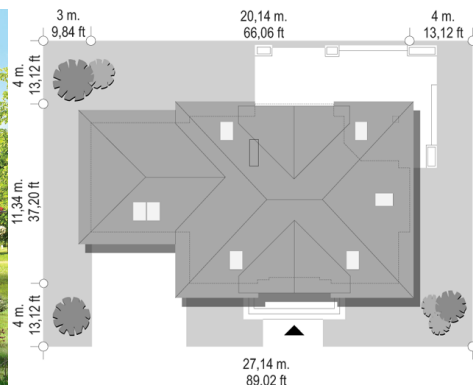
Koszty realizacji:

Realizacja stanu surowego otwartego:	53 400
Realizacja stanu surowego zamkniętego:	76 800
Koszt robót wykończeniowych:	73 000
Realizacja domu pod klucz:	149 800

Koszty są podane w cenach netto, należy doliczyć podatek VAT

Materiały:

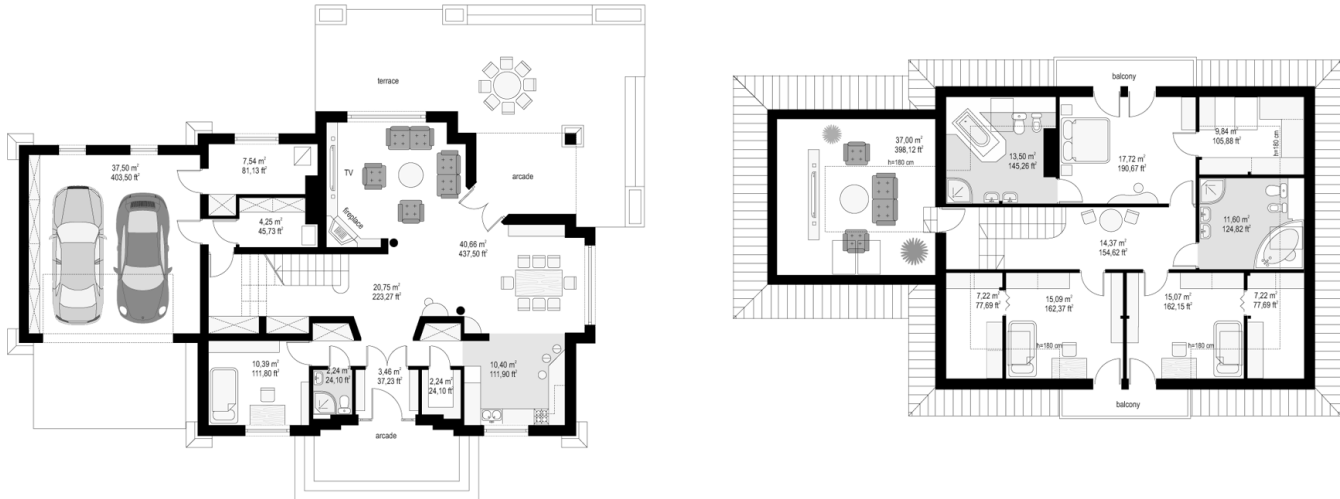
- Foundations - Concrete
- Bilayer walls - max or porotherm + wool (polystyrene)
- Ceiling - Teriva
- Roof - ceramic tile or metal roofing tile

**CENA PROJEKTU: 1070.00 \$**

	Energy-saving package	bezpł.
	Ventilation and fireplace package	90
	Central vacuum package	70
	The electronic version of the project	120
	Solar installation package	70
	Underfloor heating package	80
	Heat pump package	70
	Water jacket package	70
	Boiler for solid fuel package	80
	Air conditioning package	80
	Fencing projects	140
	Septic tanks sealed package	bezpł.

Benedict 2 is the family, one-storey house, with an attic covered by the hip roof with wide dormers. Architecture of Benedict 2 refers to a traditional Polish residence house, in the modern terms. Balconies, arched windows and large windows opening the living room to the garden, bay windows and corners of walls decorated with buttresses all this gives a harmonious, aesthetic, representative and welcoming body of building. The interior of the house is a large living room with a separate area for dining, semi-open kitchen, spacious hall with comfortable stairs, extra room and technical facilities of the garage. At the attic the children's bedrooms with dressing room and parents apartment with a separate bathroom was designed. In this house plan there is also possible to adapt the attic above the garage.m.

Rzuty:



Elewacje:

