

Dane techniczne:

Kubatura:	553 m ³
Powierzchnia zabudowy:	121.97 m ²
Powierzchnia całkowita:	199.46 m ²
Powierzchnia netto:	135.74 m ²
Powierzchnia użytkowa:	124.32 m ²
Wymiary domu:	13.95 x 9.58 m
Minimalne wymiary działki:	17.95 x 17.58 m
Wysokość do kalenicy:	7,50 m / 24,6 ft
Powierzchnia dachu:	197.31 m ²
Kąt nachylenia dachu:	38 i 32 degrees

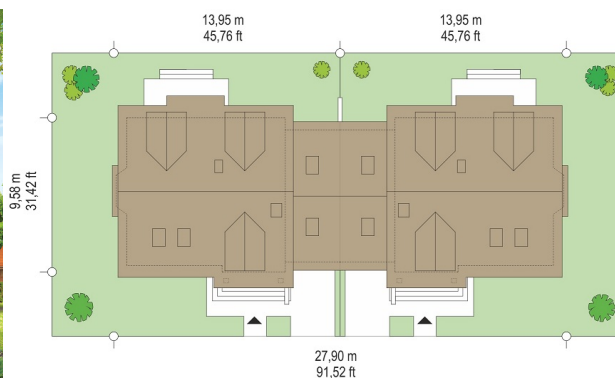
Koszty realizacji:

Realizacja stanu surowego otwartego:	40 600
Realizacja stanu surowego zamkniętego:	58 400
Koszt robót wykończeniowych:	64 400
Realizacja domu pod klucz:	122 800

Koszty są podane w cenach netto, należy doliczyć podatek VAT

Materiały:

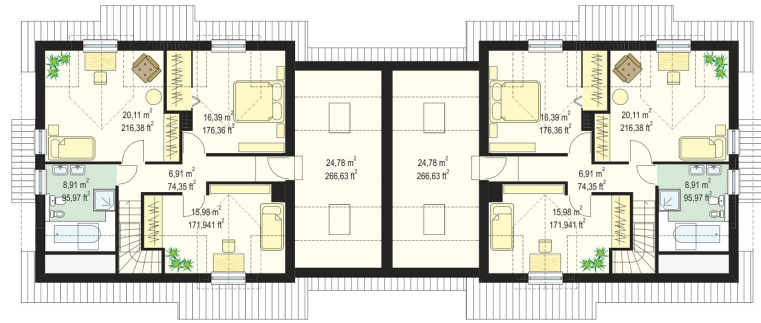
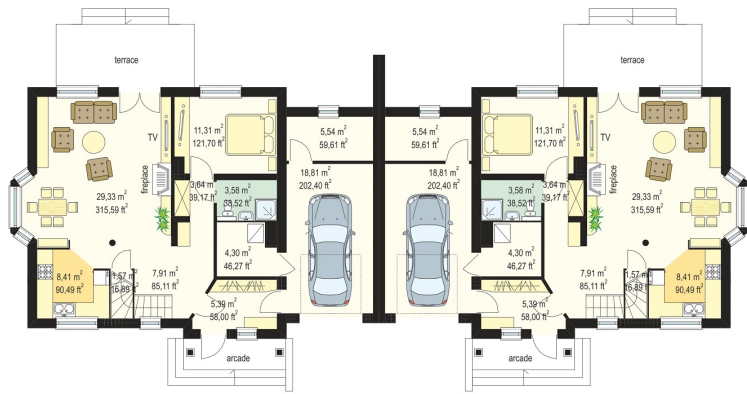
- Foundations - poured concrete
- External walls - brick walls - aerated concrete 24 + polystyrene or mineral wool + thin-layer plaster
- Ceiling - reinforced concrete Teriva
- Roof - tile or metal roofing tile
- Elevation - thin-layer plaster

**CENA PROJEKTU: 1250.00 \$**

	Energy-saving package	bezpł.
	Ventilation and fireplace package	90
	Central vacuum package	70
	The electronic version of the project	120
	Solar installation package	70
	Underfloor heating package	80
	Heat pump package	70
	Water jacket package	70
	Boiler for solid fuel package	80
	Air conditioning package	80
	Fencing projects	140
	Septic tanks sealed package	bezpł.

House plan Squall is another project from our series "sea pearls" (see: Breeze and Cliff). This time, a very successful form of the house and the interior we managed to compose as twin building. Two identical half of the building are combined with garages. Squall house plan is a peaceful form - covered by a gable roof, diversified by dormers and extensions of arcades roofs. The simple shape of the building and uncomplicated construction facilitate built and reduce the cost of execution. The interior of house Squall is designed to provide maximum functional. On the ground floor is a living room with a dining area connected to the hall, partially open kitchen, and an extra room - which could serve as a bedroom or e.g. study. In the attic are planned three comfortable bedrooms. Built another garage with utility room and boiler room on the ground floor crowned the attic. It is possible to adapt the utility room, for example an extra room. There is also available mirror version of this house plan

Rzuty:



Elewacje:

