

# 256.9 m<sup>2</sup>

# For three generations

## Dane techniczne:

Kubatura:	976 m <sup>3</sup>
Powierzchnia zabudowy:	267.98 m <sup>2</sup>
Powierzchnia całkowita:	344.91 m <sup>2</sup>
Powierzchnia netto:	256.9 m <sup>2</sup>
Powierzchnia użytkowa:	256.9 m <sup>2</sup>
Wymiary domu:	25.79 x 17.35 m
Minimalne wymiary działki:	32.79 x 25.35 m
Wysokość do kalenicy:	6,71 m / 22,01 ft
Powierzchnia dachu:	403.52 m <sup>2</sup>
Kąt nachylenia dachu:	30 degrees

## Koszty realizacji:

Realizacja stanu surowego otwartego:	58 600
Realizacja stanu surowego zamkniętego:	91 200
Koszt robót wykończeniowych:	93 200
Realizacja domu pod klucz:	184 400

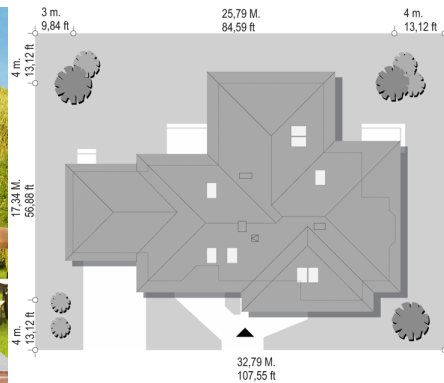
Koszty są podane w cenach netto, należy doliczyć podatek VAT

## Materiały:

- Foundations - monolithic concrete
- External walls - aerated concrete + polystyrene
- Internal walls - aerated concrete
- Ceiling - reinforced concrete Teriva
- Elevation - thin-layer plaster
- Roof - tile or meatal roofing tile



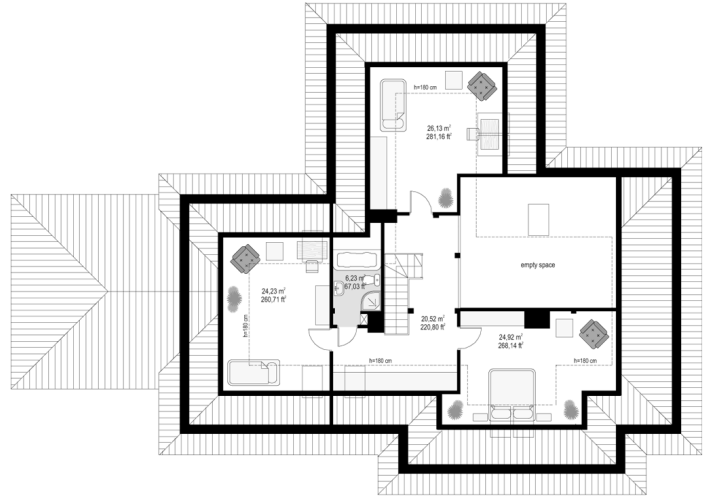
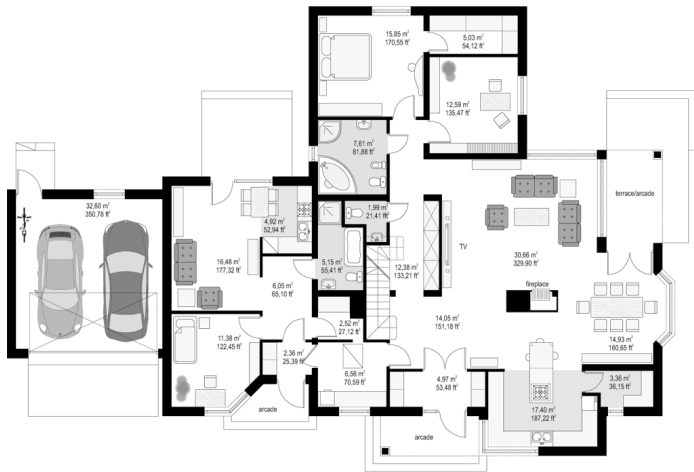
**CENA PROJEKTU: 1250.00 \$**



	Energy-saving package	bezpł.
	Ventilation and fireplace package	90
	Central vacuum package	70
	The electronic version of the project	120
	Solar installation package	70
	Underfloor heating package	80
	Heat pump package	70
	Water jacket package	70
	Boiler for solid fuel package	80
	Air conditioning package	80
	Fencing projects	140
	Septic tanks sealed package	bezpł.

For three generations house plan an extensive house. The house is designed for large, three-generation family. It includes a separate apartment for grandparents or adult children. Separate apartment can also serve as a studio or office. For three generations house plan was designed so that residents have maximum contact with the garden by large glazing and doors to the surrounding terraces. On the ground floor in addition to the living area is parents' bedroom, while in the attic is planned children bedrooms. Living room has been heightened by emptiness and a mezzanine in the attic. In a separate wing of the house is an independent apartment and a garage for two cars. House is also available in a version without a covered terrace and in the mirror version.

## Rzuty:



## Elewacje:

