

Dane techniczne:

Kubatura:	894 m ³
Powierzchnia zabudowy:	193.13 m ²
Powierzchnia całkowita:	320.34 m ²
Powierzchnia netto:	265.6 m ²
Powierzchnia użytkowa:	209.43 m ²
Wymiary domu:	19.23 x 12.2 m
Minimalne wymiary działki:	26.23 x 20.2 m
Wysokość do kalenicy:	8,41 m / 27,58 ft
Powierzchnia dachu:	352 m ²
Kąt nachylenia dachu:	36 i 38 degrees

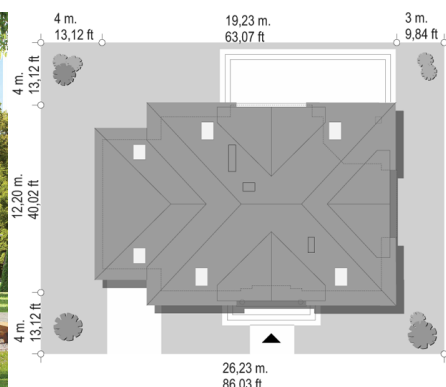
Koszty realizacji:

Realizacja stanu surowego otwartego:	56 300
Realizacja stanu surowego zamkniętego:	84 800
Koszt robót wykończeniowych:	79 700
Realizacja domu pod klucz:	164 500

Koszty są podane w cenach netto, należy doliczyć podatek VAT

Materiały:

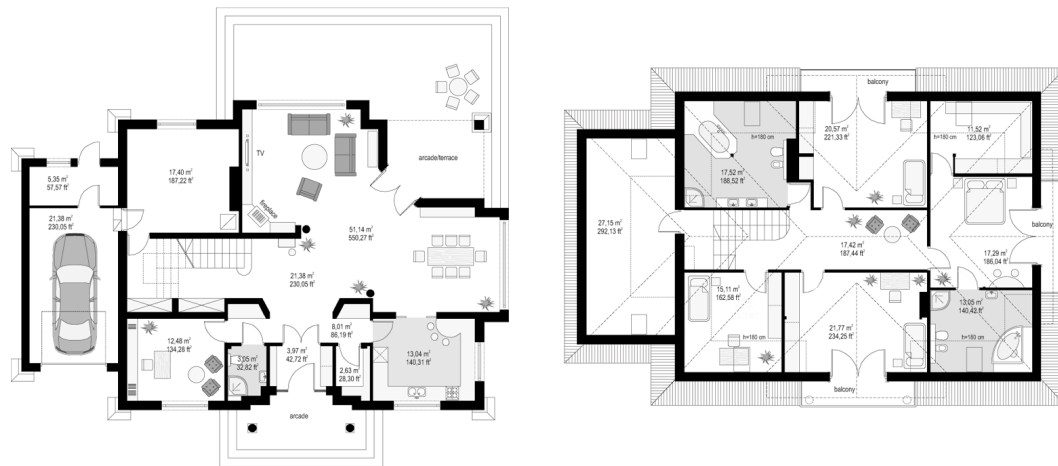
- Foundations - Concrete
- Bilayer walls - aerated concrete + mineral wool or polystyrene
- Ceiling - Teriva
- Roof - ceramic tile

**CENA PROJEKTU: 1070.00 \$**

	Energy-saving package	bezpł.
	Ventilation and fireplace package	90
	Central vacuum package	70
	The electronic version of the project	120
	Solar installation package	70
	Underfloor heating package	80
	Heat pump package	70
	Water jacket package	70
	Boiler for solid fuel package	80
	Air conditioning package	80
	Fencing projects	140
	Septic tanks sealed package	bezpł.

Benedict 3 house plan is a variant version of Benedict. This is a comfortable family house, designed on a rectangular plan, covered by a hip roof with dormers. This is perfect house for a family of 4 - 6 people. On the ground floor besides the living room with dining room and an extra room and large boiler - laundry room was designed. The living room opens into a terrace by a wide glazing and by a quite arcade. There are three bedrooms on the attic, one with private bathroom and dressing room, extra room that could be e.g. a guest bedroom and a room over the garage. There is also a mirror version of Benedict 3 house plan.

Rzuty:



Elewacje:

