

## Dane techniczne:

Kubatura:	418 m <sup>3</sup>
Powierzchnia zabudowy:	126.4 m <sup>2</sup>
Powierzchnia całkowita:	126.4 m <sup>2</sup>
Powierzchnia netto:	84.07 m <sup>2</sup>
Powierzchnia użytkowa:	81.21 m <sup>2</sup>
Wymiary domu:	11.98 x 12.24 m
Minimalne wymiary działki:	18.98 x 20.57 m
Wysokość do kalenicy:	5,08 m / 16,66 ft
Powierzchnia dachu:	176.3 m <sup>2</sup>
Kąt nachylenia dachu:	24 degrees

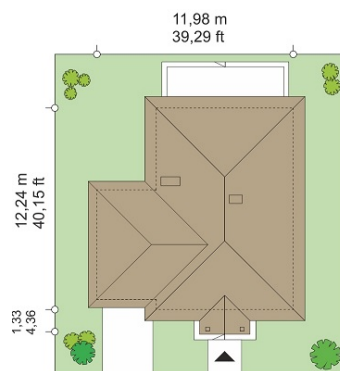
## Koszty realizacji:

Realizacja stanu surowego otwartego:	21 600
Realizacja stanu surowego zamkniętego:	35 700
Koszt robót wykończeniowych:	41 200
Realizacja domu pod klucz:	76 900

Koszty są podane w cenach netto, należy doliczyć podatek VAT

## Materiały:

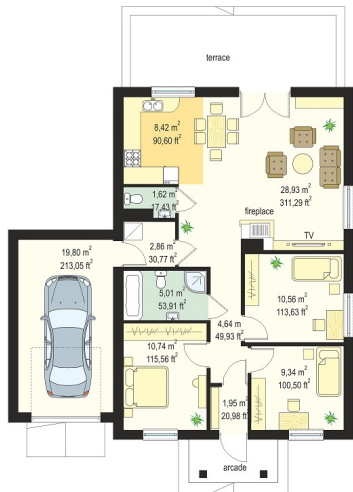
- Foundations - concrete bench and foundation walls with concrete blocks
- External walls - aerated concrete 24 cm + foamed polystyrene + thin-layer plaster
- Ceiling - wooden truss
- Elevation - thin-layer plaster on polystyrene
- Roof - tile

**CENA PROJEKTU: 900.00 \$**

	Energy-saving package	bezpł.
	Ventilation and fireplace package	90
	Central vacuum package	70
	The electronic version of the project	120
	Solar installation package	70
	Underfloor heating package	80
	Heat pump package	70
	Water jacket package	70
	Boiler for solid fuel package	80
	Air conditioning package	80
	Fencing projects	140
	Septic tanks sealed package	bezpł.

Tyke 2 house plan is suitable house for a family of four people. House is built on a rectangular plan and covered by a hipped roof, it has built another garage. It is a house suitable for on a narrow plot. Thanks to entrance from the narrow end, house together with garage fit perfectly to 19 meters plot. Inside house on a small area managed to design a comfortable, four-room apartment with a technical background, consisting of: a spacious living room with kitchen, three bedrooms, bathroom, toilet and boiler room. In the living room were designed central fireplace and wide glass door to the garden terrace. From the kitchen window you can also enjoy the garden and terrace. From the outside, house refers to the architecture of mansions, in the modern sense. Entrance porch on small columns, window shutters, or rusticated corners - all these elements fit perfectly into the gentle hipped roof. There is also available mirror version of this house plan.

## Rzuty:



## Elewacje:

