

Dane techniczne:

Kubatura:	1742 m ³
Powierzchnia zabudowy:	401.2 m ²
Powierzchnia całkowita:	596.68 m ²
Powierzchnia netto:	437.15 m ²
Powierzchnia użytkowa:	414.96 m ²
Wymiary domu:	20.03 x 30.53 m
Minimalne wymiary działki:	29.67 x 38.53 m
Wysokość do kalenicy:	9,37 m / 30,73 ft
Powierzchnia dachu:	516.11 m ²
Kąt nachylenia dachu:	30 degrees

Koszty realizacji:

Realizacja stanu surowego otwartego:	110 100
Realizacja stanu surowego zamkniętego:	158 900
Koszt robót wykończeniowych:	136 300
Realizacja domu pod klucz:	295 100

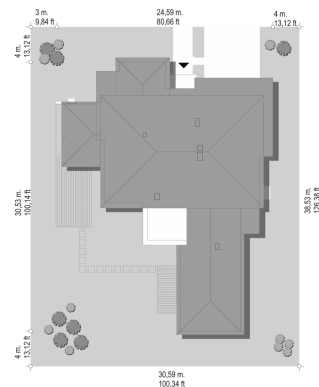
Koszty są podane w cenach netto, należy doliczyć podatek VAT

Materiały:

- Foundations - concrete bench and foundation walls with concrete blocks
- External walls - aerated concrete + polystyrene + thin-layer plaster
- Ceiling - monolithic plate
- Roof - tile
- Elevation - thin-layer plaster on polystyrene



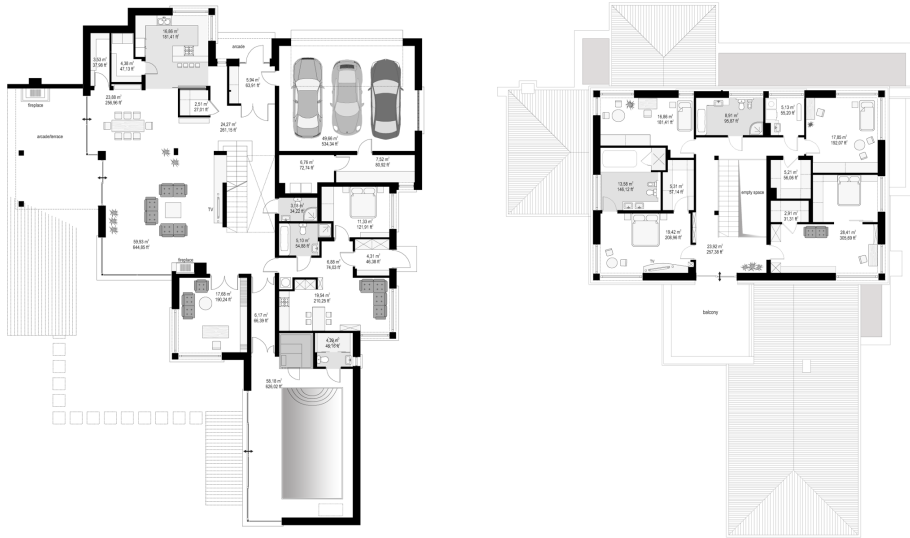
CENA PROJEKTU: 2380.00 \$



	Energy-saving package	bezpł.
	Ventilation and fireplace package	90
	Central vacuum package	70
	The electronic version of the project	120
	Solar installation package	70
	Underfloor heating package	80
	Heat pump package	70
	Water jacket package	70
	Boiler for solid fuel package	80
	Air conditioning package	80
	Fencing projects	140
	Septic tanks sealed package	bezpł.

Villa with pool is a large residence for a family of four-of six people. House consists of a compact, one-storey body covered by a hipped roof, built-on two blocks, covered by a hipped roofs. Building is a suburban villa with modern but quiet architecture. Design of the house is interesting thanks to build another garage, large roofed arcade and separate room at the back of the villa. Body of the building has been interestingly decorated by clinker and wooden cladding elevation, loggias and entrance arcades. Massive ornate chimney of internal and external fireplace, and corner windows are additional decorations of solid. On the ground floor for by a wide glazing from living room exit to the large arcade and garden terrace was planned. All elements of the elevation form a cohesive, peaceful in composition whole. There is also available mirror version of this house plan.

Rzuty:



Elewacje:



MG Projekt Pracownia Architektoniczna s.c. ul. Uczniowska 14 03-112 Warszawa
tel.: 22 676 66 83, 22 676 66 88, fax: 22 676 66 82, mob.: 600 392 884,
tylko przedstawiciele 606 200 136, www.mgprojekt.com.pl,
mgprojekt@mgprojekt.com.pl

MG Projekt