

Dane techniczne:

Kubatura:	907 m ³
Powierzchnia zabudowy:	196.37 m ²
Powierzchnia całkowita:	291.38 m ²
Powierzchnia netto:	241.74 m ²
Powierzchnia użytkowa:	182.32 m ²
Wymiary domu:	17.99 x 13.44 m
Minimalne wymiary działki:	24.99 x 21.44 m
Wysokość do kalenicy:	7,90 m / 25,91 ft
Powierzchnia dachu:	294.09 m ²
Kąt nachylenia dachu:	35 degrees

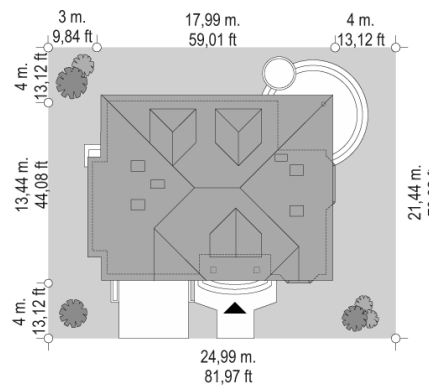
Koszty realizacji:

Realizacja stanu surowego otwartego:	55 700
Realizacja stanu surowego zamkniętego:	83 500
Koszt robót wykończeniowych:	81 600
Realizacja domu pod klucz:	165 000

Koszty są podane w cenach netto, należy doliczyć podatek VAT

Materiały:

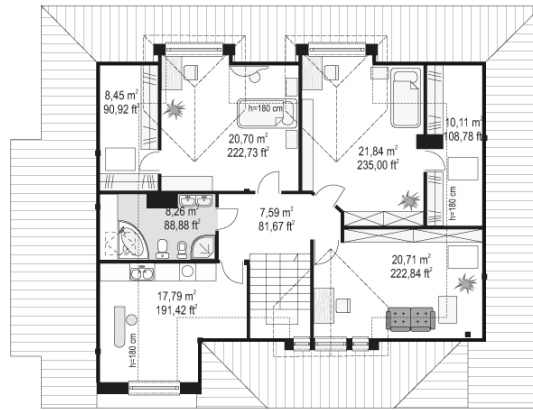
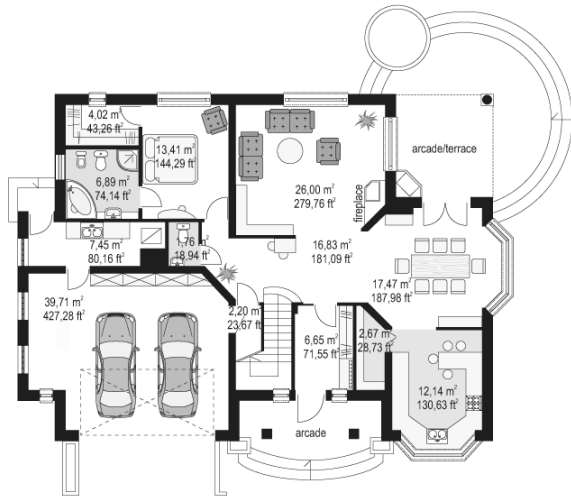
- Foundations - poured reinforced concrete
- External walls - bilayer wall porotherm 25 + 15 wool (or polystyrene) + thin-layer plaster or aerated concrete + polystyrene
- Ceiling - reinforced concrete Teriva
- Elevation - thin-layer plaster
- Roof - tile or meatal roofing tile

**CENA PROJEKTU: 1110.00 \$**

	Energy-saving package	bezpł.
	Ventilation and fireplace package	90
	Central vacuum package	70
	The electronic version of the project	120
	Solar installation package	70
	Underfloor heating package	80
	Heat pump package	70
	Water jacket package	70
	Boiler for solid fuel package	80
	Air conditioning package	80
	Fencing projects	140
	Septic tanks sealed package	bezpł.

Seclusion 2 is a single-family house for a family of five people. It is house with an attractive, spreading block of mild hipped roof with large dormers. There is also an extensive front arcade and a covered terrace with a fireplace, which from the garden side protect against rain or too harsh sun. In the kitchen and dining room designed bay windows, columns and wooden entablature - they give a squat, sedate nature. The advantage of Seclusion 2 house plan is a large dining room with access to the garden and a garage with additional space on the side. Laboratory has a version of the draft Seclusion 2 in mirror image. Seclusion 2 house is also available in a mirror version.

Rzuty:



Elewacje:

