

Dane techniczne:

Kubatura:	983 m ³
Powierzchnia zabudowy:	222.25 m ²
Powierzchnia całkowita:	309.82 m ²
Powierzchnia netto:	234.68 m ²
Powierzchnia użytkowa:	225.24 m ²
Wymiary domu:	17.99 x 13.96 m
Minimalne wymiary działki:	24.99 x 23.76 m
Wysokość do kalenicy:	7,90 m / 25,91 ft
Powierzchnia dachu:	356.4 m ²
Kąt nachylenia dachu:	35 degrees

Koszty realizacji:

Realizacja stanu surowego otwartego:	62 500
Realizacja stanu surowego zamkniętego:	90 500
Koszt robót wykończeniowych:	83 900
Realizacja domu pod klucz:	174 300

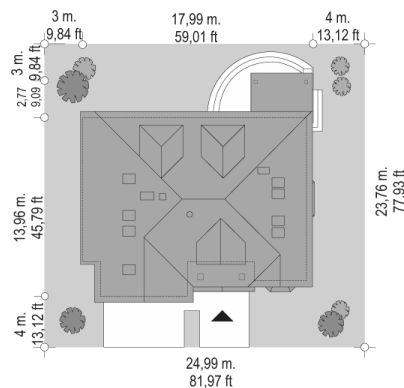
Koszty są podane w cenach netto, należy doliczyć podatek VAT

Materiały:

- Foundations - concrete bench and foundation walls with concrete blocks
- External walls - bilayer - porotherm blocks + polystyrene
- Internal walls - porotherm
- Ceiling - Teriva
- Roof - tile
- Elevation - thin-layer plaster



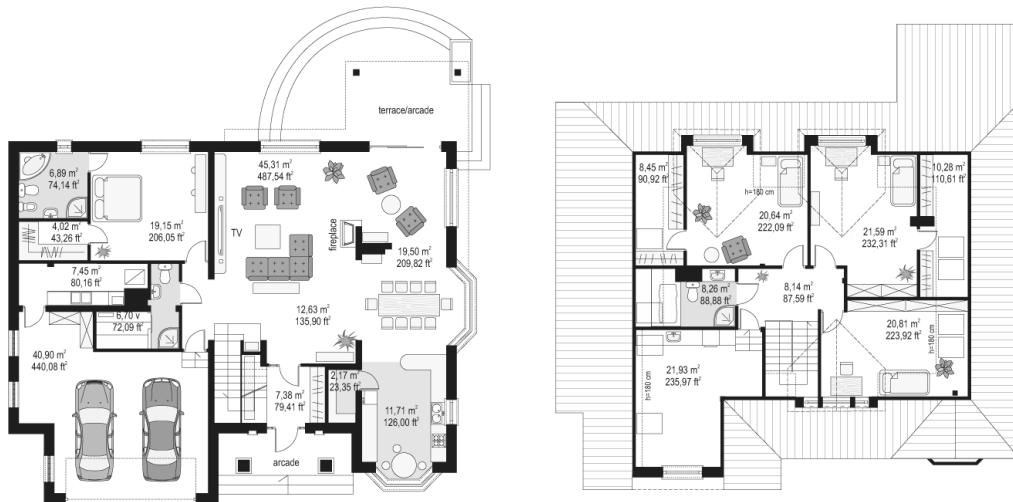
CENA PROJEKTU: 1110.00 \$



	Energy-saving package	bezpł.
	Ventilation and fireplace package	90
	Central vacuum package	70
	The electronic version of the project	120
	Solar installation package	70
	Underfloor heating package	80
	Heat pump package	70
	Water jacket package	70
	Boiler for solid fuel package	80
	Air conditioning package	80
	Fencing projects	140
	Septic tanks sealed package	bezpł.

Seclusion 3 is the next version of the popular house plan Seclusion. This variant version differs from the basic enlarged by the liquidation of arcades living room, a covered garden terrace was also added. In this project solid of garage was extended by pulling it toward the front of the house. It allows also to design additional rooms on the ground floor and enlarge the attic above the garage. Now he can also act an extra room. The interior of the house is divided on the ground floor with a vast living area, a parents' sleeping apartment, garage and technical rooms. On the attic there are three bedrooms and laundry. Seclusion 3 house is also available in a mirror version.

Rzuty:



Elewacje:

