

Dane techniczne:

Kubatura:	998 m ³
Powierzchnia zabudowy:	221.96 m ²
Powierzchnia całkowita:	366.04 m ²
Powierzchnia netto:	260.05 m ²
Powierzchnia użytkowa:	232.51 m ²
Wymiary domu:	21.65 x 12.38 m
Minimalne wymiary działki:	28.95 x 21.09 m
Wysokość do kalenicy:	8,58 m / 28,14 ft
Powierzchnia dachu:	362 m ²
Kąt nachylenia dachu:	36 i 38 degrees

Koszty realizacji:

Realizacja stanu surowego otwartego:	69 200
Realizacja stanu surowego zamkniętego:	99 900
Koszt robót wykończeniowych:	86 000
Realizacja domu pod klucz:	185 800

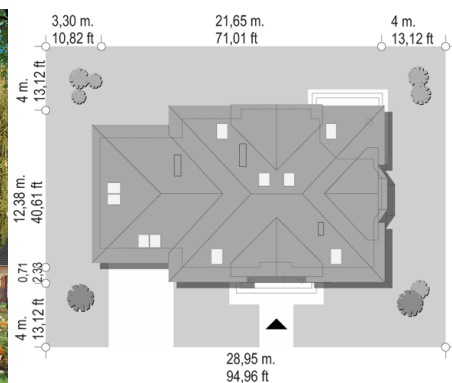
Koszty są podane w cenach netto, należy doliczyć podatek VAT

Materiały:

- Foundations - Concrete benches and walls of concrete blocks
- External walls - bilayer porotherm + wool
- Internal walls - porotherm
- Ceiling - Teriva
- Elevation - thin-layer plaster
- Roof - tile



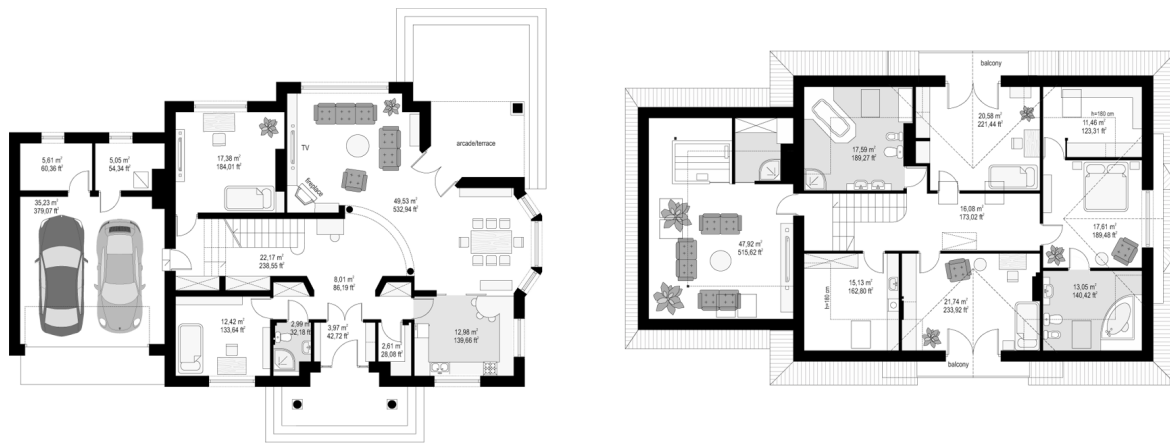
CENA PROJEKTU: 1110.00 \$



	Energy-saving package	bezpł.
	Ventilation and fireplace package	90
	Central vacuum package	70
	The electronic version of the project	120
	Solar installation package	70
	Underfloor heating package	80
	Heat pump package	70
	Water jacket package	70
	Boiler for solid fuel package	80
	Air conditioning package	80
	Fencing projects	140
	Septic tanks sealed package	bezpł.

Benedict 5 house plan is the next edition of the popular house plan Benedict. From the basic version of the Benedict 5 differs double garage, three dormer windows on the top floor, facing on each side of the building. Benedict 5 has additionally columned entrance with the little balcony, and a bay window in the dining room. In this house plan by increasing the garage part and transfer the boiler room an extra room on the ground floor has been obtained. In the attic, above the garage a large recreation part was designed. The attic is greater than in the basic version of the house plan, by increasing the height of the elbow walls. There is also a mirror version of the Benedict 5 house plan.

Rzuty:



Elewacje:

