

Dane techniczne:

Kubatura:	811 m ³
Powierzchnia zabudowy:	163.91 m ²
Powierzchnia całkowita:	280.55 m ²
Powierzchnia netto:	158.4 m ²
Powierzchnia użytkowa:	142.2 m ²
Wymiary domu:	18.75 x 10.01 m
Minimalne wymiary działki:	26.75 x 18.83 m
Wysokość do kalenicy:	7,87 m / 25,81 ft
Powierzchnia dachu:	262 m ²
Kąt nachylenia dachu:	38 degrees

Koszty realizacji:

Realizacja stanu surowego otwartego:	52 700
Realizacja stanu surowego zamkniętego:	73 900
Koszt robót wykończeniowych:	70 400
Realizacja domu pod klucz:	144 200

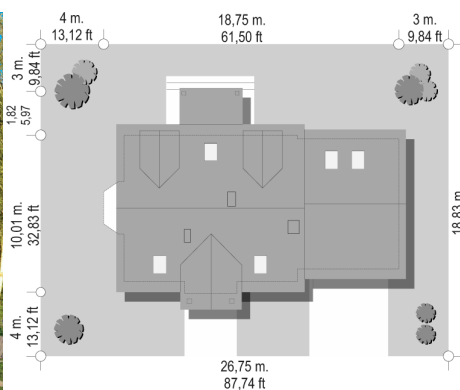
Koszty są podane w cenach netto, należy doliczyć podatek VAT

Materiały:

- Foundations - concrete bench and foundation walls with concrete blocks
- External walls - porotherm blocks + polystyrene
- Ceiling - Teriva
- Roof - tile
- Elevation - thin-layer plaster on polystyrene



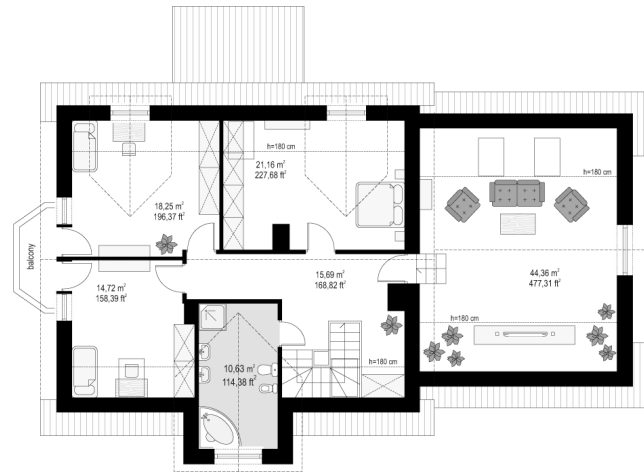
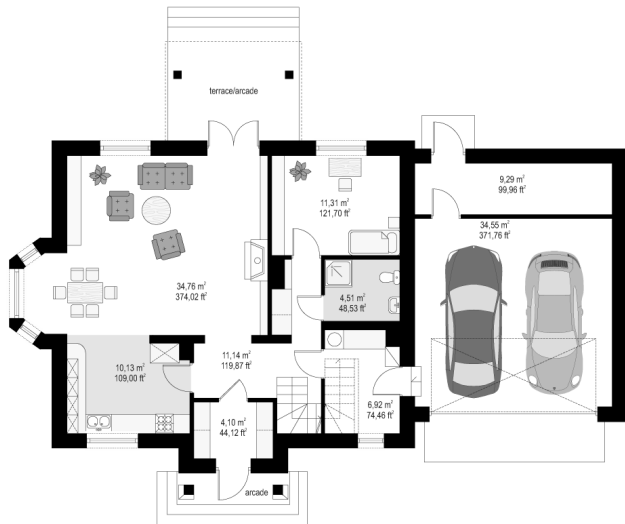
CENA PROJEKTU: 1040.00 \$



	Energy-saving package	bezpł.
	Ventilation and fireplace package	90
	Central vacuum package	70
	The electronic version of the project	120
	Solar installation package	70
	Underfloor heating package	80
	Heat pump package	70
	Water jacket package	70
	Boiler for solid fuel package	80
	Air conditioning package	80
	Fencing projects	140
	Septic tanks sealed package	bezpł.

Natty 5 is variant version of one of the most popular projects of our studio i.e. Natty house plan. This house plan has a garage for two cars and an extensive residential part. On the ground floor is designed living room with dining area, kitchen, and an additional room - a bedroom or office. In the attic there are three spacious bedrooms with en-suite bathrooms, and a large, universal room above the garage. By raising the elbow walls in the attic rooms are larger. Dormers allowed placement the windows in each room. The house is a reasonable proposition for a family of 4 to 6 people. You can also live in this house with your grandparents. Large garage with utility room is an additional advantage of this project. You can also order a mirror version of this house plan.

Rzuty:



Elewacje:

