

# 112.1 m<sup>2</sup>

# Natty with dormers

## Dane techniczne:

|                            |                              |
|----------------------------|------------------------------|
| Kubatura:                  | 516 m <sup>3</sup>           |
| Powierzchnia zabudowy:     | 118.73 m <sup>2</sup>        |
| Powierzchnia całkowita:    | 167.94 m <sup>2</sup>        |
| Powierzchnia netto:        | 135.68 m <sup>2</sup>        |
| Powierzchnia użytkowa:     | 112.1 m <sup>2</sup>         |
| Wymiary domu:              | 14.11 x 9.18 m               |
| Minimalne wymiary działki: | 22.11 x 17.18 m              |
| Wysokość do kalenicy:      | 7,20 m (7,60 m z podmurówką) |
| Powierzchnia dachu:        | 206.7 m <sup>2</sup>         |
| Kąt nachylenia dachu:      | 38 stopni                    |

## Koszty realizacji:

|  |         |
|--|---------|
| Realizacja stanu surowego otwartego:   | 37 500  |
| Realizacja stanu surowego zamkniętego: | 55 400  |
| Koszt robót wykończeniowych:           | 60 800  |
| Realizacja domu pod klucz:             | 116 200 |

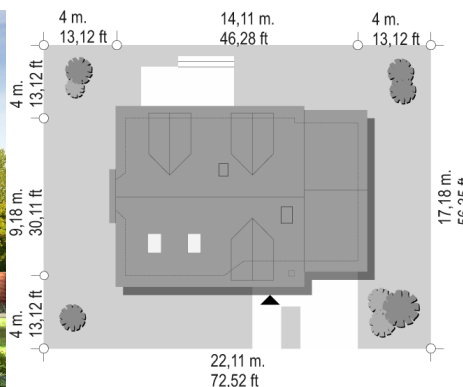
Koszty są podane w cenach netto, należy doliczyć podatek VAT

## Materiały:

- Foundations - poured concrete
- External walls - aerated concrete 24 cm + foamed polystyrene 12 cm
- Ceiling - Reinforced concrete Teriva
- Elevation - thin-layer acrylic plaster
- Roof - tile or metal roofing tile



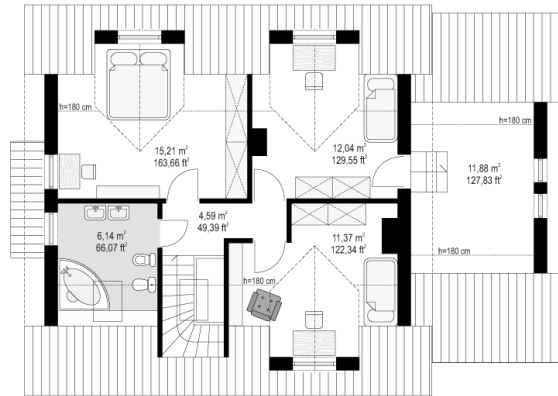
**CENA PROJEKTU: 970.00 \$**



|  |                                       |        |
|--|---------------------------------------|--------|
|  | Energy-saving package                 | bezpł. |
|  | Ventilation and fireplace package     | 90     |
|  | Central vacuum package                | 70     |
|  | The electronic version of the project | 120    |
|  | Solar installation package            | 70     |
|  | Underfloor heating package            | 80     |
|  | Heat pump package                     | 70     |
|  | Water jacket package                  | 70     |
|  | Boiler for solid fuel package         | 80     |
|  | Air conditioning package              | 80     |
|  | Fencing projects                      | 140    |
|  | Septic tanks sealed package           | bezpł. |

Natty with dormers is suitable for a family of four-five. It is a variant version of the Natty house plan. A simple gable roof is varied by large dormers on the front and back of the house. On the ground floor house apart from addition living room an extra room and bathroom was designed. On the attic there are three bedrooms, a large bathroom and loft above the garage. This house plan is characterized by a representative architecture and functional interiors. There is also available a version of this house plan.

## Rzuty:



## Elewacje:

