

Dane techniczne:

Kubatura:	412 m ³
Powierzchnia zabudowy:	90.25 m ²
Powierzchnia całkowita:	90.25 m ²
Powierzchnia netto:	74.66 m ²
Powierzchnia użytkowa:	70.48 m ²
Wymiary domu:	9.5 x 9.5 m
Minimalne wymiary działki:	17.5 x 17.5 m
Wysokość do kalenicy:	6,03 m / 19,78 ft
Powierzchnia dachu:	131.52 m ²
Kąt nachylenia dachu:	30 degrees

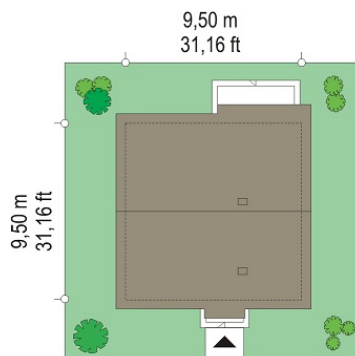
Koszty realizacji:

Realizacja stanu surowego otwartego:	15 300
Realizacja stanu surowego zamkniętego:	23 900
Koszt robót wykończeniowych:	28 500
Realizacja domu pod klucz:	52 300

Koszty są podane w cenach netto, należy doliczyć podatek VAT

Materiały:

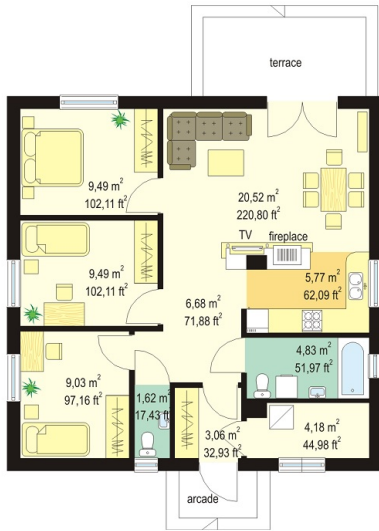
- Foundations - concrete bench and foundation walls with concrete blocks
- External walls - brick walls - silicate blocks + polystyrene + thin-layer plaster
- Ceiling - Wooden lattice trusses
- Elevation - thin-layer plaster on polystyrene
- Roof - tile

**CENA PROJEKTU: 970.00 \$**

	Energy-saving package	bezpł.
	Ventilation and fireplace package	90
	Central vacuum package	70
	The electronic version of the project	120
	Solar installation package	70
	Underfloor heating package	80
	Heat pump package	70
	Water jacket package	70
	Boiler for solid fuel package	80
	Air conditioning package	80
	Fencing projects	140
	Septic tanks sealed package	bezpł.

Sophie is a single-family bungalow for a family of four to five people. The building was built on a square plan 9,5x9,5 m, covered by a gable roof. The essence of this house plan is simplicity of solid in conjunction with a well-chosen proportions and an interesting detail. House is designed in two technologies - to choose from: traditional - brick or prefabricated - prefabricated imported from a factory and assembled on build place by crane. Depending on whether the investor decides to build a house Sophie on your own, or outsource the construction Mabudo company (www.mabudo.pl; (43) 823 41 41). Inside there are comfortable, four-room apartment with a technical background. Living room with central fireplace and television wall connected to the hall and kitchen gives a large undivided daily interior. Additionally, three bedrooms, bathroom and boiler room complete the interior. Sophie house is simple in structure, easy to build and is inexpensive in later use. We have also a mirror version of Sophie house plan.

Rzuty:



Elewacje:

