

## Dane techniczne:

Kubatura:	809 m <sup>3</sup>
Powierzchnia zabudowy:	177.08 m <sup>2</sup>
Powierzchnia całkowita:	279.34 m <sup>2</sup>
Powierzchnia netto:	192.52 m <sup>2</sup>
Powierzchnia użytkowa:	181.06 m <sup>2</sup>
Wymiary domu:	19.93 x 11.08 m
Minimalne wymiary działki:	23.93 x 19.08 m
Wysokość do kalenicy:	8,56 m / 28,08 ft
Powierzchnia dachu:	296.76 m <sup>2</sup>
Kąt nachylenia dachu:	38 degrees

## Koszty realizacji:

Realizacja stanu surowego otwartego:	55 700
Realizacja stanu surowego zamkniętego:	81 500
Koszt robót wykończeniowych:	77 000
Realizacja domu pod klucz:	158 500

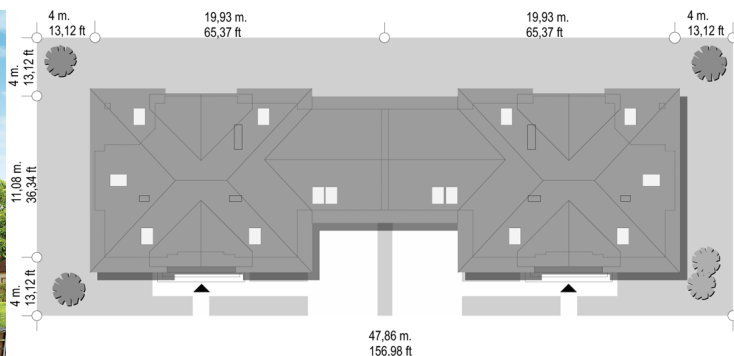
Koszty są podane w cenach netto, należy doliczyć podatek VAT

## Materiały:

- Foundations - poured concrete
- External walls - two porotherm 30 + 8 polystyrene (or wool)
- Ceiling - reinforced concrete TERIVA
- Elevation - thin-layer plaster on polystyrene
- Roof - ceramic tile or metal roofing tile

NOTE! The cost of implementation relate to half of house.

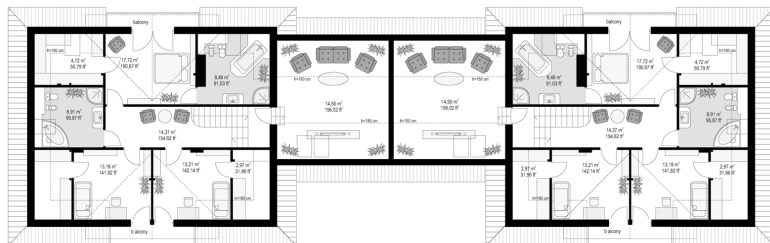
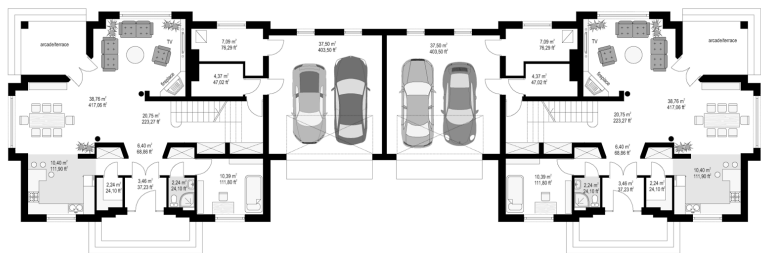
**CENA PROJEKTU: 1350.00 \$**



	Energy-saving package	bezpl.
	Ventilation and fireplace package	90
	Central vacuum package	70
	The electronic version of the project	120
	Solar installation package	70
	Underfloor heating package	80
	Heat pump package	70
	Water jacket package	70
	Boiler for solid fuel package	80
	Air conditioning package	80
	Fencing projects	140
	Septic tanks sealed package	bezpl.

Benedict semi-detached house is a variant version of Benedict house plan - this time as a semi-detached building. Two identical halves of house connected by the garages form a clear composition body. The house needs a fairly wide plot, but the end result will satisfy any investor. Benedict semi-detached is a typical house with an attic, with hip roofs and large wide dormer windows from the front and garden side. Inside of the house, on the ground floor there is a living and dining room open to hall and partly sheltered kitchen, and an extra room and a utility room with a garage. On the top floor provides there are three bedrooms and two bathrooms - including the parents apartment with its own bathroom and dressing-room. In this house plan over the garage, the attic which can be used for utility purposes: home cinema, sports room, or extra bedrooms was created. The house is an excellent choice for developers or individual investors who have a greater plot and want to build a semidetached house, they can sale the other half to earn some money.

Rzuty:



Elewacje:



MG Projekt Pracownia Architektoniczna s.c. ul. Uczniowska 14 03-112 Warszawa  
tel.: 22 676 66 83, 22 676 66 88, fax: 22 676 66 82, mob.: 600 392 884,  
tylko przedstawiciele 606 200 136, [www.mgprojekt.com.pl](http://www.mgprojekt.com.pl),  
[mgprojekt@mgprojekt.com.pl](mailto:mgprojekt@mgprojekt.com.pl)

MG Projekt