

Dane techniczne:

Kubatura:	714 m ³
Powierzchnia zabudowy:	191.84 m ²
Powierzchnia całkowita:	191.84 m ²
Powierzchnia netto:	121.29 m ²
Powierzchnia użytkowa:	116.79 m ²
Wymiary domu:	12.33 x 19.23 m
Minimalne wymiary działki:	20.03 x 27.23 m
Wysokość do kalenicy:	7,31 m / 23,98 ft
Powierzchnia dachu:	295.9 m ²
Kąt nachylenia dachu:	30 degree

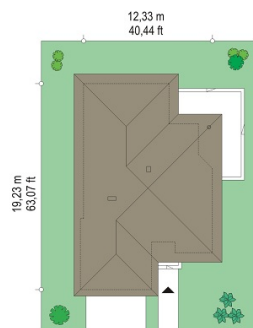
Koszty realizacji:

Realizacja stanu surowego otwartego:	46 900
Realizacja stanu surowego zamkniętego:	66 600
Koszt robót wykończeniowych:	55 700
Realizacja domu pod klucz:	122 300

Koszty są podane w cenach netto, należy doliczyć podatek VAT

Materiały:

- Foundations - Concrete benches and foundation walls of concrete blocks
- Exterior walls - brick walls - porotherm 25 blocks + polystyrene + thin-layer plaster
- Ceiling - TERIVA
- Elevation - thin-layer plaster on polystyrene
- Roof - tile

**CENA PROJEKTU: 1000.00 \$**

	Energy-saving package	bezpł.
	Ventilation and fireplace package	90
	Central vacuum package	70
	The electronic version of the project	120
	Solar installation package	70
	Underfloor heating package	80
	Heat pump package	70
	Water jacket package	70
	Boiler for solid fuel package	80
	Air conditioning package	80
	Fencing projects	140
	Septic tanks sealed package	bezpł.

Aphrodite is the family one storey house plans for four. This house has a rectangular shape, with incised terrace and partially protruding garage. The roof of the house has an envelope shape, which covers an extensive attic with dormers, such as the attic could serve as a room after adaptation. The architecture of the house pleases the eye by relevant proportions, the human scale of the building and careful detail finish. The house is rather dedicated to the narrow plot or to a plot having a garden on the side. The interior of the house is a single level ground floor, formed with the division into three parts: daily, nightly and utility part. A spacious living room with large glazed into terrace and garden, is combined with the lounge and kitchen. By the corridor separated by the television and fireplace wall you can pass to three bedrooms with dressing room and a bathroom. In turn, from the atrium you can get to a large garage and boiler room. If you want to have an additional room you can simply adapt the attic. The big advantage of this house is the possibility of phased finishing the interior, what allows to reduce the costs of building in the early stage. Aphrodite is also available in a mirror version.

Rzuty:



Elewacje:

