

Dane techniczne:

Kubatura:	359 m ³
Powierzchnia zabudowy:	82.94 m ²
Powierzchnia całkowita:	109.6 m ²
Powierzchnia netto:	63.03 m ²
Powierzchnia użytkowa:	58.98 m ²
Wymiary domu:	8.74 x 10.58 m
Minimalne wymiary działki:	17.58 x 16.74 m
Wysokość do kalenicy:	6,10 m / 20,00 ft
Powierzchnia dachu:	132.94 m ²
Kąt nachylenia dachu:	30 degrees

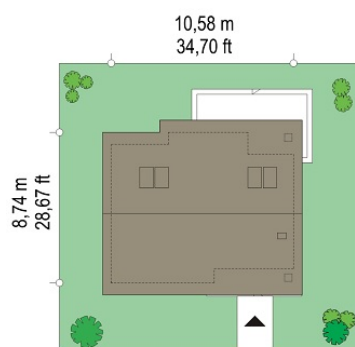
Koszty realizacji:

Realizacja stanu surowego otwartego:	25 700
Realizacja stanu surowego zamkniętego:	36 200
Koszt robót wykończeniowych:	31 100
Realizacja domu pod klucz:	67 200

Koszty są podane w cenach netto, należy doliczyć podatek VAT

Materiały:

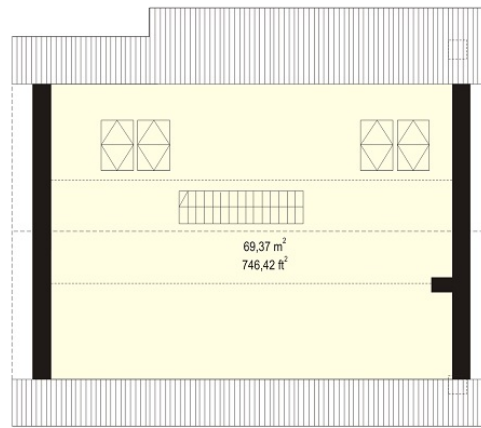
- Foundations - Concrete benches and foundation walls of concrete blocks
- Walls - brick walls - porotherm 25 blocks + polystyrene + thin-layer plaster
- Ceiling - Teriva
- Elevation - thin-layer plaster on polystyrene
- Roof - tile

**CENA PROJEKTU: 830.00 \$**

	Energy-saving package	bezpł.
	Ventilation and fireplace package	90
	Central vacuum package	70
	The electronic version of the project	120
	Solar installation package	70
	Underfloor heating package	80
	Heat pump package	70
	Water jacket package	70
	Boiler for solid fuel package	80
	Air conditioning package	80
	Fencing projects	140
	Septic tanks sealed package	bezpł.

Boniface house plan is a small, family semi-detached house for the family of 3-4 people. The house is covered with a gable roof. Above the ground floor not usable attic was designed, which can be easily adapted to the attic with additional rooms. Boniface house plan, thanks to a simple block is easy and inexpensive to build. Nicely accented input platform, fragments of walls with wooden elevation and clinker tiles, an arcade and a garden terrace with a lovely corner window of the living room - all these elements make that we look to the house with pleasure. In the interior three rooms - two bedrooms and a living room, connected to the lobby and a kitchen with dining area were designed. There are also additional rooms, the boiler room available from the porch and bathroom. The attic, for which we enter by stairs from the lobby can be adapted to the usable attic, or it can be at all close by eliminating a staircase. There is also a mirror version of the Boniface house plan.

Rzuty:



Elewacje:

